

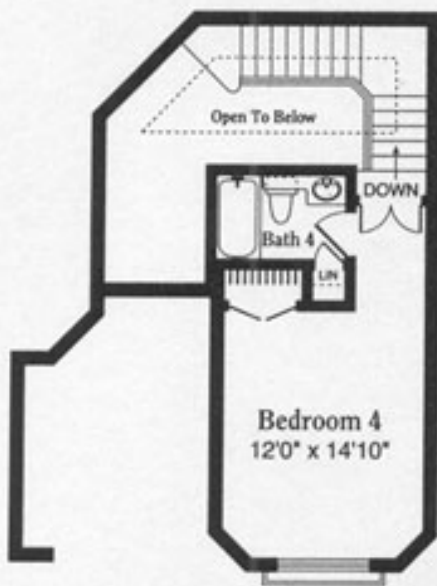
# The Bardini

Living Area A/C	2,957 sq. ft.*
Garage	556 sq. ft.
Covered Entry	36 sq. ft.
Covered Patio	269 sq. ft.

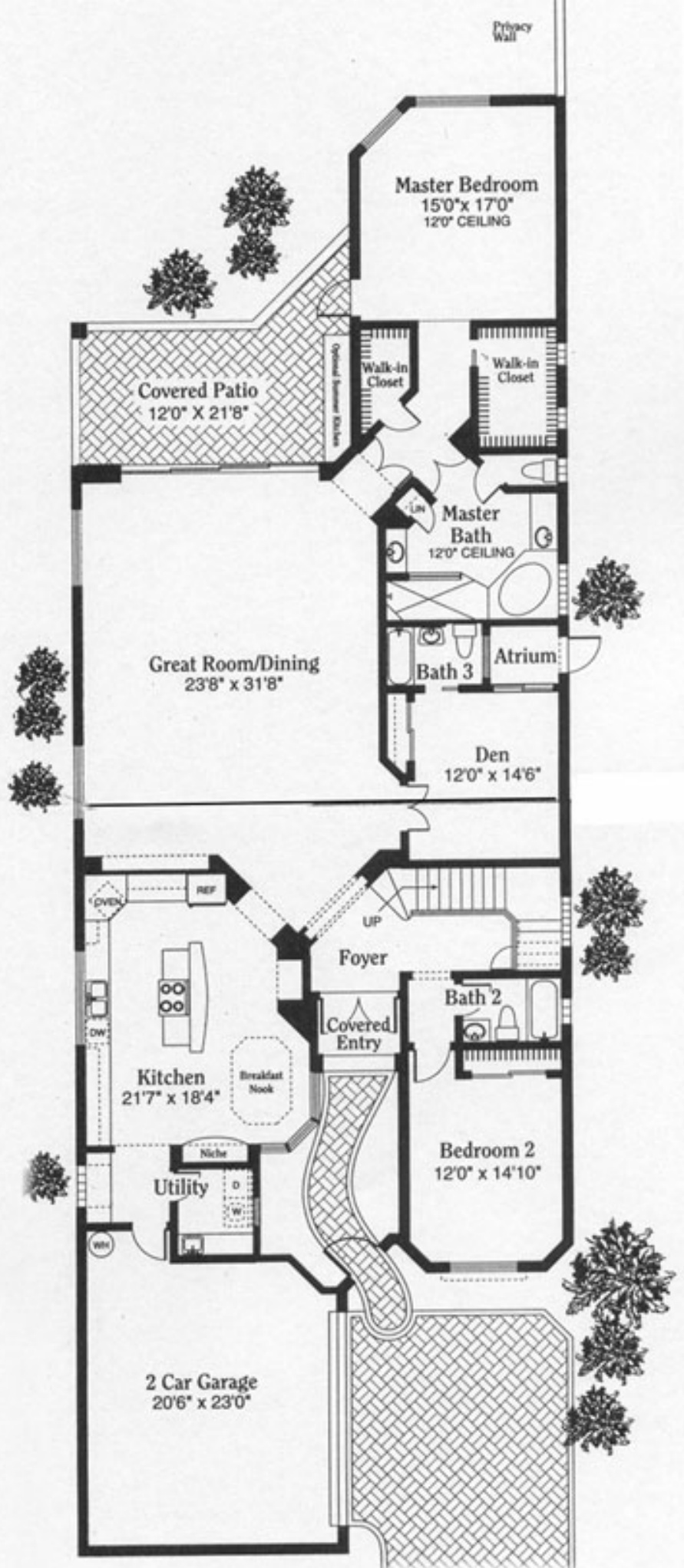
Total First Floor  
Under Roof 3,818 sq. ft.

Optional Second Floor  
Living Area A/C 335 sq. ft.

Total A/C Area 3,292 sq. ft.  
Total Under Roof 4,153 sq. ft.



Optional Second Floor



\*Includes expanded foyer and staircase which would be altered for single-story Bardini floorplan.