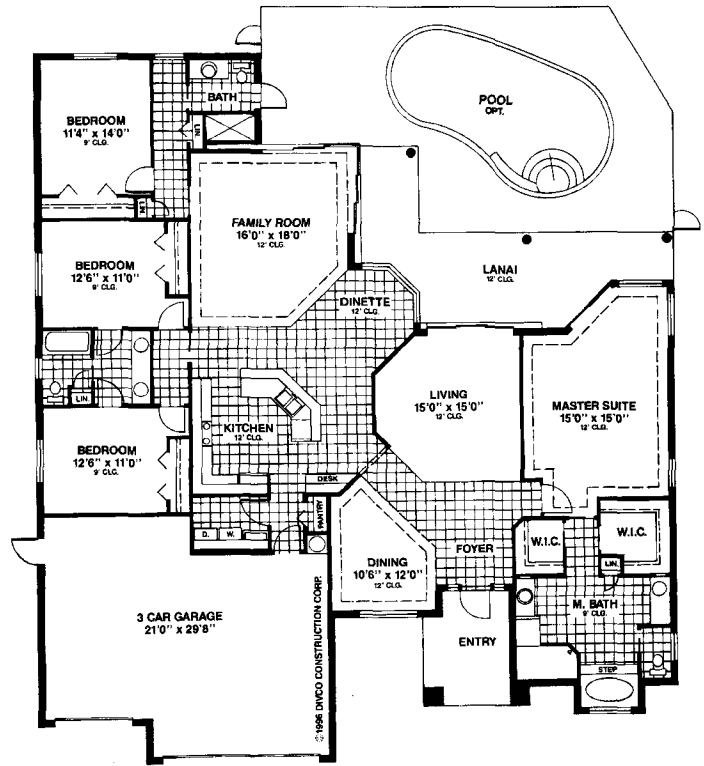


WILSHIRE

The Wilshire by Divco Construction Corp. offers 2,766 square feet of air-conditioned space. It is a four bedroom/three bath house with 12' ceilings in the main rooms. Many of the ceilings feature additional ceiling details, including a lighted cove ceiling. The master bath has a Jacuzzi whirlpool tub, walk-in shower and separate his and her vanities and closets.

The kitchen features upgraded wood cabinets with a unique crown molding and Corian tops. With the family room corner sliding doors open, there is an uninterrupted view to the pool from most of the room. Including the garage and covered lanai, there is a total of 3,938 square feet.

For over 17 years, Divco Construction Corp. has been building homes in the most prestigious communities in Southwest Florida. They are a professionally run organization with the experience, talent, expertise, and commitment to have built over 375 homes. Their dedication to building homes of thoughtful design, competitive pricing and quality construction has set the standard for new home construction in Southwest Florida. See The Wilshire at the 1997 Parade of Homes and discover the *Divco Difference*.



**Divco
Construction
Corp.**
CUSTOM HOME DIVISION