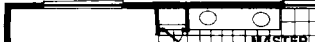


from \$173,000



Eagle creek
The Natural Club Selection

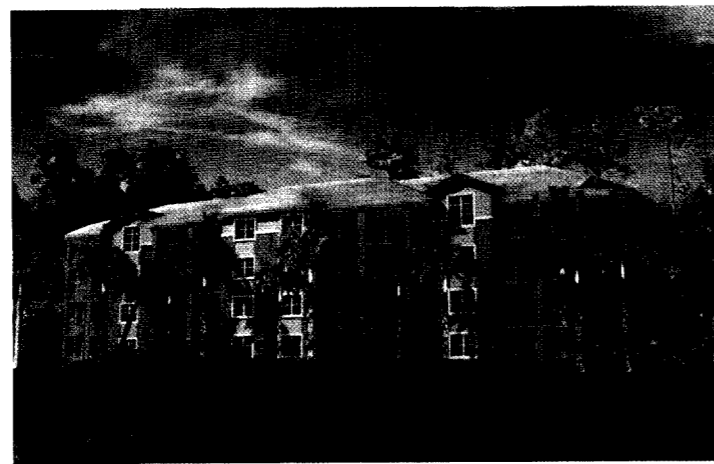


If this is where you want to be, it's time to make your move.



Final Phase!

Reserve now for pre-construction prices.



Come and get a sneak preview of Eagle Creek's final phase, the sumptuous low-rise condominiums of Waterford Place. We've truly saved the best for last!

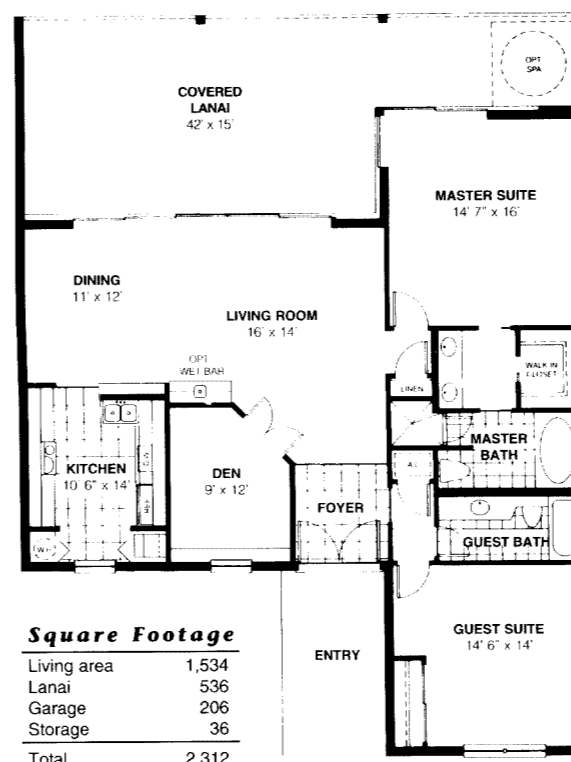
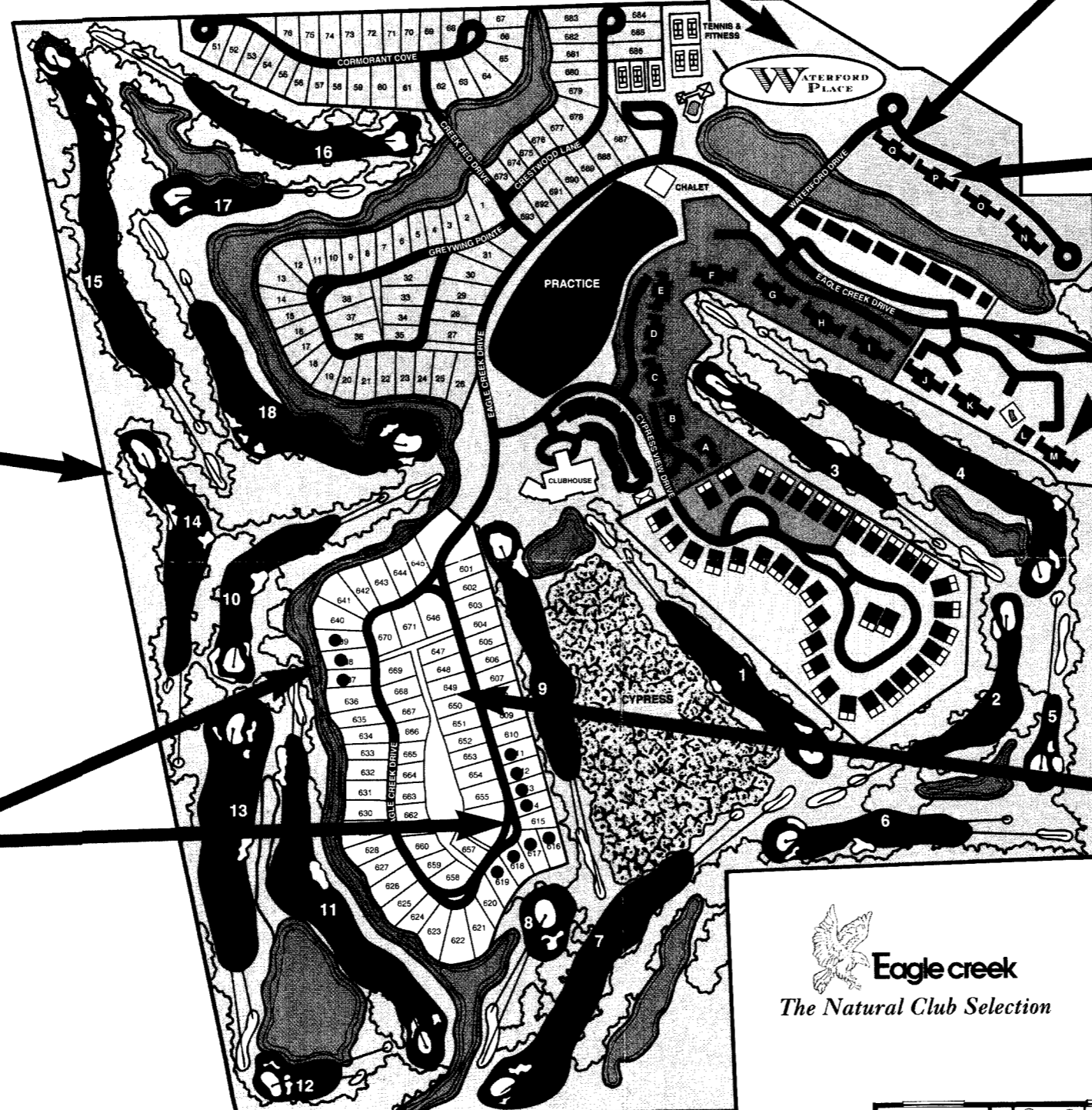


The living rooms in Waterford Place are spacious and inviting, and even more so when you open the sliding doors all the way.



Waterford Place homes include a comfortable eat in kitchen and a private den.

At Eagle Creek, the golf course isn't dominated by the real estate - no hole has homes on both sides, and only seven holes are bordered by homes.



Square Footage

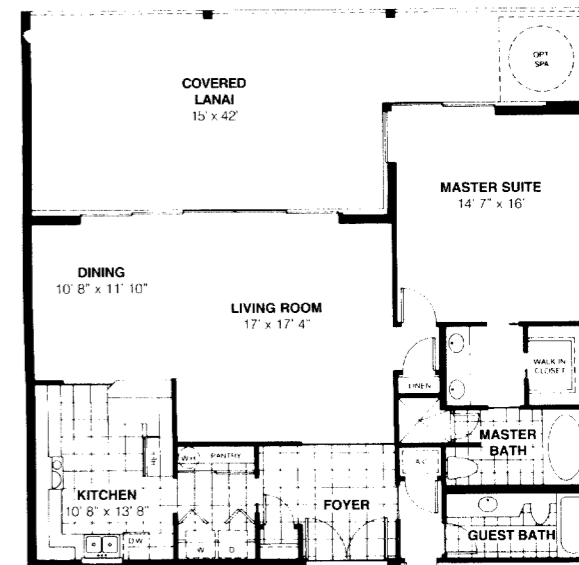
Living area	1,534
Lanai	536
Garage	206
Storage	36
Total	2,312

The Sandpiper

Two Bedroom + Den/Two Bath
from \$173,000

GARDEN APARTMENT CONDOMINIUMS

All our Garden Apartments have 42-foot wide lanais and private enclosed garages, with your choice between the water views of Crystal Lake or the golf course views of Stonegate Village. Tour the models and choose your view today!



Square Footage

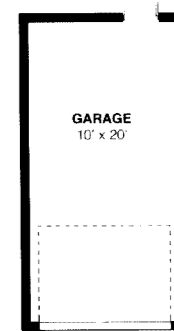
Living area	1,534
Lanai	536
Garage	206
Storage	36
Total	2,312

The Kittiwake

Two Bedroom/Two Bath
from \$186,000

GARAGE INCLUDED

Whichever model you choose, your Garden Apartment condominium at Eagle Creek includes a private enclosed garage with remote door opener (plus a private storage room).



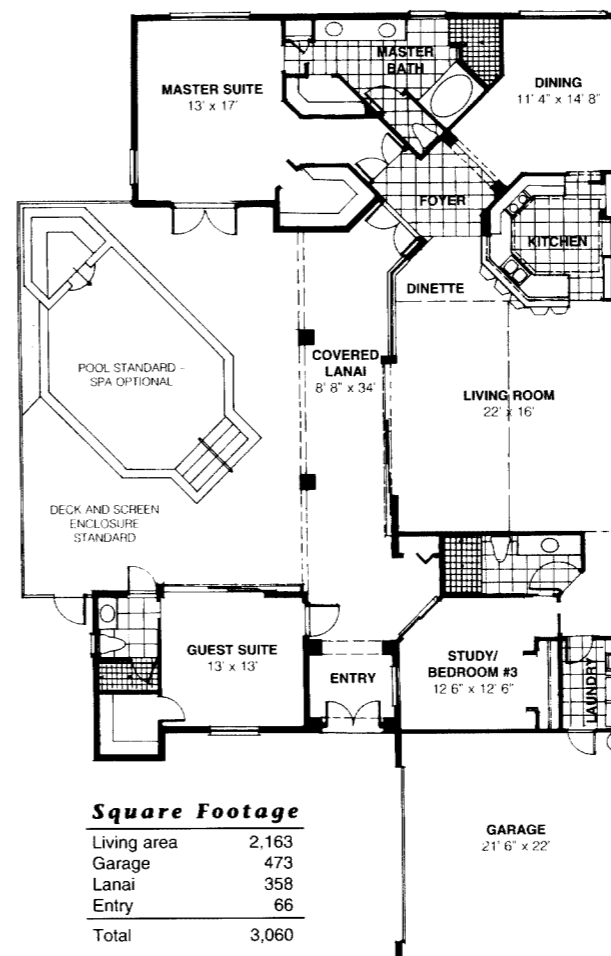
SINGLE FAMILY HOMES

Only a few golf course homesites remain at Eagle Creek, and they are disappearing fast. Don't put off your decision, or the site you want may be gone! Red dots show available golf course homesites.

COURT YARD HOMES

In Eagle Creek's single family Courtyard Homes, the home wraps around a central courtyard - and the pool and screen enclosure are included in the price!

Eagle Creek
The Natural Club Selection



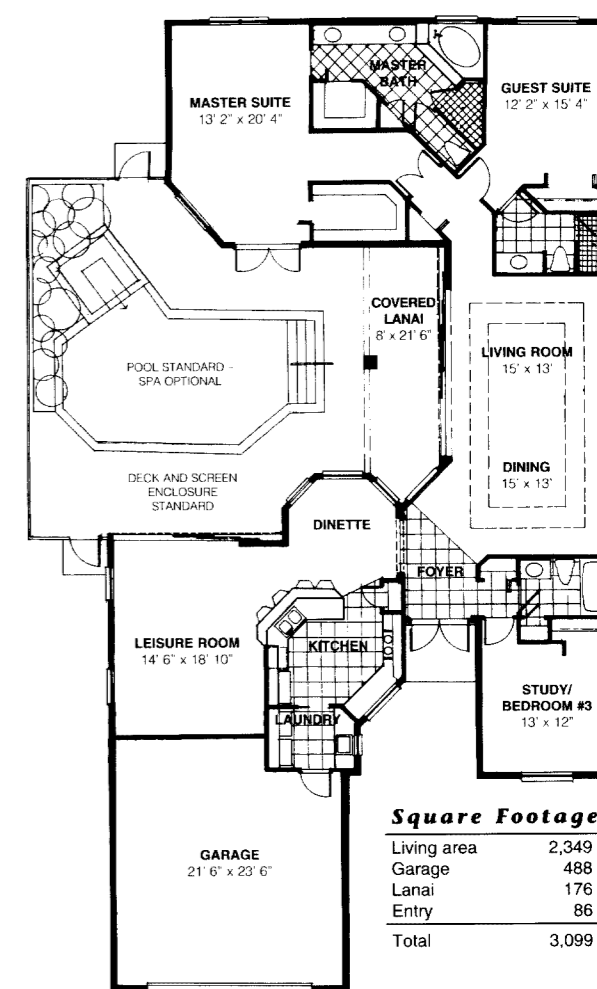
Square Footage

Living area	2,163
Garage	473
Lanai	358
Entry	66
Total	3,060

The Aruba

Three Bedroom/Three Bath

from \$326,000
includes homesite and pool



Square Footage

Living area	2,349
Garage	488
Lanai	176
Entry	66
Total	3,099

The Bonaire

Three Bedroom/Three Bath

from \$355,000
includes homesite and pool



CGC 015674



To build your Eagle Creek home, choose the builder who knows Eagle Creek best - Eagle Creek Properties Construction Division. From 2,000 square feet to over 6,000, we will customize a floorplan or design an original for you.

