



.....





The Lutgert Companies' history of achievement in Southwest Florida began more than 30 years ago with the creation of Park Shore in Naples.

Over the years, The Lutgert Companies' has developed Collier County's most prestigious commercial and residential projects, among them The Village on Venetian Bay, the Northern

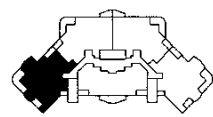
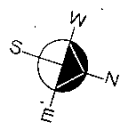
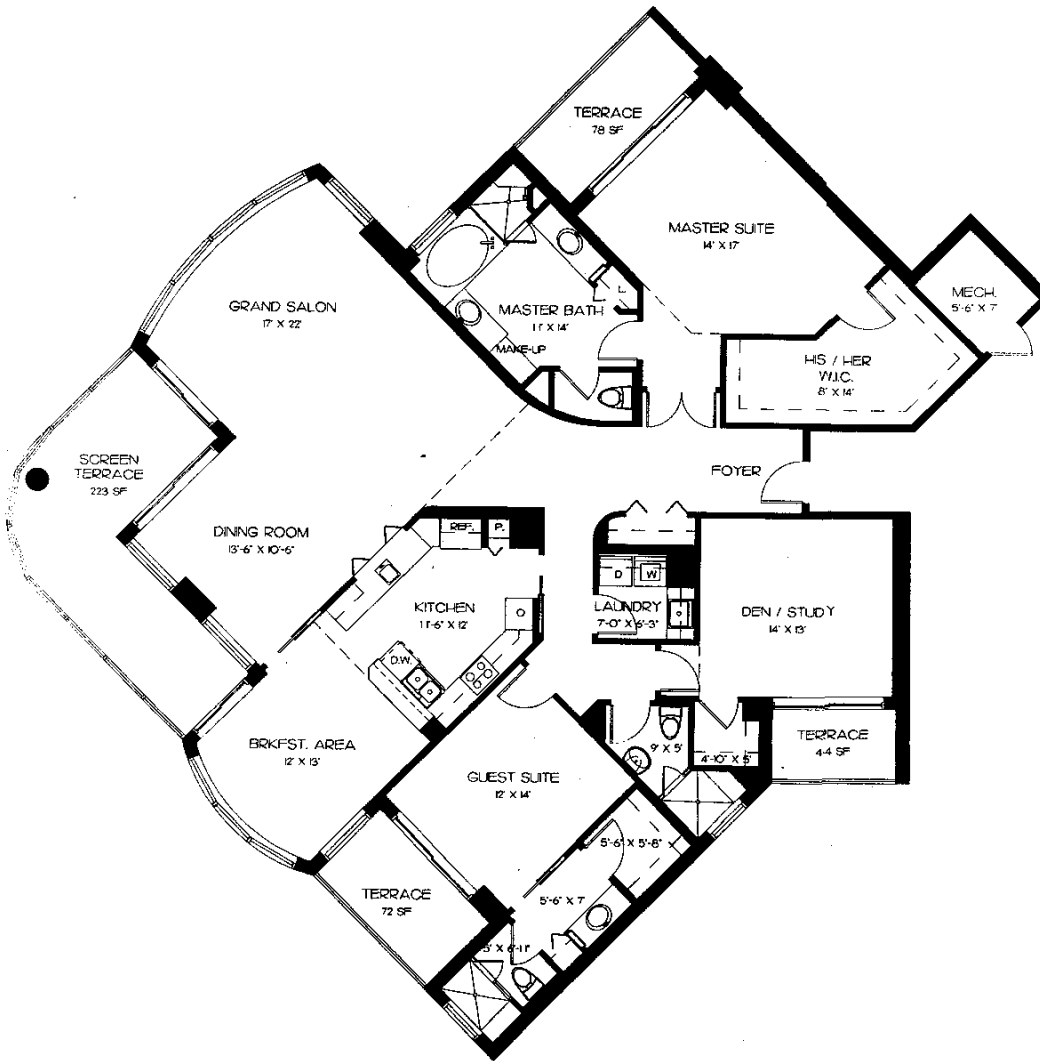
LUTGERT COMPANIES

Trust Building as well as 14 luxury beachfront condominium projects. Commitment to creative design and meticulous craftsmanship has earned them the confidence of clients.

The Lutgert Companies added to its solid reputation with the creation of Linville Ridge, a golf course community in the mountains of North Carolina. Its environmentally sensitive design has won numerous awards and received national acclaim.



Vision, innovation, commitment to excellence - hallmark of The Lutgert Companies.

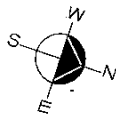
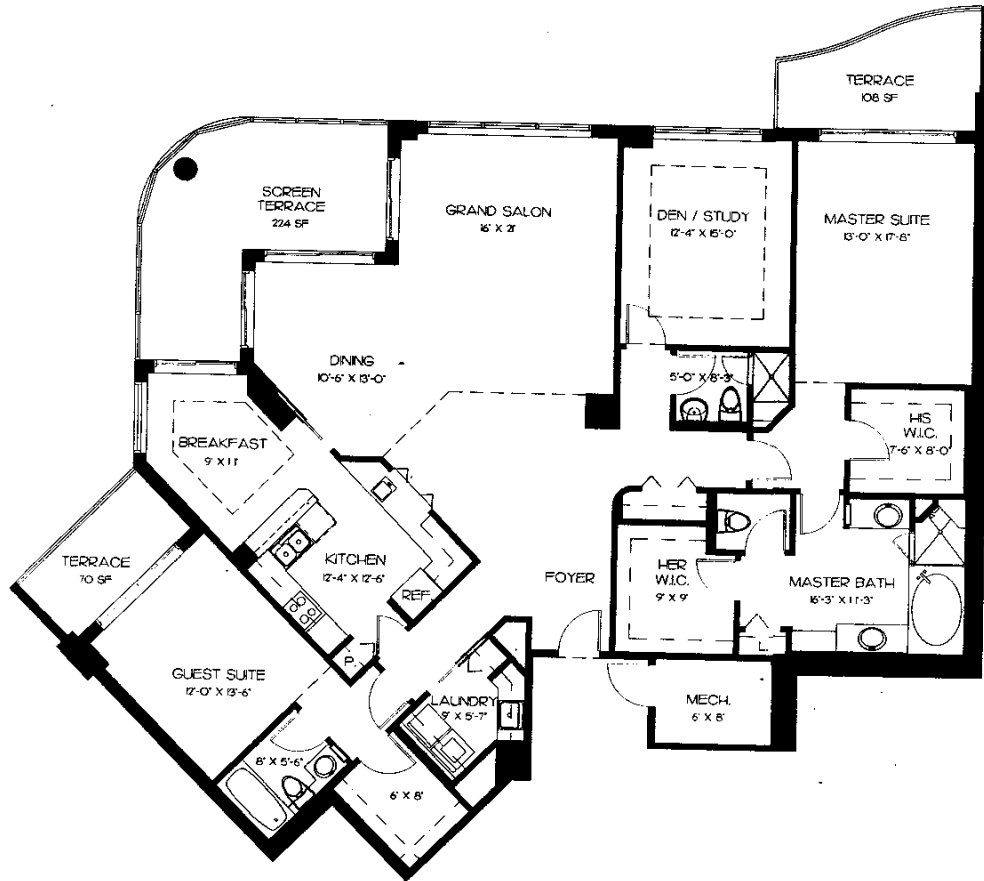


KEY PLAN

RESIDENCE ONE

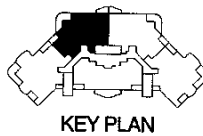
3 BEDROOMS / 3 BATHS
 LIVING AREA 2,616 SQ. FT.
 TERRACES 415 SQ. FT.
 TOTAL AREA 3,031 SQ. FT.

ALL DIMENSIONS ARE APPROXIMATE AND SUBJECT TO CHANGE WITHOUT NOTICE.

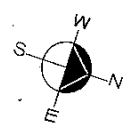
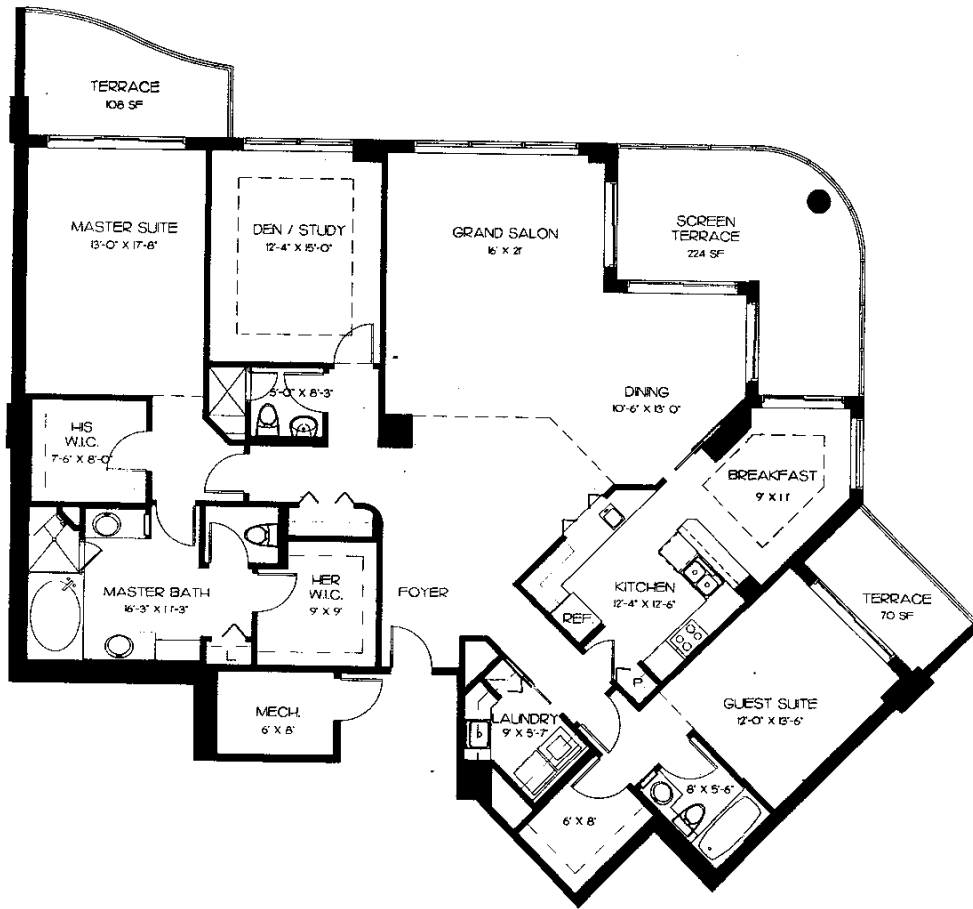


RESIDENCE TWO

3 BEDROOMS / 3 BATHS
 LIVING AREA 2,519 SQ. FT.
 TERRACES 402 SQ. FT.
 TOTAL AREA 2,921 SQ. FT.

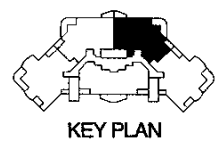


ALL DIMENSIONS ARE APPROXIMATE AND SUBJECT TO CHANGE WITHOUT NOTICE.



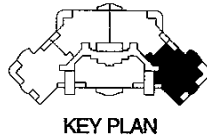
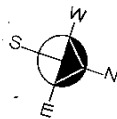
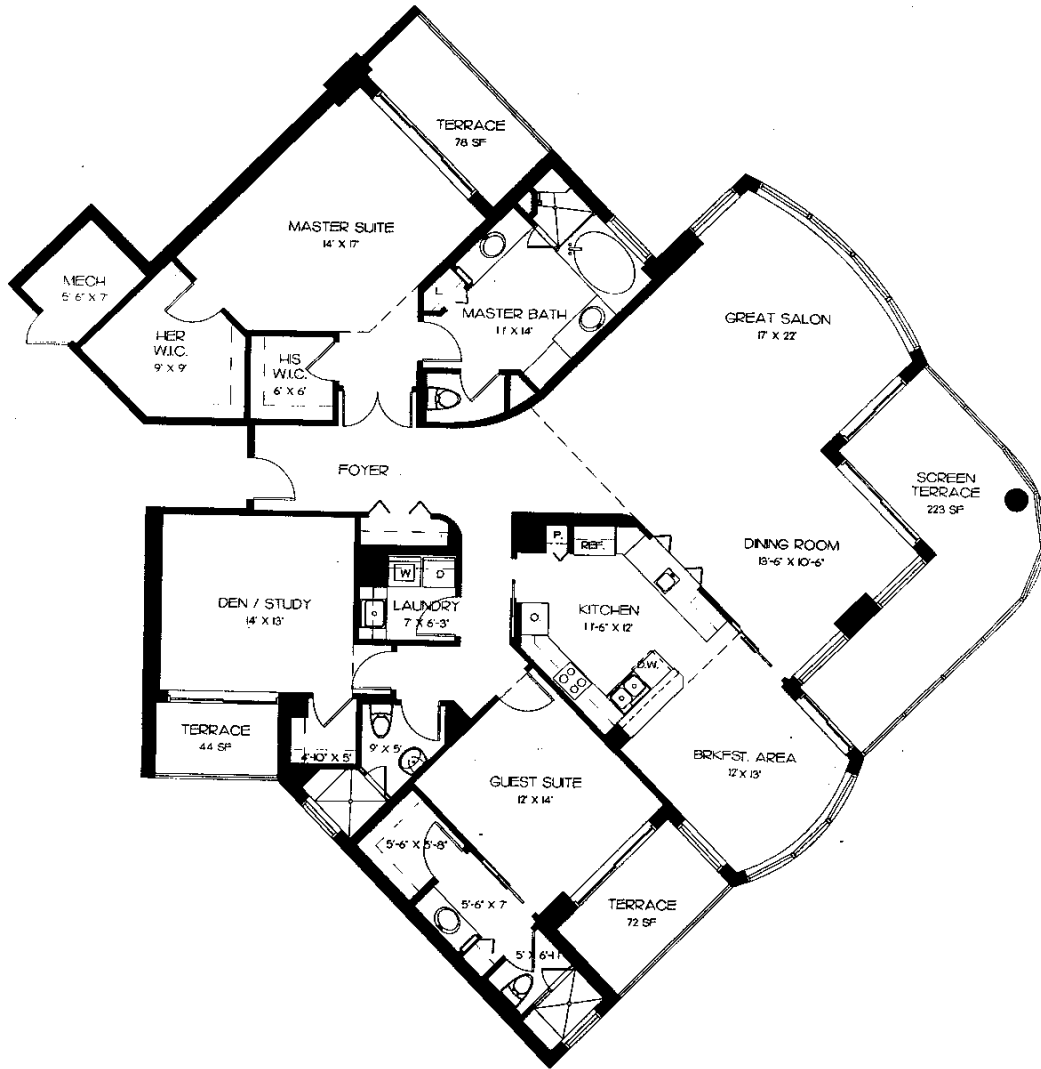
RESIDENCE THREE

3 BEDROOMS / 3 BATHS
 LIVING AREA 2,519 SQ. FT.
 TERRACES 402 SQ. FT.
 TOTAL AREA 2,921 SQ. FT.



ALL DIMENSIONS ARE APPROXIMATE AND SUBJECT TO CHANGE WITHOUT NOTICE.

11



RESIDENCE FOUR

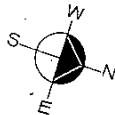
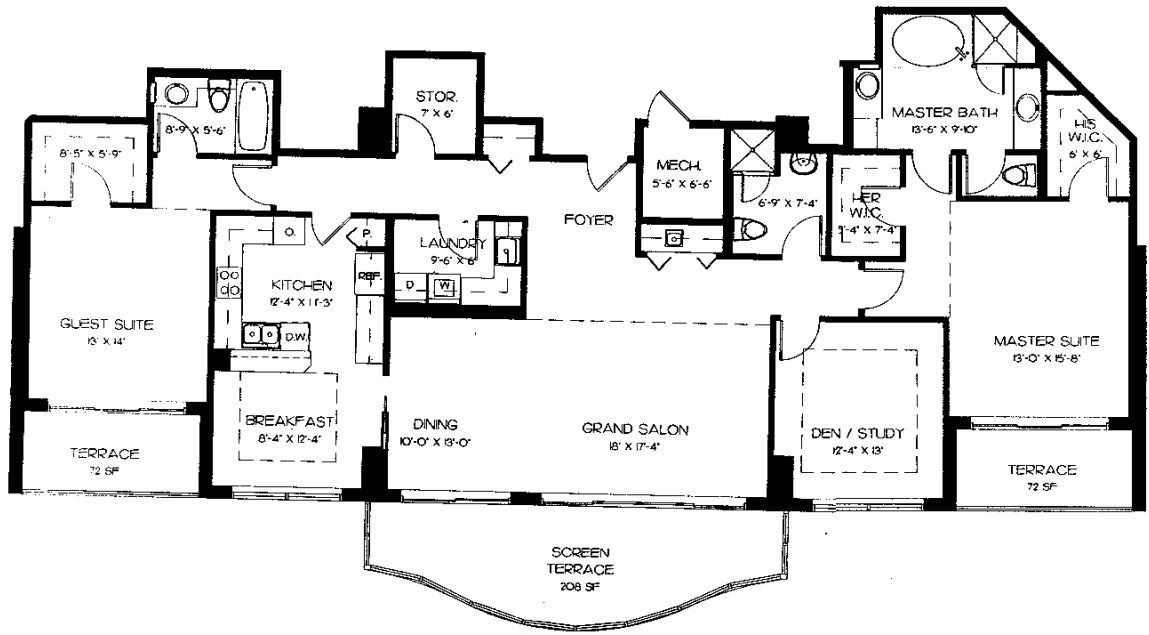
3 BEDROOMS / 3 BATHS

LIVING AREA 2,616 SQ. FT.

TERRACES 415 SQ. FT.

TOTAL AREA 3,031 SQ. FT.

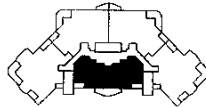
ALL DIMENSIONS ARE APPROXIMATE AND SUBJECT TO CHANGE WITHOUT NOTICE.



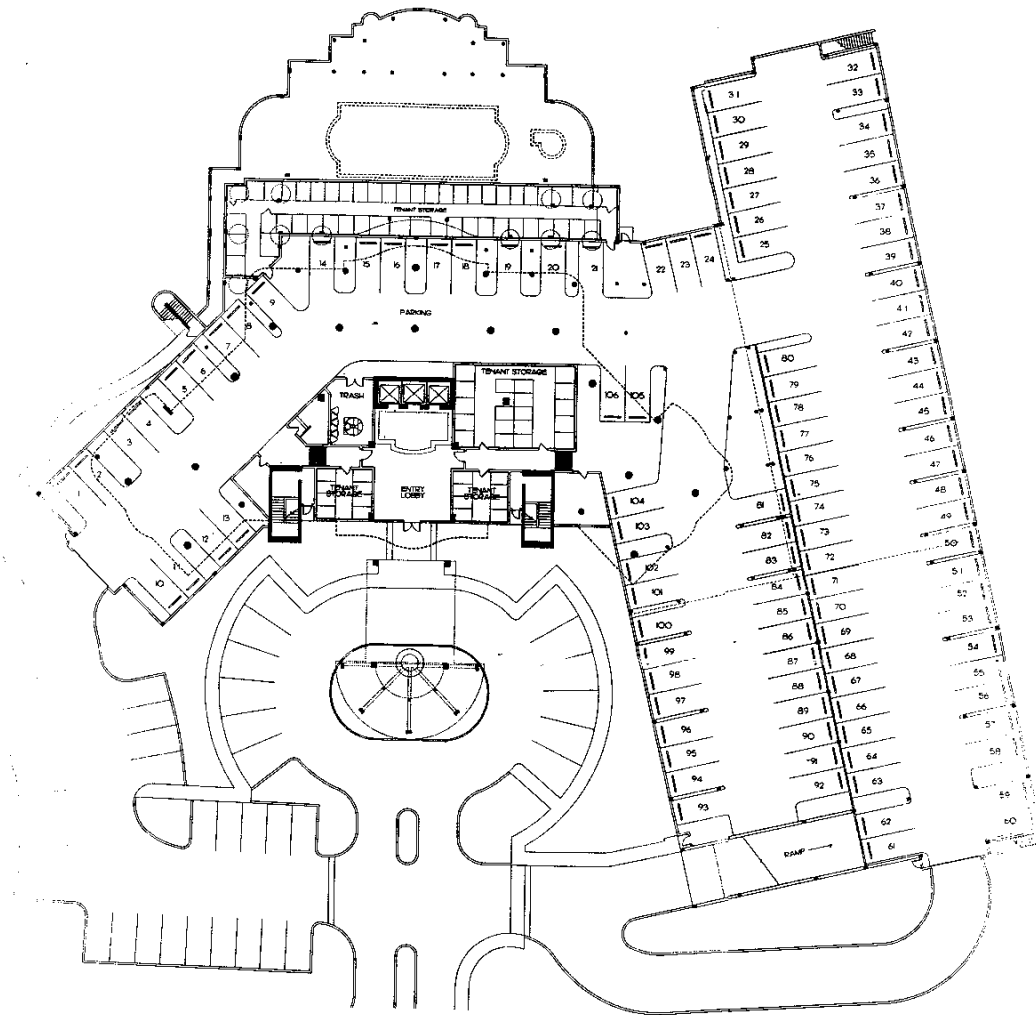
RESIDENCE FIVE

3 BEDROOMS / 3 BATHS
 LIVING AREA 2,245 SQ. FT.
 TERRACES 355 SQ. FT.
 TOTAL AREA 2,600 SQ. FT.

ALL DIMENSIONS ARE APPROXIMATE AND SUBJECT TO CHANGE WITHOUT NOTICE.



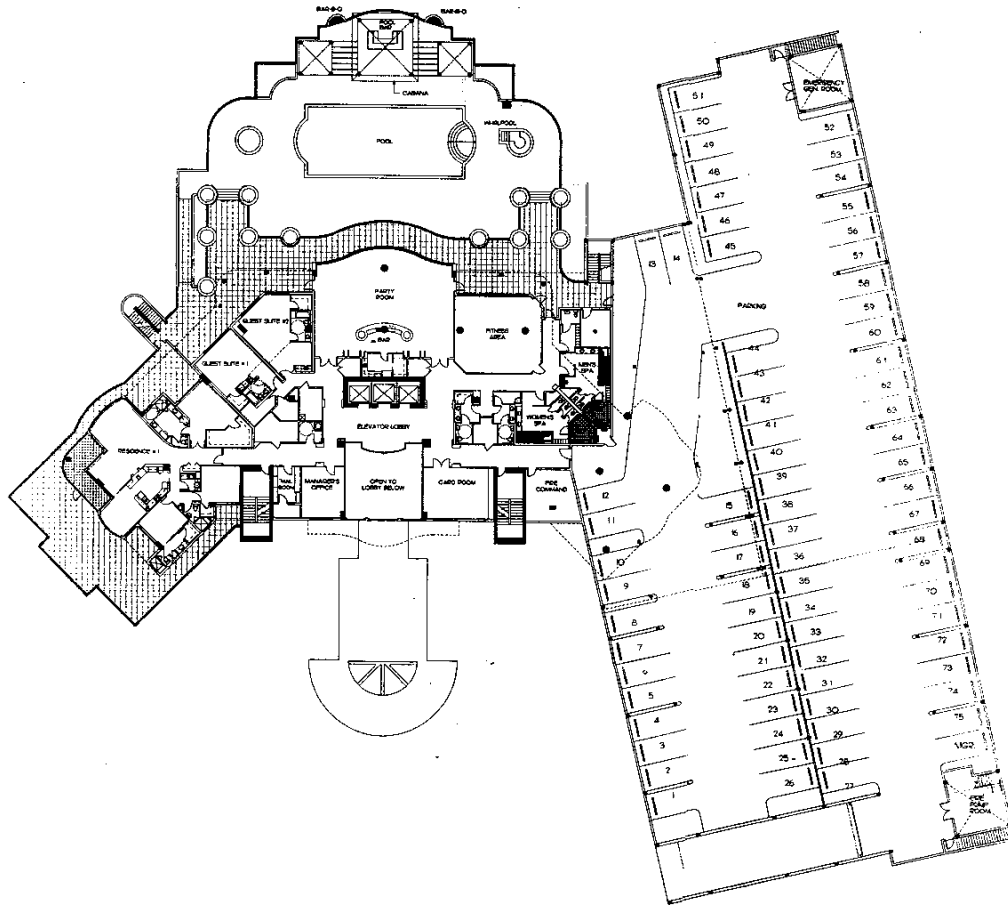
KEY PLAN



**FIRST FLOOR
PARKING & COMMONS**

- ENTRY LOBBY • STORAGE AREA
- MAIN ENTRY PORTE COCHERE
- GRAND MAIN LOBBY
- CONTROLLED ACCESS PARKING
- BIKE STORAGE

ALL DIMENSIONS ARE APPROXIMATE AND SUBJECT TO CHANGE WITHOUT NOTICE.

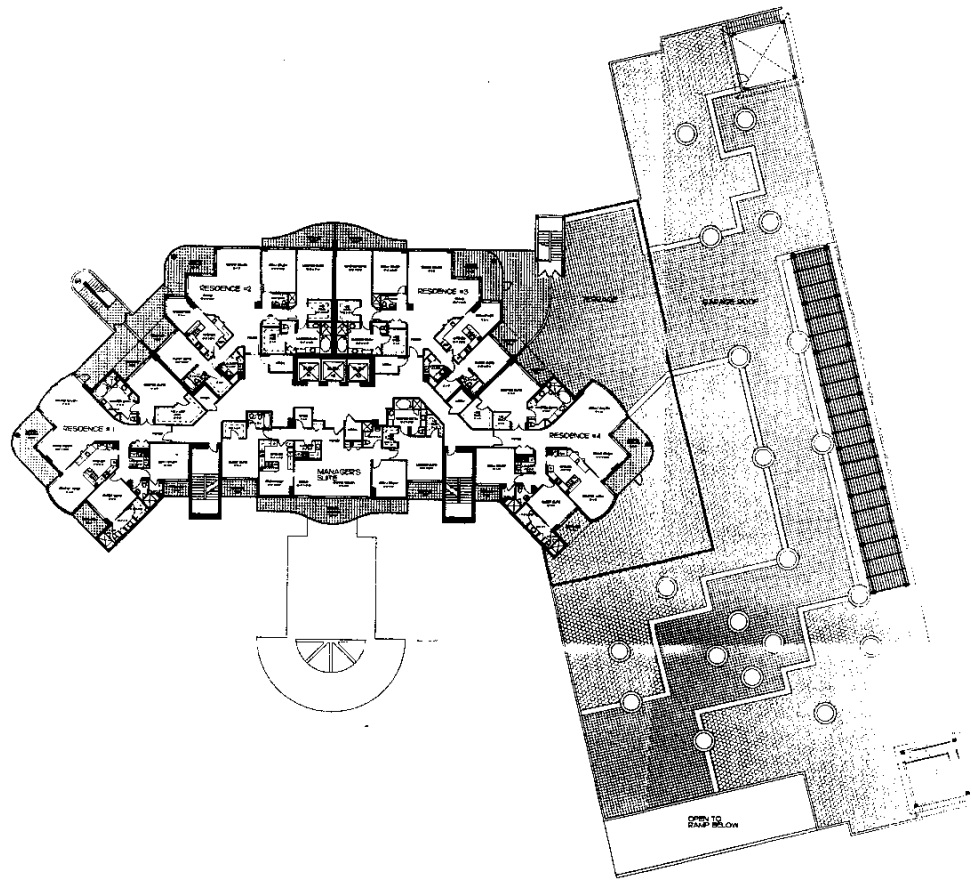


**SECOND FLOOR
PARKING & COMMONS**

(#201 Residence on this floor)

- RESIDENCE 1 • GUEST SUITES • MANAGER'S OFFICE • CARD ROOM • PARTY ROOM • BAR
- FITNESS AREA • MEN'S & WOMEN'S SPAS
- POOL • WHIRLPOOL • POOL BAR

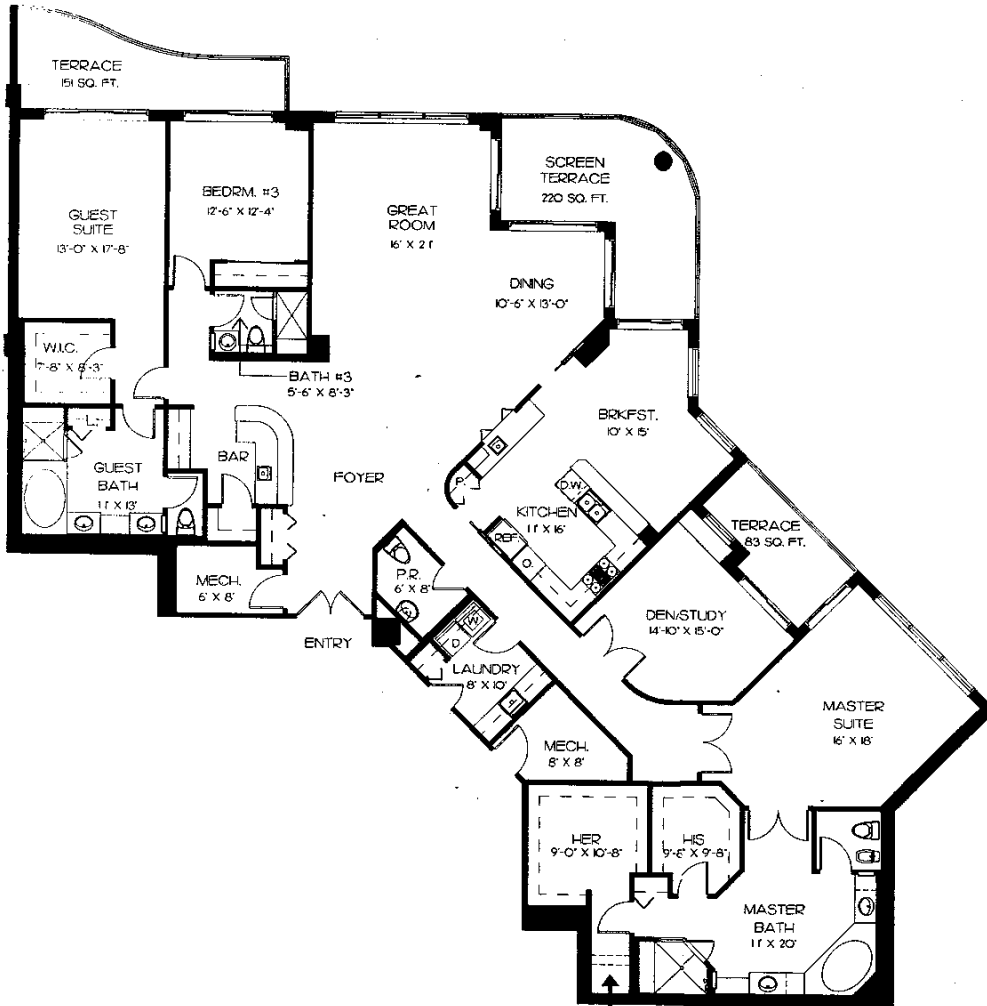
ALL DIMENSIONS ARE APPROXIMATE AND SUBJECT TO CHANGE WITHOUT NOTICE.



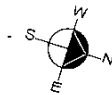
**THIRD FLOOR &
HARDSCAPE LEVEL**

- RESIDENCES 1 THROUGH 4
- MANAGERS SUITE

ALL DIMENSIONS ARE APPROXIMATE AND SUBJECT TO CHANGE WITHOUT NOTICE.



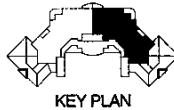
CLOSET SPACE REDUCED BY 12 SQ. FT.
AT FIRST LEVEL PENTHOUSE.

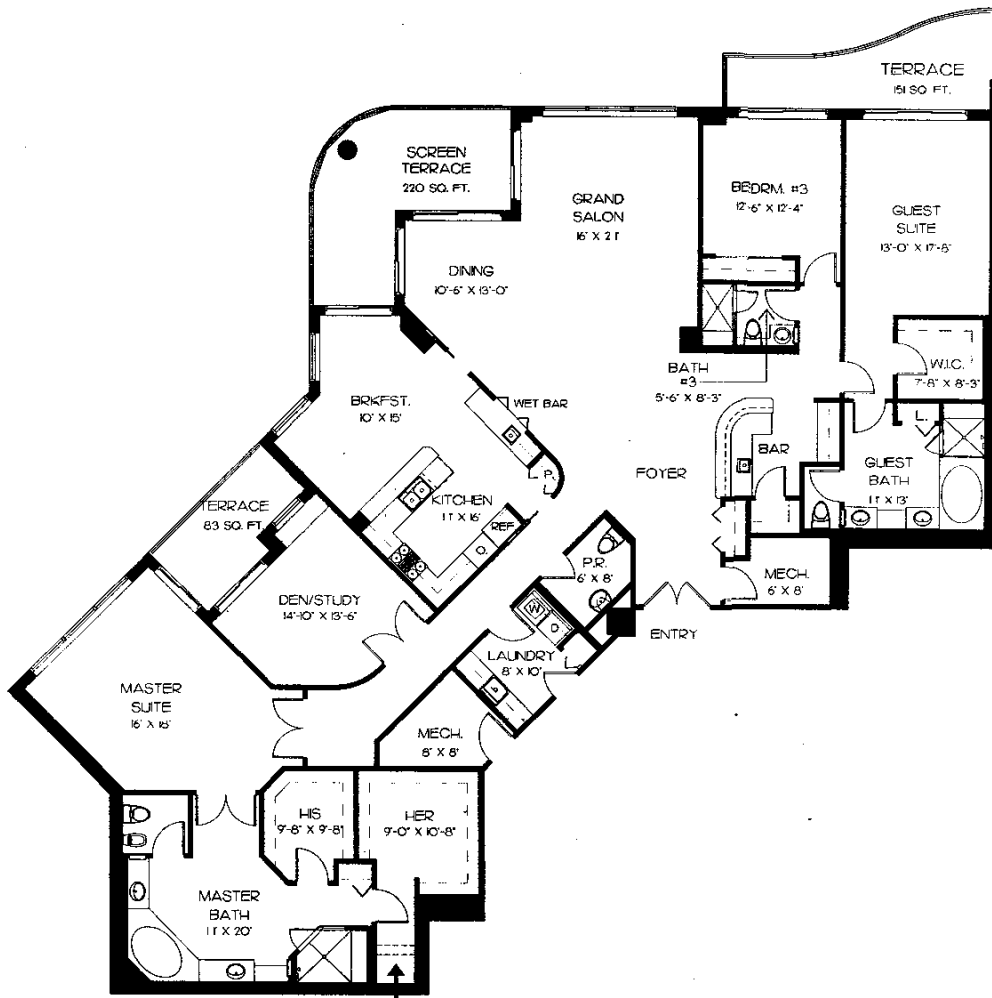


PENTHOUSE NORTH

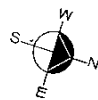
3 BEDROOMS + DEN / 3.5 BATHS
 LIVING AREA 3,828 SQ. FT.
 TERRACES 454 SQ. FT.
 TOTAL AREA 4,282 SQ. FT.

ALL DIMENSIONS ARE APPROXIMATE AND SUBJECT TO CHANGE WITHOUT NOTICE.





CLOSET SPACE REDUCED BY 12 SQ. FT. AT FIRST LEVEL PENTHOUSE.



PENTHOUSE SOUTH

3 BEDROOMS + DEN / 3.5 BATHS

LIVING AREA 3,828 SQ. FT.

TERRACES 454 SQ. FT.

TOTAL AREA 4,282 SQ. FT.

ALL DIMENSIONS ARE APPROXIMATE AND SUBJECT TO CHANGE WITHOUT NOTICE.