

---

VILLAGE GREENS OF LELLY  
AN EXCLUSIVE DEVELOPMENT OF VILLA HOMES

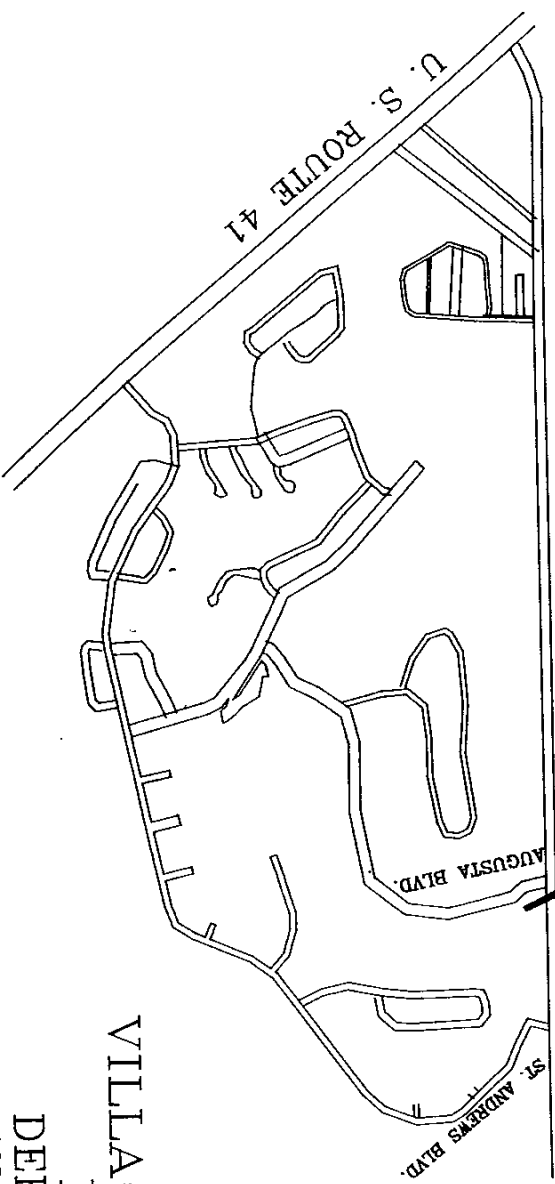
---

# VICINITY MAP

VILLAGE GREENS OF LELY  
LOCATED HERE

RATTLESNAKE HAMMOCK RD

NORTH



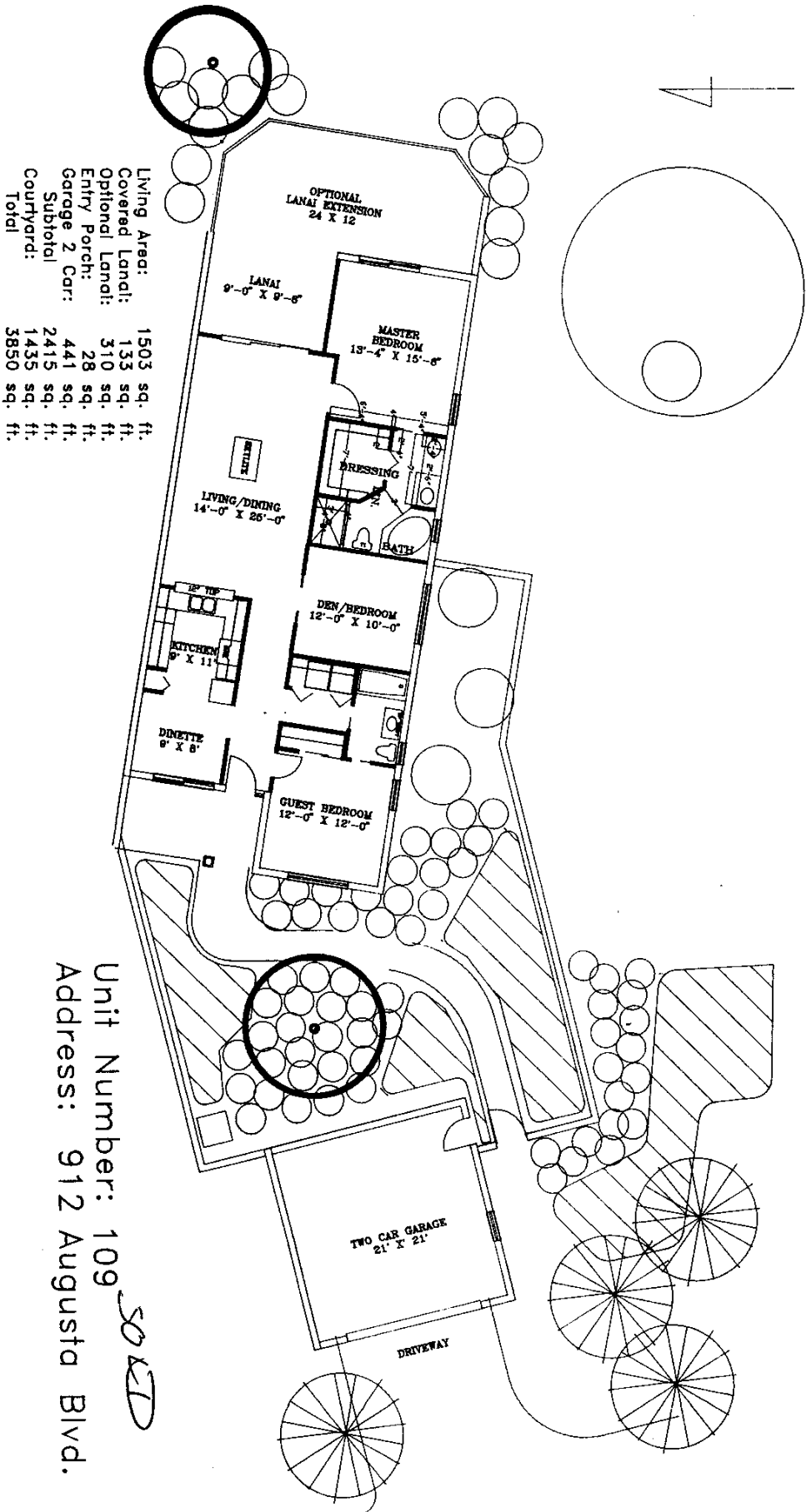
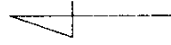
## VILLAGE GREENS OF LELY

DEVELOPED BY:  
DEERWOOD VILLAGE, INC.  
ON SITE OFFICE LOCATED AT:  
908 AUGUSTA BOULEVARD  
NAPLES, FLORIDA 33962  
(813) 774-2112



# VILLAGE GREENS OF LELLY

North



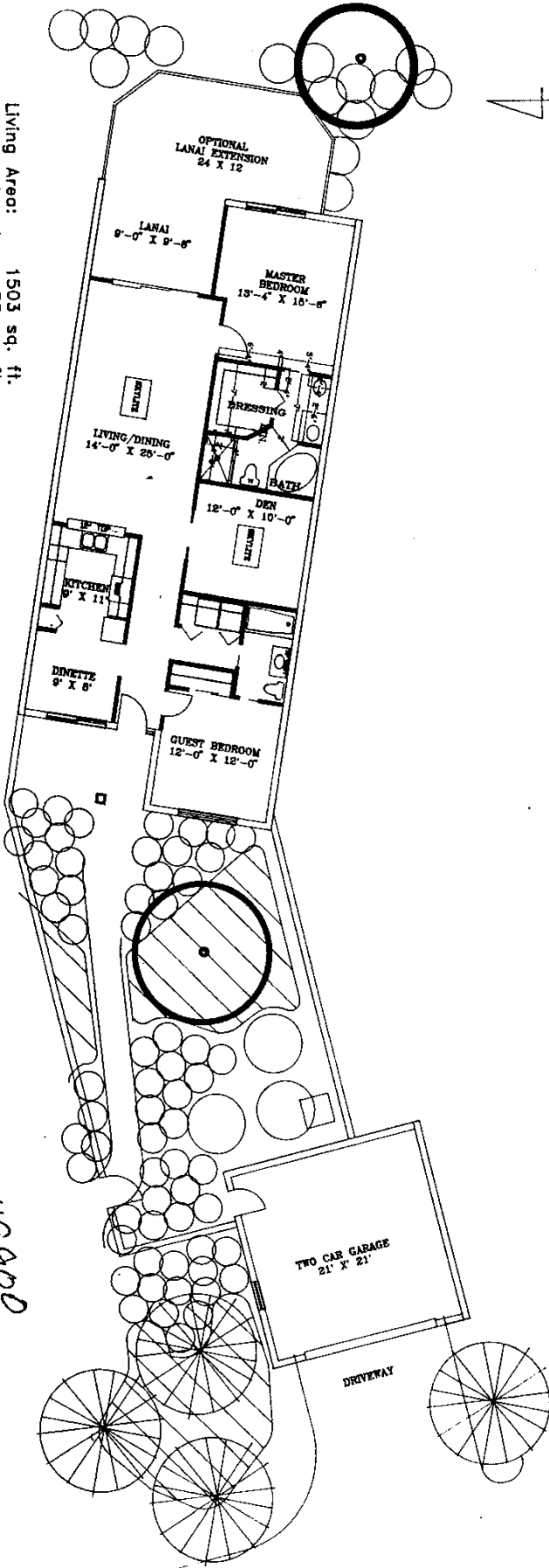
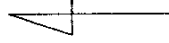
Living Area:	1503 sq. ft.
Covered Lanai:	133 sq. ft.
Optional Lanai:	310 sq. ft.
Entry Porch:	28 sq. ft.
Garage 2 Car:	441 sq. ft.
Subtotal:	2415 sq. ft.
Courtyard:	1435 sq. ft.
Total:	3850 sq. ft.

Unit Number: 109  
 Address: 912 Augusta Blvd.

*SPID*

# VILLAGE GREENS OF LELLY

North



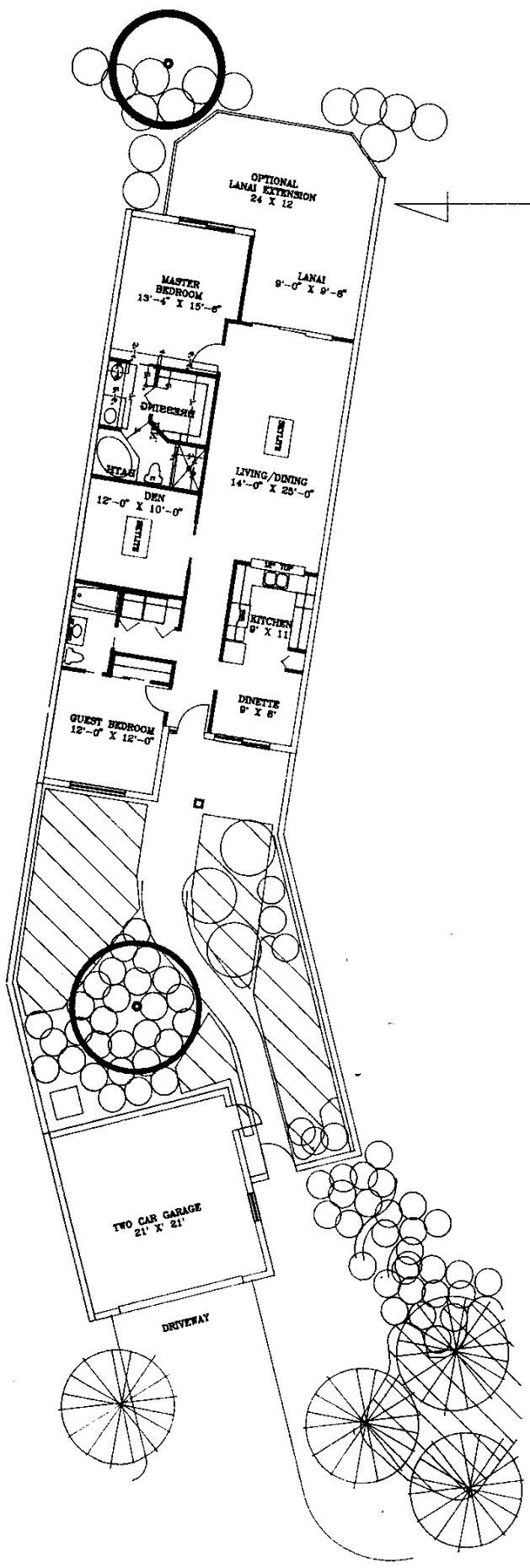
Living Area:	1503 sq. ft.
Covered Lanai:	133 sq. ft.
Optional Lanai:	262 sq. ft.
Entry Porch:	28 sq. ft.
Garage 2 Carr:	441 sq. ft.
Subtotal:	2367 sq. ft.
Courtyard:	1080 sq. ft.
Total:	3447 sq. ft.

*\$119,900*

Unit Number: 110  
 Address: 914 Augusta Blvd.

# VILLAGE GREENS OF LELLY

North



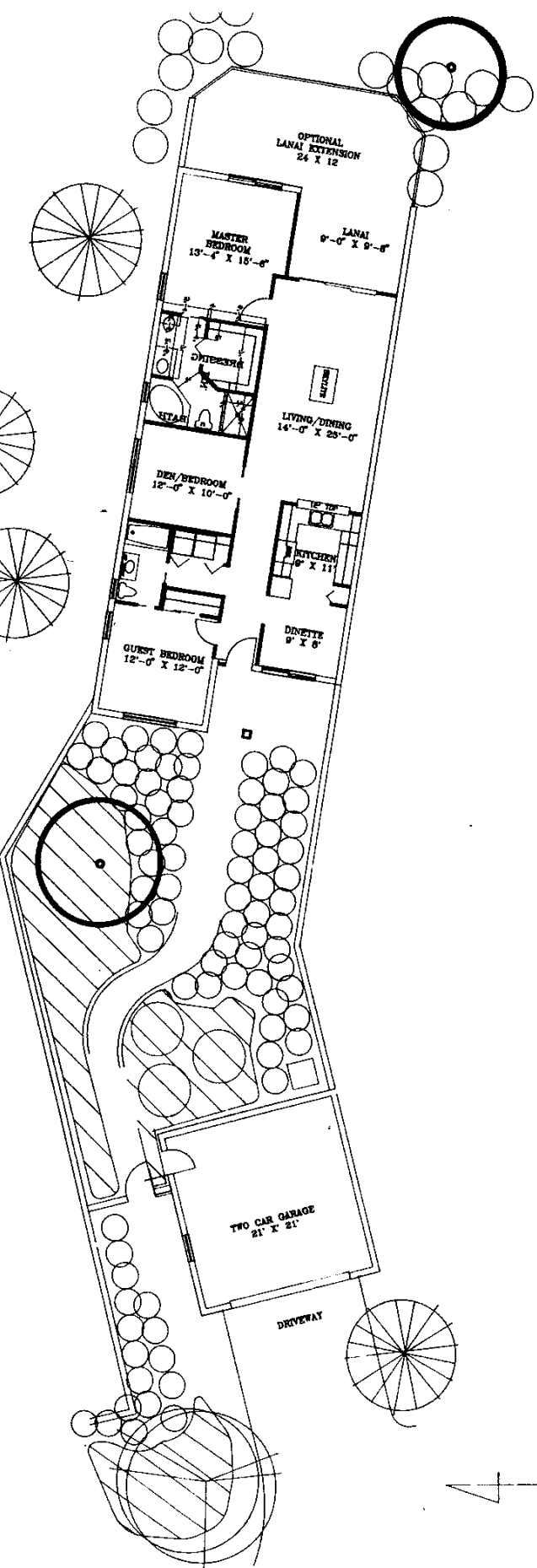
Living Area:	1503 sq. ft.
Covered Lanai:	133 sq. ft.
Optional Lanai:	262 sq. ft.
Entry Porch:	28 sq. ft.
Garage 2 Car:	441 sq. ft.
Subtotal:	2367 sq. ft.
Courtyard:	1167 sq. ft.
Total:	3534 sq. ft.

*SOLD*

Unit Number: 111  
 Address: 916 Augusta Blvd.

# VILLAGE GREENS OF LELLY

North



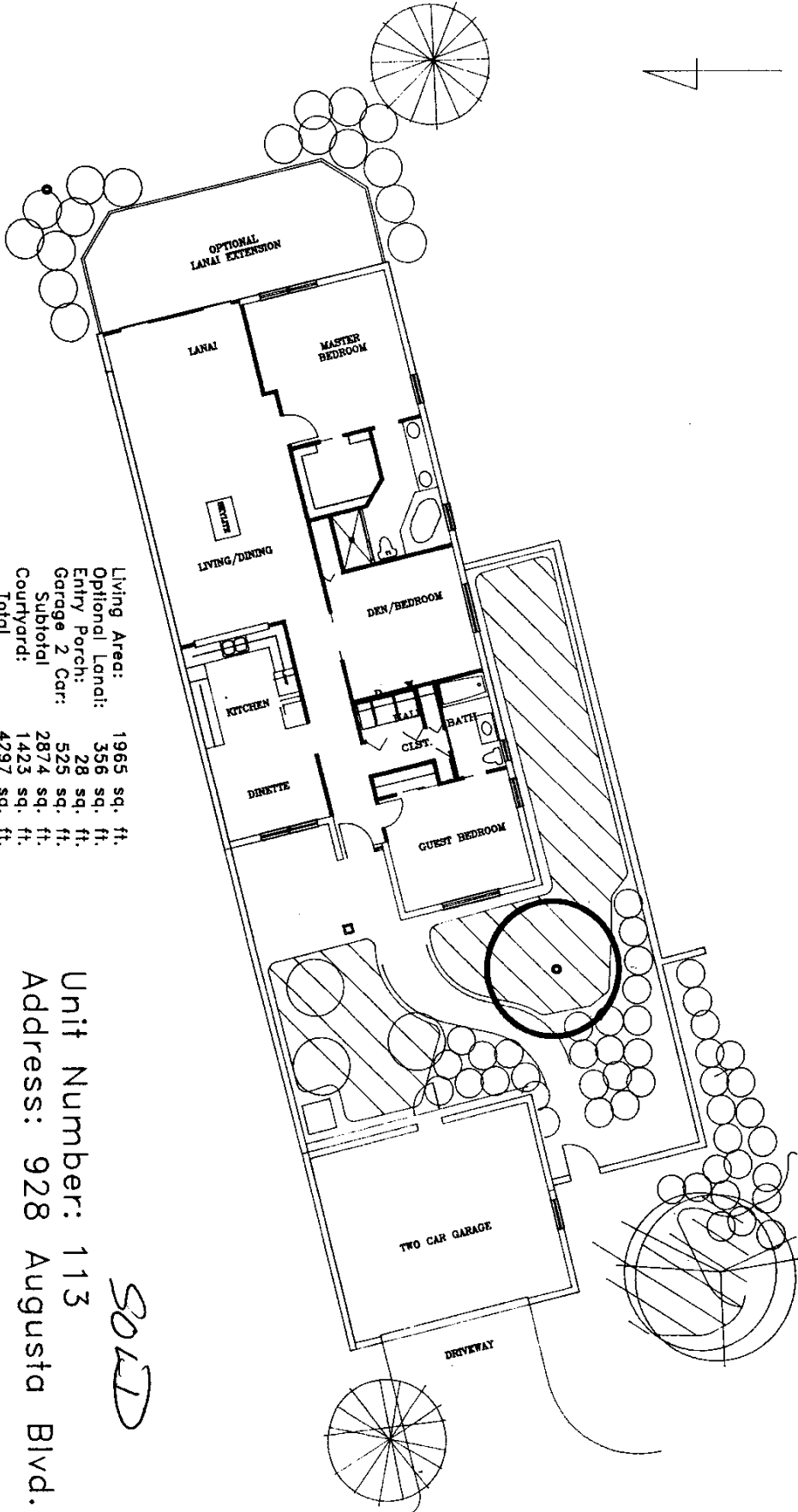
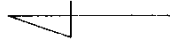
Living Area:	1503 sq. ft.
Covered Lanai:	133 sq. ft.
Optional Lanai:	310 sq. ft.
Entry Porch:	28 sq. ft.
Garage 2 Car:	441 sq. ft.
Subtotal	2415 sq. ft.
Courtyard:	1499 sq. ft.
Total	3914 sq. ft.

*\$129,900*

Unit Number: 112  
 Address: 918 Augusta Blvd.

# VILLAGE GREENS OF LELY

North



Living Area:	1965 sq. ft.
Optional Lanai:	356 sq. ft.
Entry Porch:	28 sq. ft.
Garage 2 Car:	525 sq. ft.
Subtotal:	2874 sq. ft.
Courtyard:	1423 sq. ft.
Total:	4297 sq. ft.

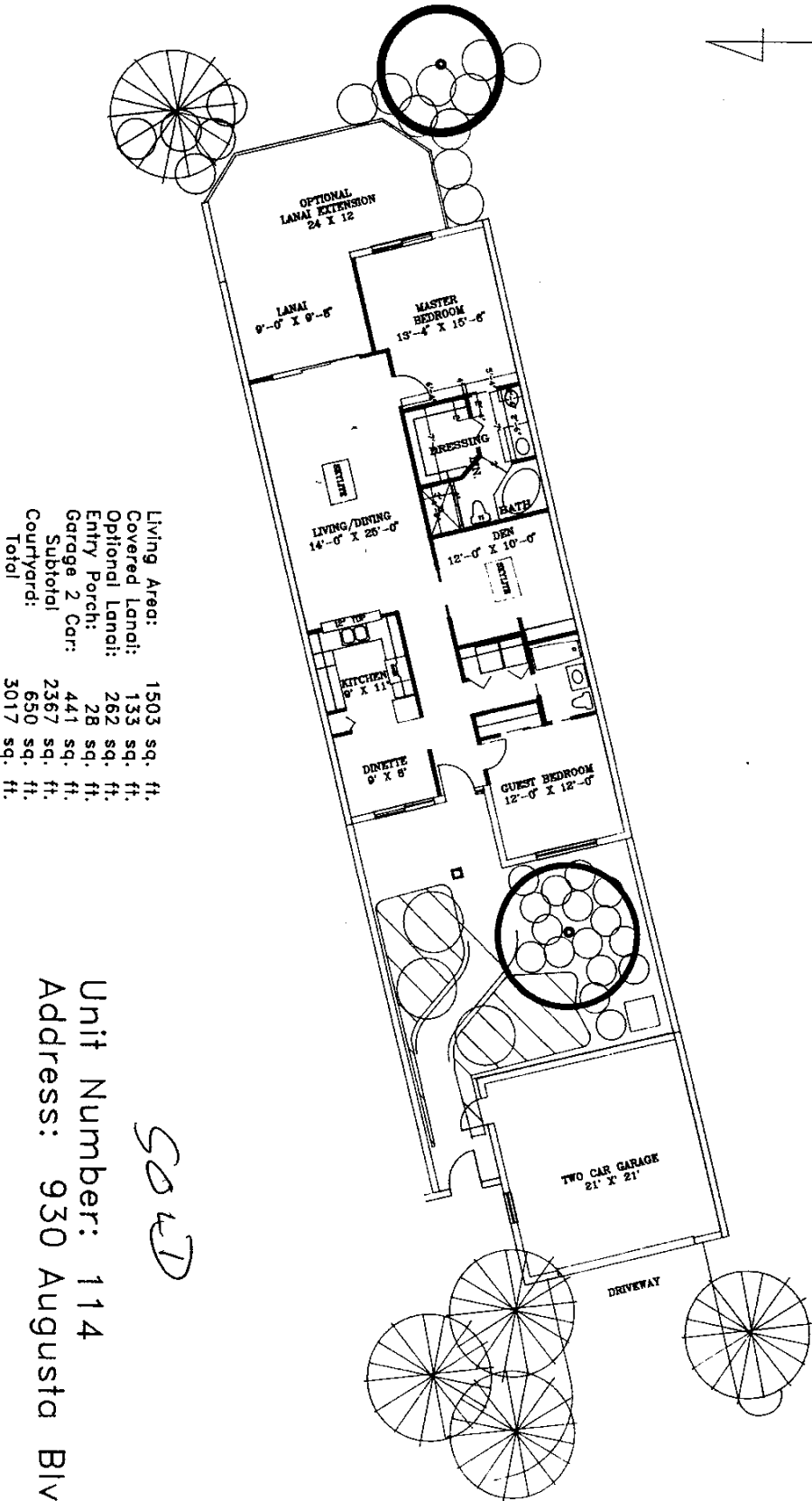
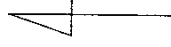
*SOLD*

Unit Number: 113  
 Address: 928 Augusta Blvd.



# VILLAGE GREENS OF LELLY

North



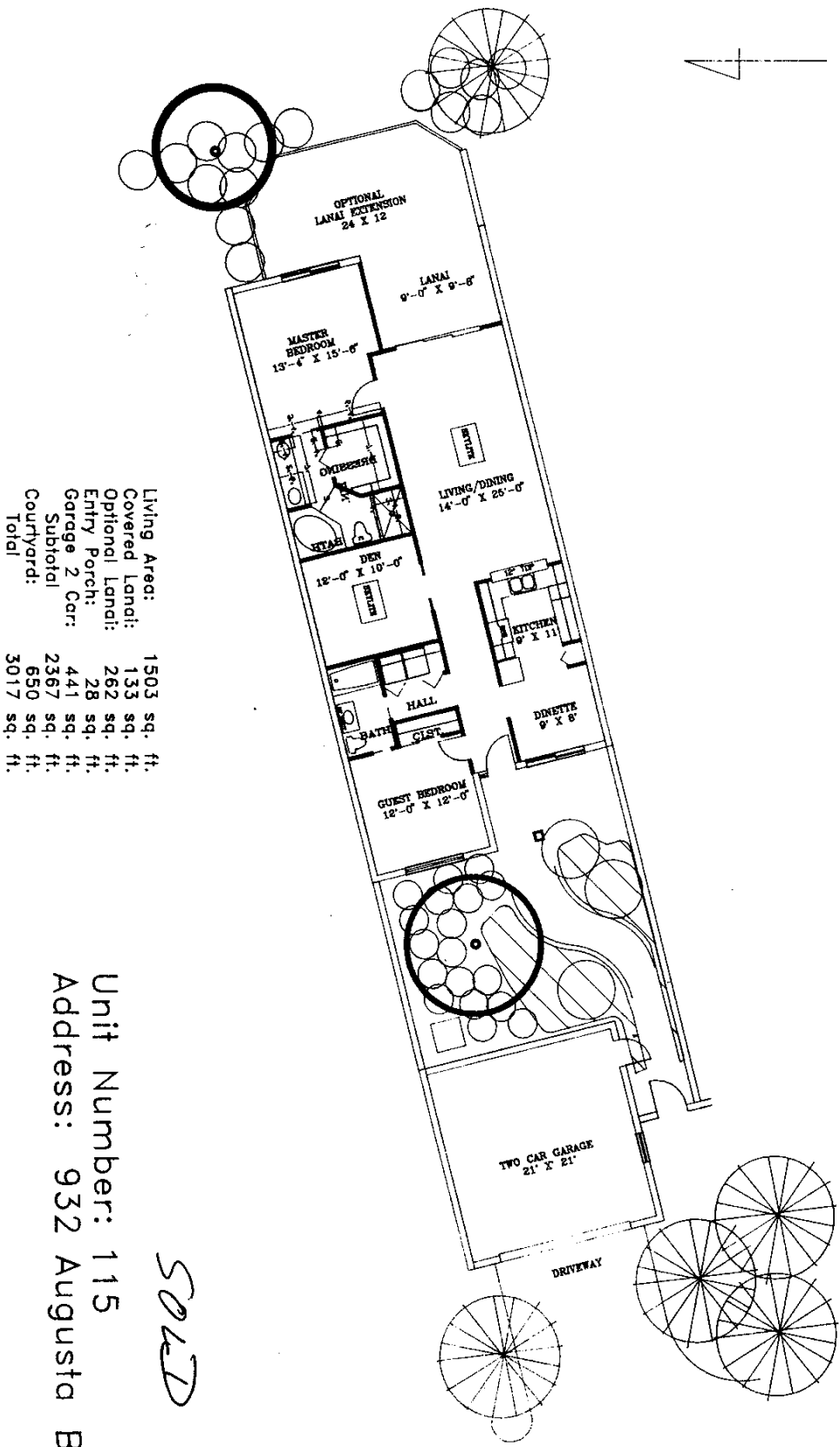
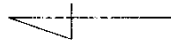
Living Area:	1503 sq. ft.
Covered Lanai:	133 sq. ft.
Optional Lanai:	262 sq. ft.
Entry Porch:	28 sq. ft.
Garage 2 Carr:	441 sq. ft.
Subtotal:	2367 sq. ft.
Courtyard:	650 sq. ft.
Total:	3017 sq. ft.

*SOLO*

Unit Number: 114  
 Address: 930 Augusta Blvd.

# VILLAGE GREENS OF LELLY

North



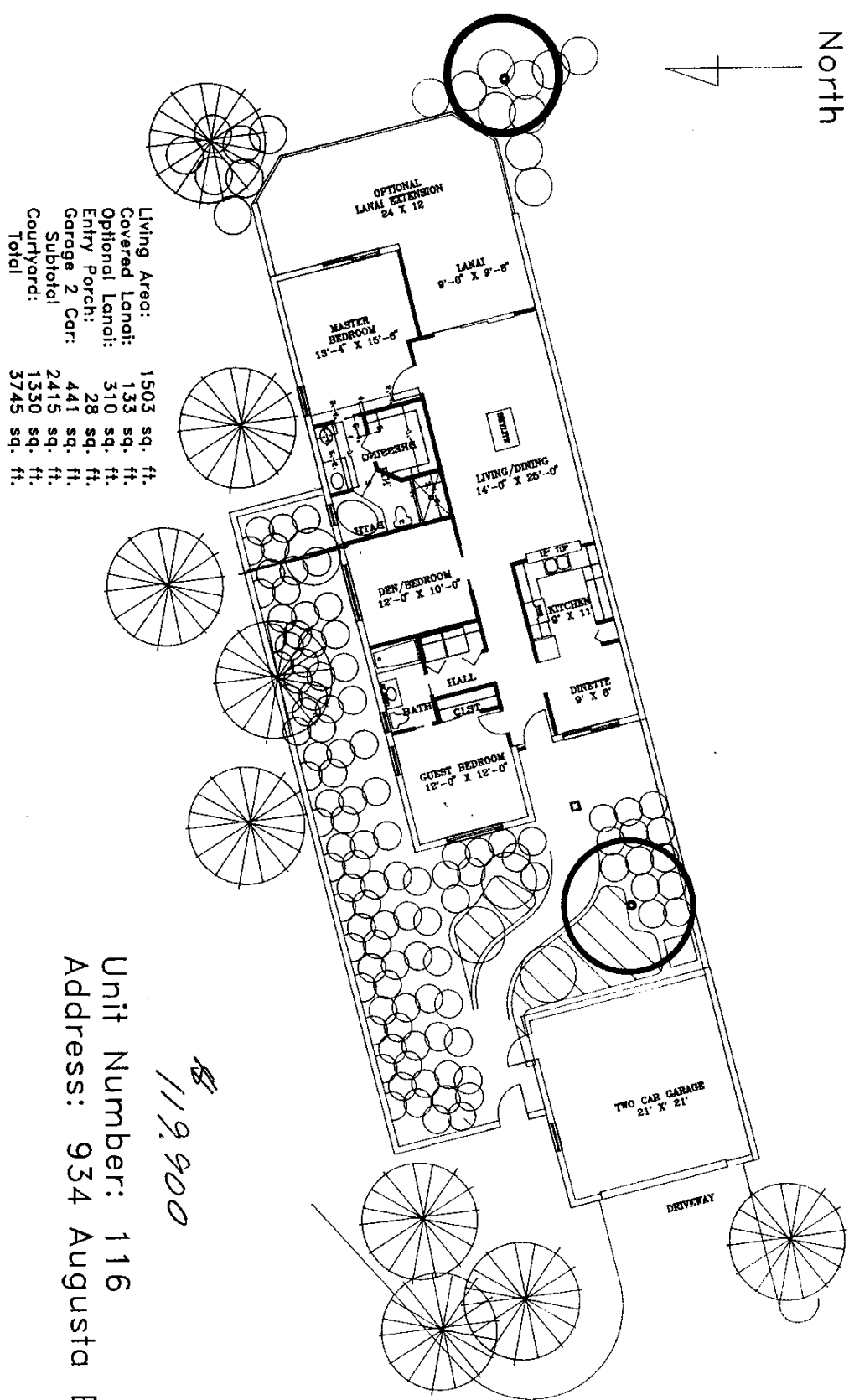
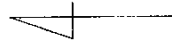
Living Area:	1503	sq. ft.
Covered Lanai:	133	sq. ft.
Optional Lanai:	262	sq. ft.
Entry Porch:	28	sq. ft.
Garage 2 Carr:	441	sq. ft.
Subtotal:	2367	sq. ft.
Courtyard:	650	sq. ft.
Total:	3017	sq. ft.

*SOLD*

Unit Number: 115  
 Address: 932 Augusta Blvd.

# VILLAGE GREENS OF LELLY

North



Living Area:	1503 sq. ft.
Covered Lanai:	133 sq. ft.
Optional Lanai:	310 sq. ft.
Entry Porch:	28 sq. ft.
Garage 2 Car:	441 sq. ft.
Subtotal:	2415 sq. ft.
Courtyard:	1330 sq. ft.
Total:	3745 sq. ft.

*119,900*

Unit Number: 116  
 Address: 934 Augusta Blvd.