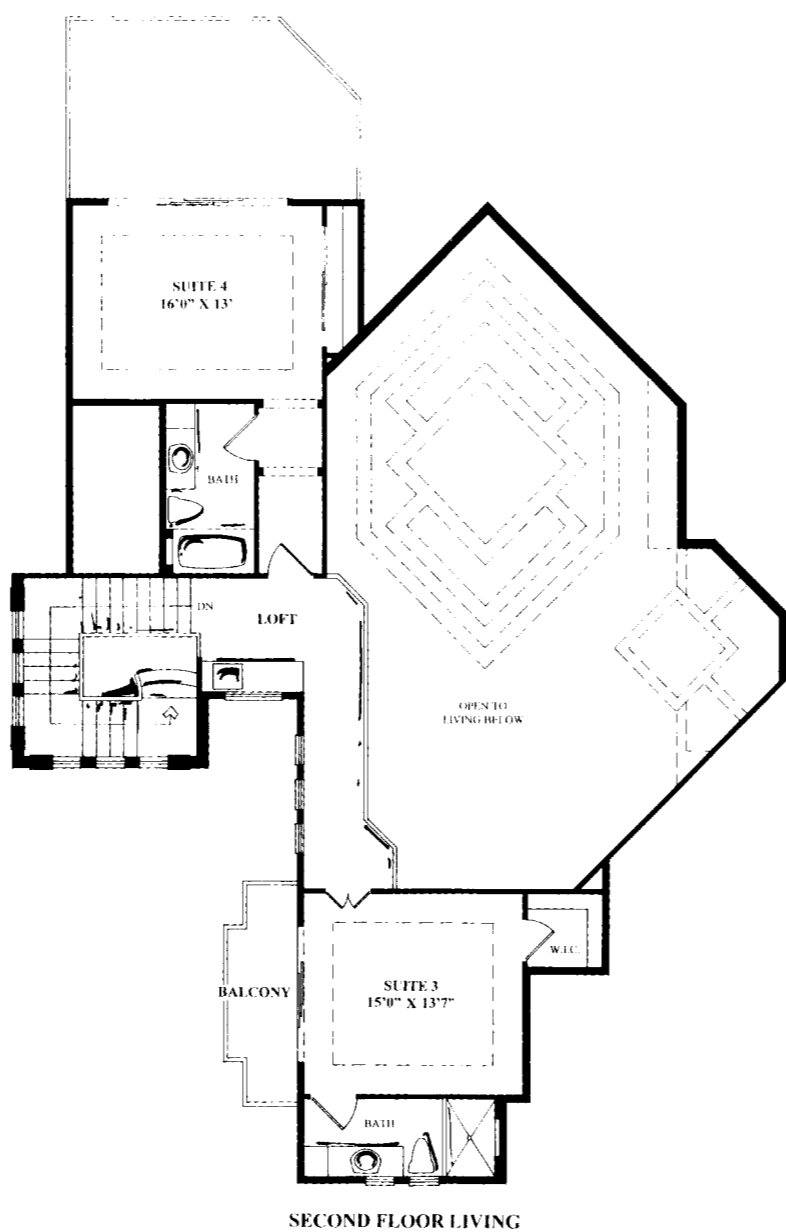


VILLA SIENA	
4 BEDROOM, 5 1/2 BATHS, 3 1/2-CAR GARAGE	
Living Area-1st Floor	4,959 sq.ft.
Living Area-2nd Floor	913 sq.ft.
Total A/C Living Area	5,872 sq.ft.
2 Car Garage	542 sq.ft.
1 1/2 Car Garage	539 sq.ft.
Veranda	1,731 sq.ft.
Entry	168 sq.ft.
Covered Colonnade	83 sq.ft.
Balcony	298 sq.ft.
Total Area	9,233 sq.ft.

All dimensions, features and specifications are approximate and subject to change.



FIRST FLOOR LIVING

SECOND FLOOR LIVING