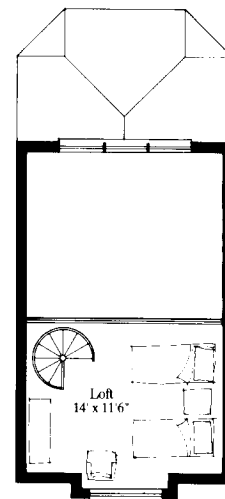
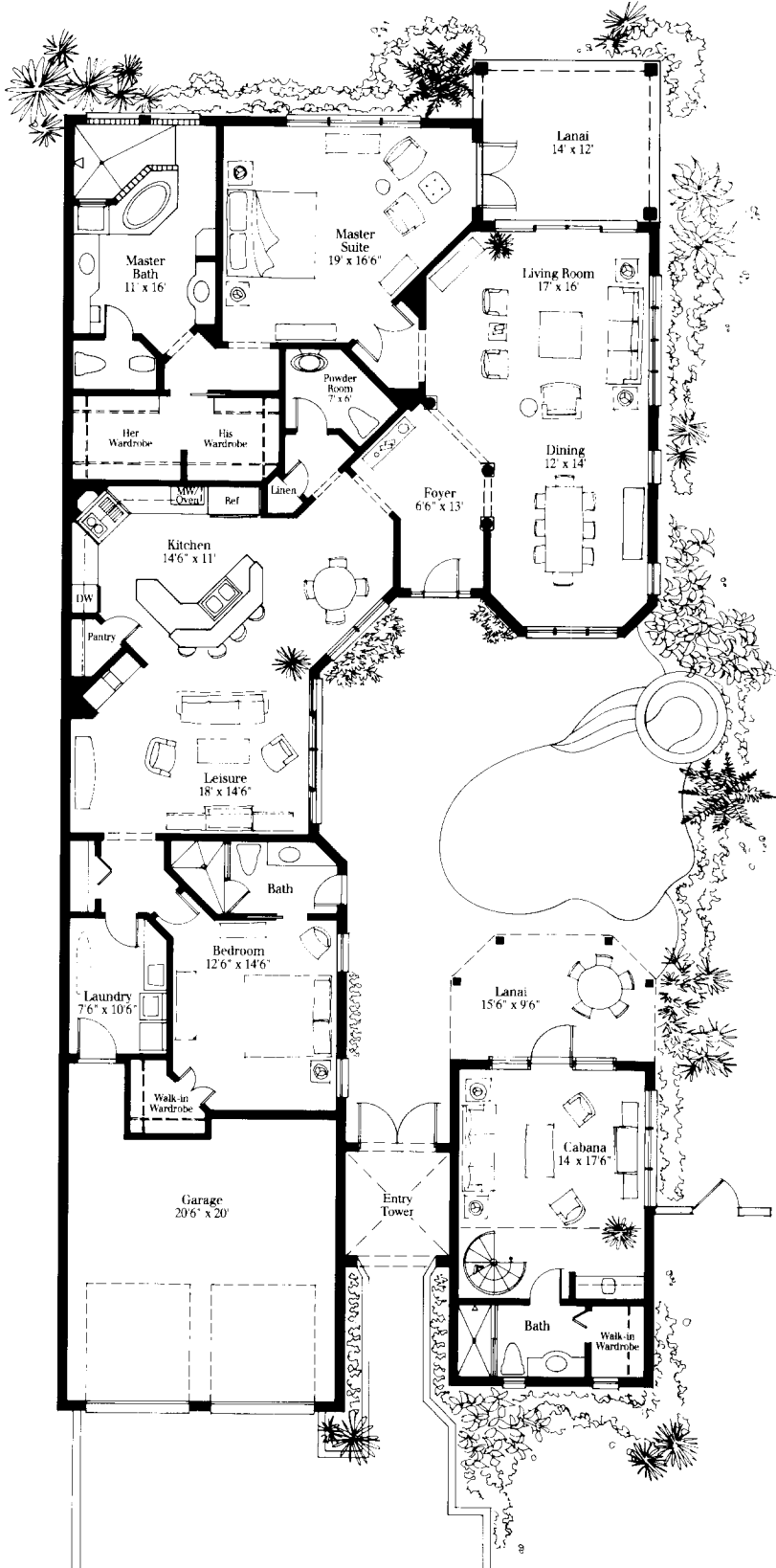


Villa La Palma

Villa Castile

| | |
|-------------------------------------|--------------------------|
| Air Conditioned Living Area | |
| First Floor | 2,890 Square Feet |
| Cabana Loft | 180 Square Feet |
| Total Air Conditioned | 3,070 Square Feet |
| Entry Tower | 72 Square Feet |
| Covered Lanais | 306 Square Feet |
| Garage | 450 Square Feet |
| Total Square Feet Under Roof | 3,898 Square Feet |

These drawings are conceptual only and are for the convenience of reference. They should not be relied upon as representations, express or implied, of the final detail of Villa La Palma at Bay Colony. The developer reserves the right to make modifications, alterations, and changes. Dimensions and square footage are approximate and may vary with actual construction. Dimensions are measured from interior surface of interior walls. Features and specifications are subject to change without notice.



Cabana Loft