

MUSTANG VILLAS

A T L E L Y R E S O R T

STRUCTURAL

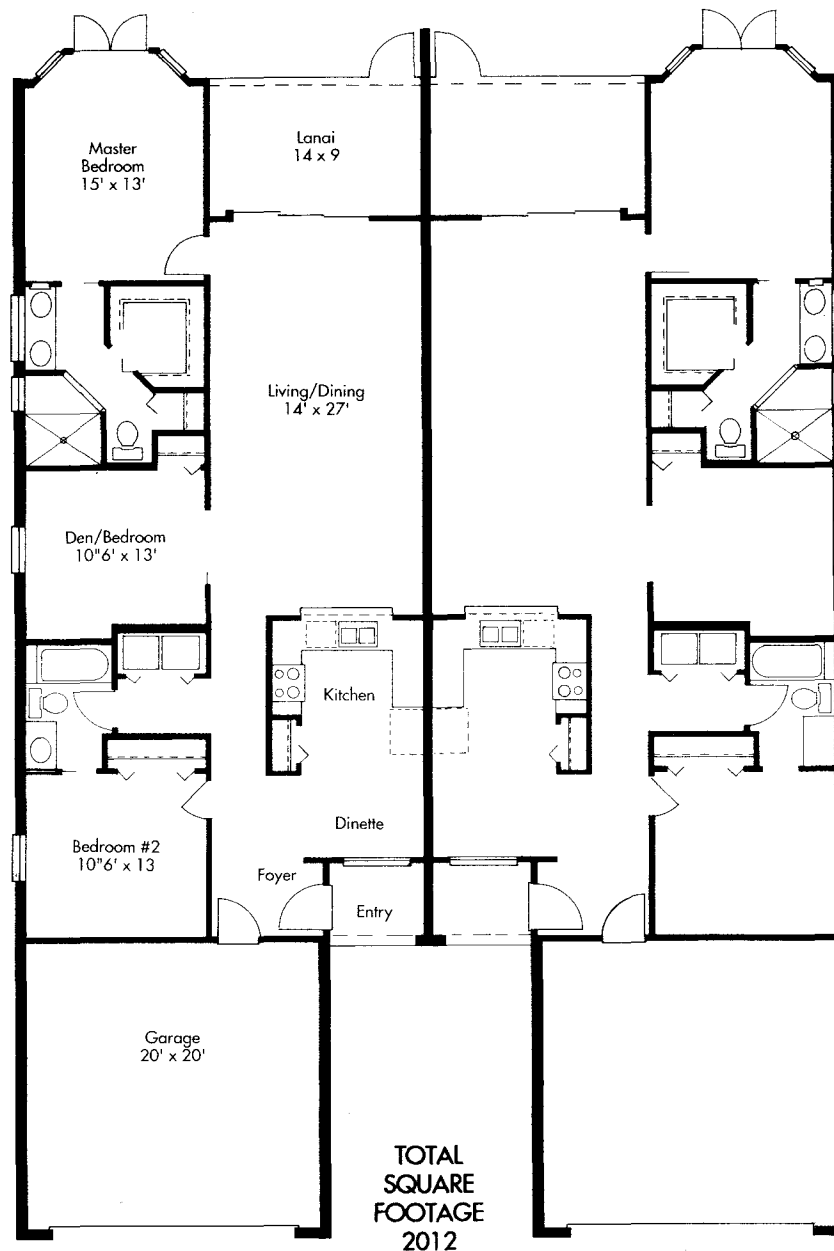
- CBS Construction
- 16 x 12 Steel Reinforced Monolithic Slab
- Termite Pretreat
- Vapor Barrier
- 8 x 16 Continuous Steel Reinforced Concrete Tie Beam
- Tile Roof
- Engineered Roof Trusses - 24" O.C.
- Fiberglass Insulation
- R-19 Ceilings, R-11 Frame Walls
- R-3 Masonry Walls

ELECTRIC

- 150 Amp Service
- Smoke Detectors
- Pre-wire TV & Telephone - all Rooms
- Door Chime
- Fan Stub - all Rooms
- Pre-wire Garage Opener
- Range Hood

PLUMBING

- American Standard or Equivalent Fixtures
- Single Lever Faucets
- 2 Outside Hose Bibs
- Copper & PVC Lines
- 40 Gallon Water Heater
- Stainless Steel Double Kitchen Sink
- Garbage Disposal
- Built-in Dishwasher
- Ice Maker



EXTERIOR

- Aluminum Soffit
- Aluminum Fascia
- Textured Stucco
- Precast Concrete Window Sills
- 4" Reinforced Driveway & Sidewalk
- Fully Sodded Lot
- Fully Irrigated Lot
- Custom Landscape Design
- Steel Overhead Garage Door
- Insulated Steel Entry Door

INTERIOR

- Provincial Style Doors
- Provincial Style Bifolds
- Colonial Base & Casing
- Textured Drywall or Hardcoat
- Marble Window Sills
- Ceramic Tile Tub & Shower Areas
- White Aluminum Window Frames
- Custom Mica Cabinets & Vanities
- Ventilated Steel Shelving
- Washer & Dryer
- Kwikset Door Hardware
- Central Heat & High Efficiency Air Conditioner - 10.0 SEER

MUSTANG
DEVELOPMENT
CORPORATION

(813) 793-6272

Golf & Gulf Realty, Inc.

All dimensions are approximate and subject to field variations or change.