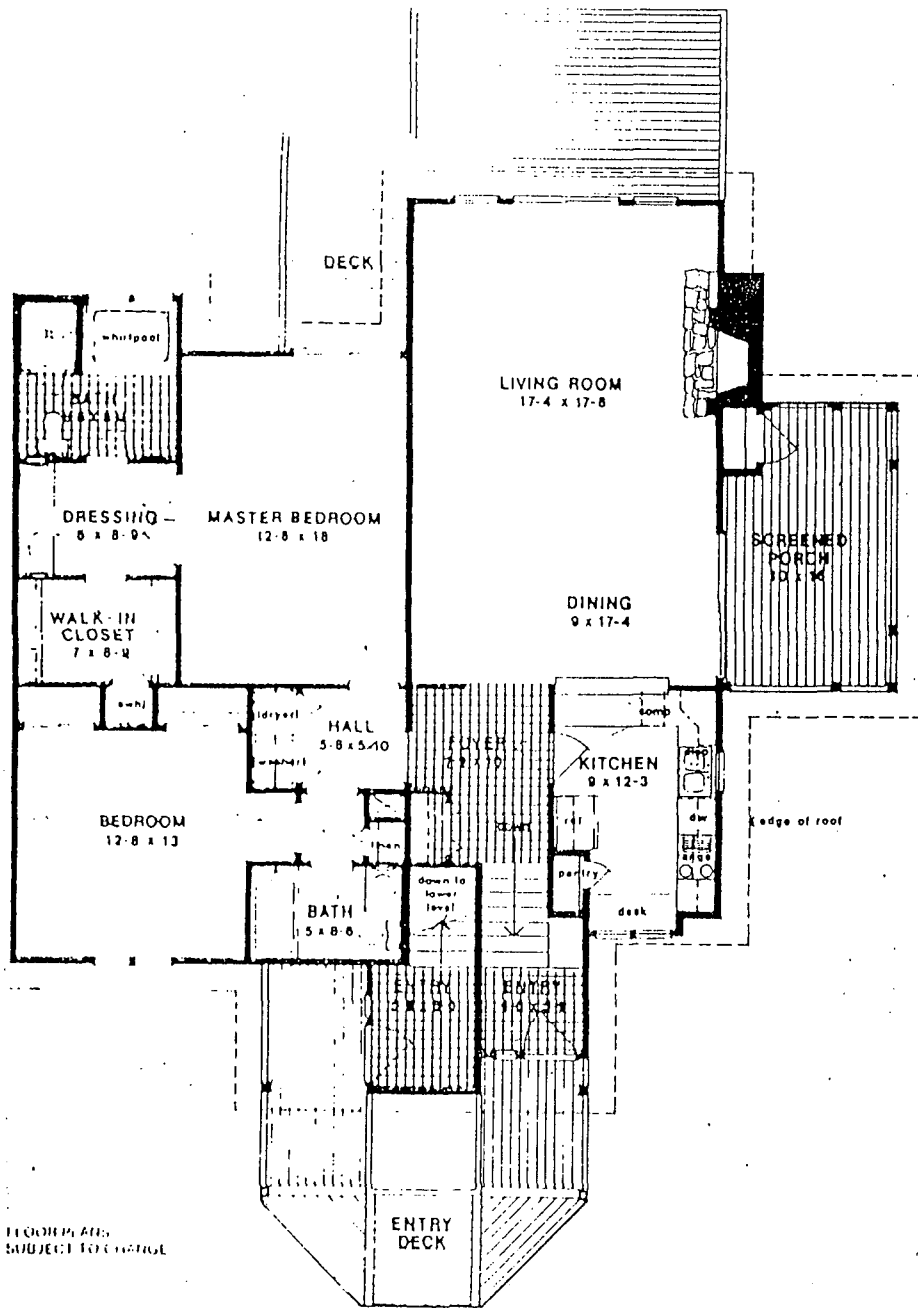


River Park Villa owners will all enjoy listening to the cascading waters over Millers Falls on the Horsepasture River located between the river and the #1 fairway. These villas have magnificent views of the golf course and the surrounding mountains including Mt. Toxaway. Several fortunate owners are a stones throw away from the falls and within viewing range. Our lovely secluded park joins this area and the swimming pool, tennis and clubhouse area are a short walk away. You will find a secure, serene atmosphere at River Park.



Condominiums include:

- Cedar Siding and Shake Roof
- Tile Entry Foyer
- Wood Trim Interiors
- Stone Fireplace
- Whirlpool Bath
- Tile Shower and Floors
- Heat Pump and A/C
- Wallpaper and Floor Coverings
- Refrigerator, Stove, Dishwasher, Trash Compactor, Disposal and microwave
- Oak Cabinets

UPPER UNIT

Heated Area	1,595 sq. ft.
Covered Screened Porch	160 sq. ft.
Open Decks	270 sq. ft.
Total	2,025 sq. ft.