

UNIT "H"

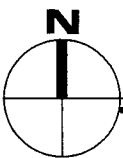
3 BEDROOMS, 3 BATHS, WITH ELEVATOR

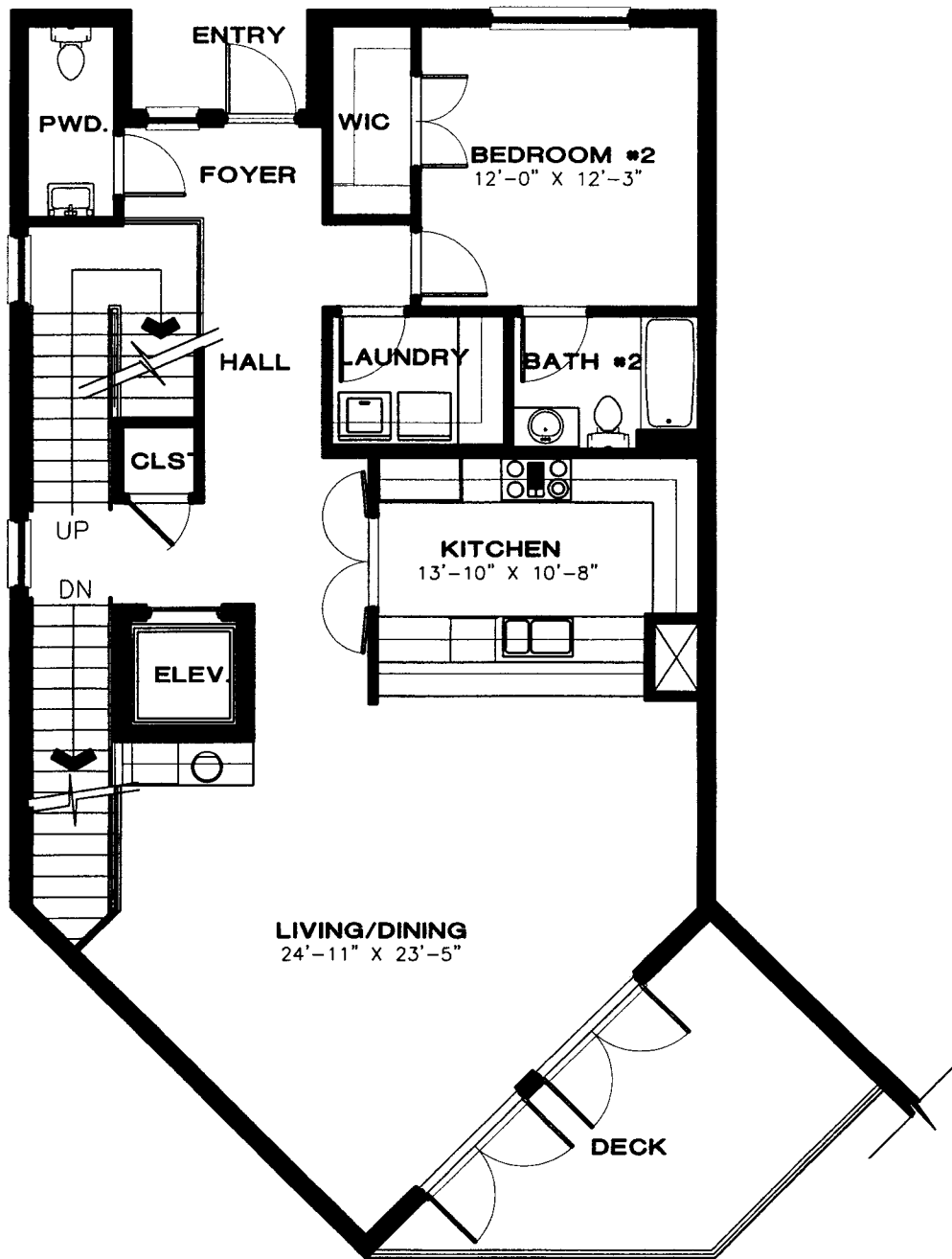
A/C LIVING SPACE AND STORAGE	3,185 Sq. Ft.
DECK SPACE	818 Sq. Ft.
GARAGE AREA	506 Sq. Ft.
TOTAL AREA	4,509 Sq. Ft.

The dimensions, sizes, configurations and other information contained on this drawing are subject to change without further notice, they are meant to be illustrative only, and are subject to actual construction variations as a result of field conditions and changes. Present and future use of surrounding areas and property depicted are not necessarily accurate.

1st FLOOR/GARAGE

SCALE 1/8" = 1'



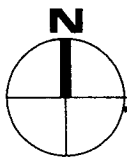
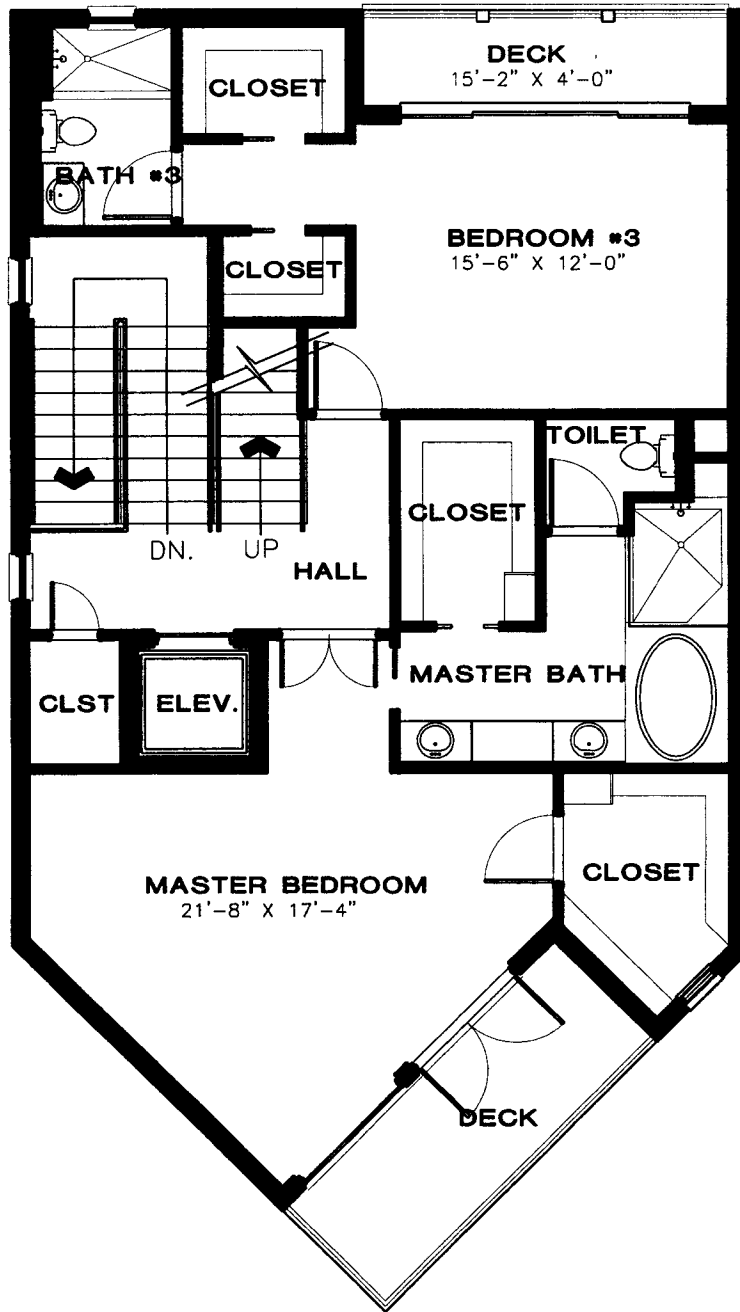


2nd FLOOR



**ARCHITECTURAL
NETWORK · INC**

OLDE NAPLES SEAPORT UNIT "H"
NAPLES, FLORIDA

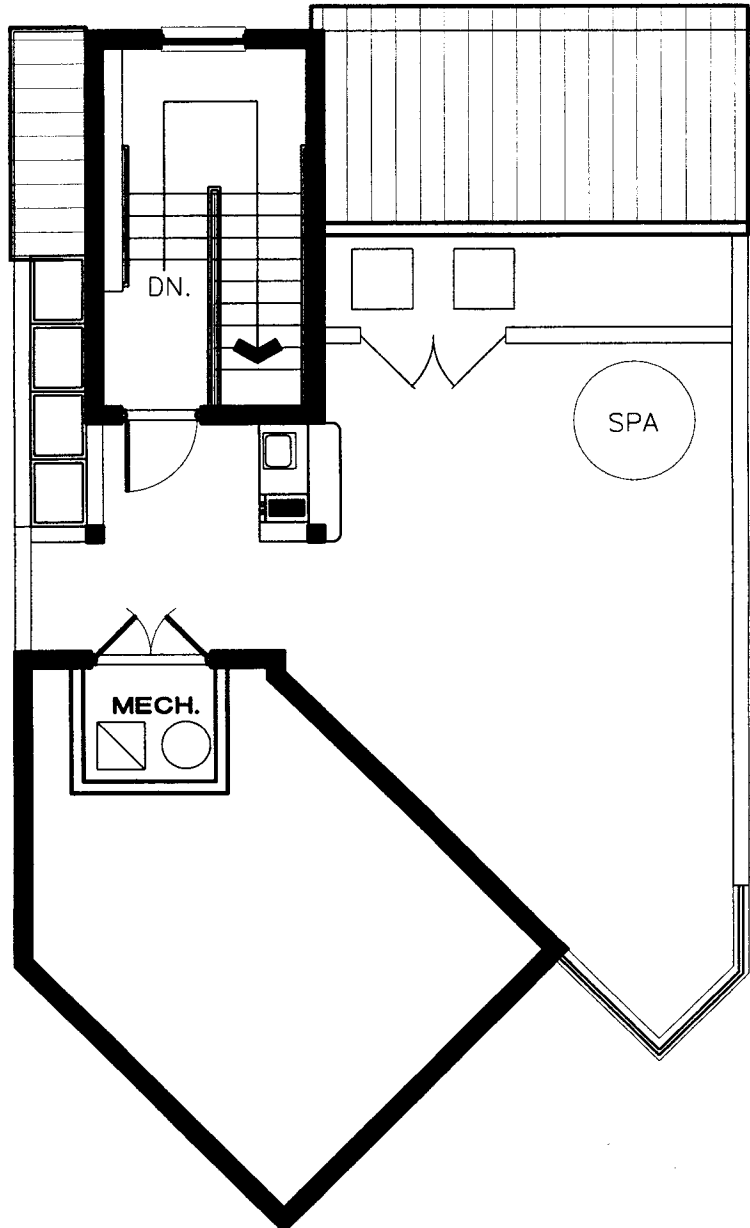


3rd FLOOR

SCALE 1/8" = 1'

**ARCHITECTURAL
NETWORK · INC**

OLDE NAPLES SEAPORT UNIT "H"
NAPLES, FLORIDA

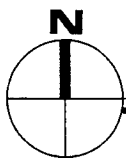
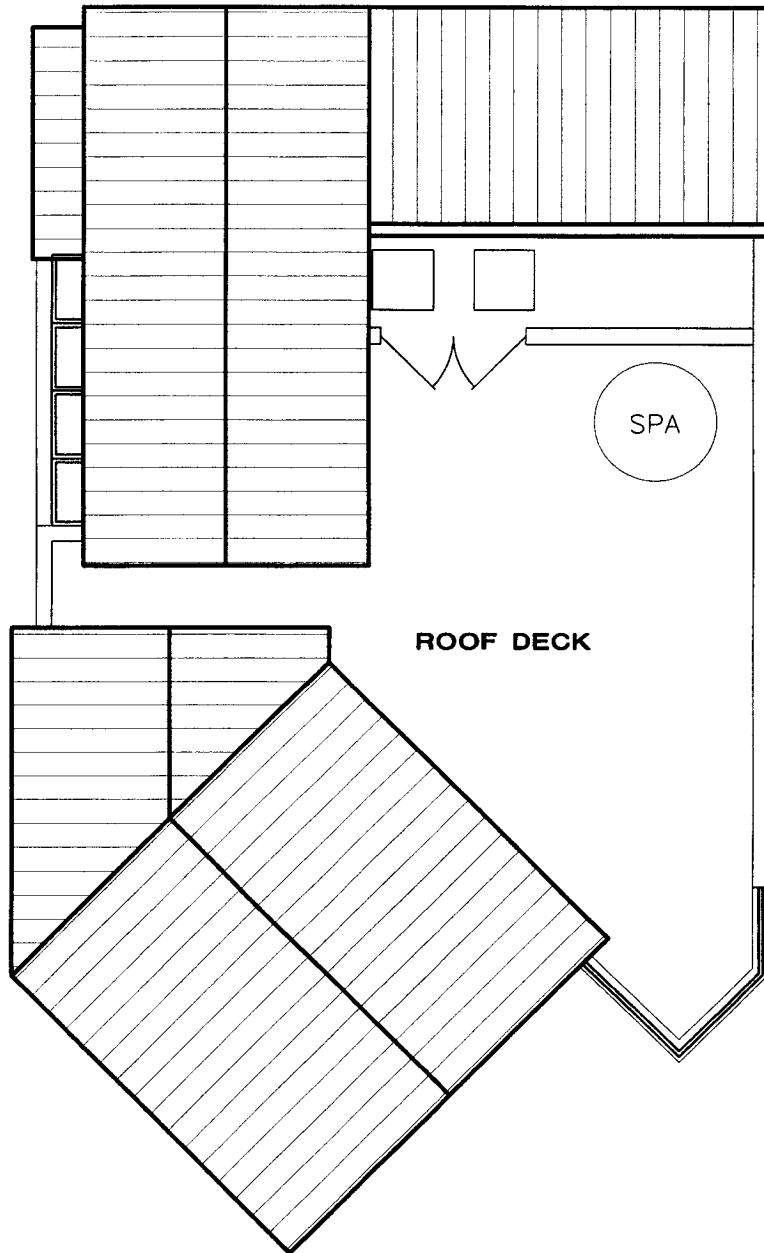


4th FLOOR

SCALE 1/8" = 1'

**ARCHITECTURAL
NETWORK · INC**

OLDE NAPLES SEAPORT UNIT "H"
NAPLES, FLORIDA



ROOF PLAN

SCALE 1/8" = 1'

ARCHITECTURAL
NETWORK · INC

OLDE NAPLES SEAPORT UNIT "H"
NAPLES, FLORIDA