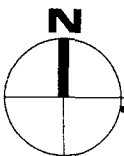


**UNIT "E"**

**3 BEDROOMS, 3 1/2 BATHS, WITH ELEVATOR**

|                              |                      |
|------------------------------|----------------------|
| A/C LIVING SPACE AND STORAGE | 3,218 Sq. Ft.        |
| DECK SPACE                   | 952 Sq. Ft.          |
| GARAGE AREA                  | 507 Sq. Ft.          |
| <b>TOTAL AREA</b>            | <b>4,677 Sq. Ft.</b> |

The dimensions, sizes, configurations and other information contained on this drawing are subject to change without further notice, they are meant to be illustrative only, and are subject to actual construction variations as a result of field conditions and changes. Present and future use of surrounding areas and property depicted are not necessarily accurate.

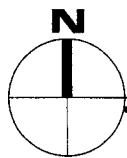
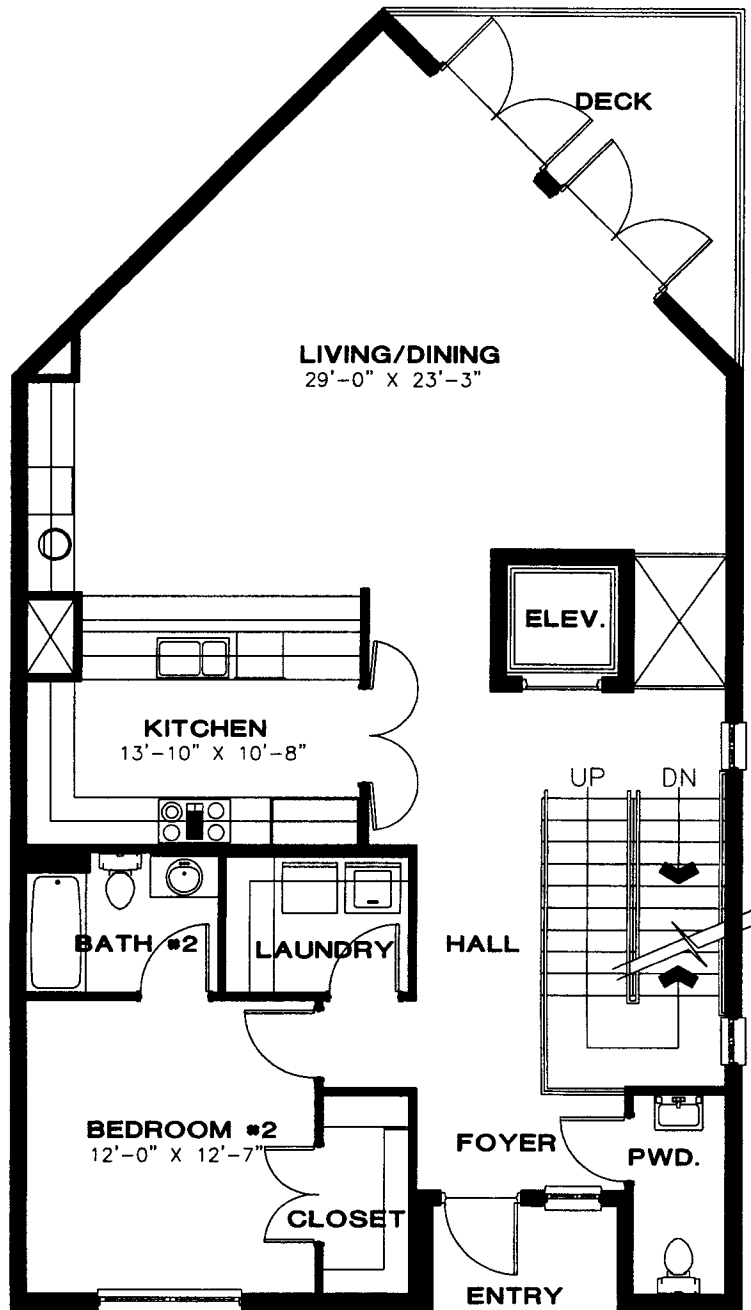


**1st FLOOR/GARAGE**

**SCALE 1/8" = 1'**

**ARCHITECTURAL  
NETWORK · INC**

**OLDE NAPLES SEAPORT UNIT "E"**  
**NAPLES, FLORIDA**

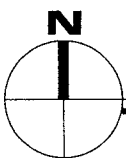
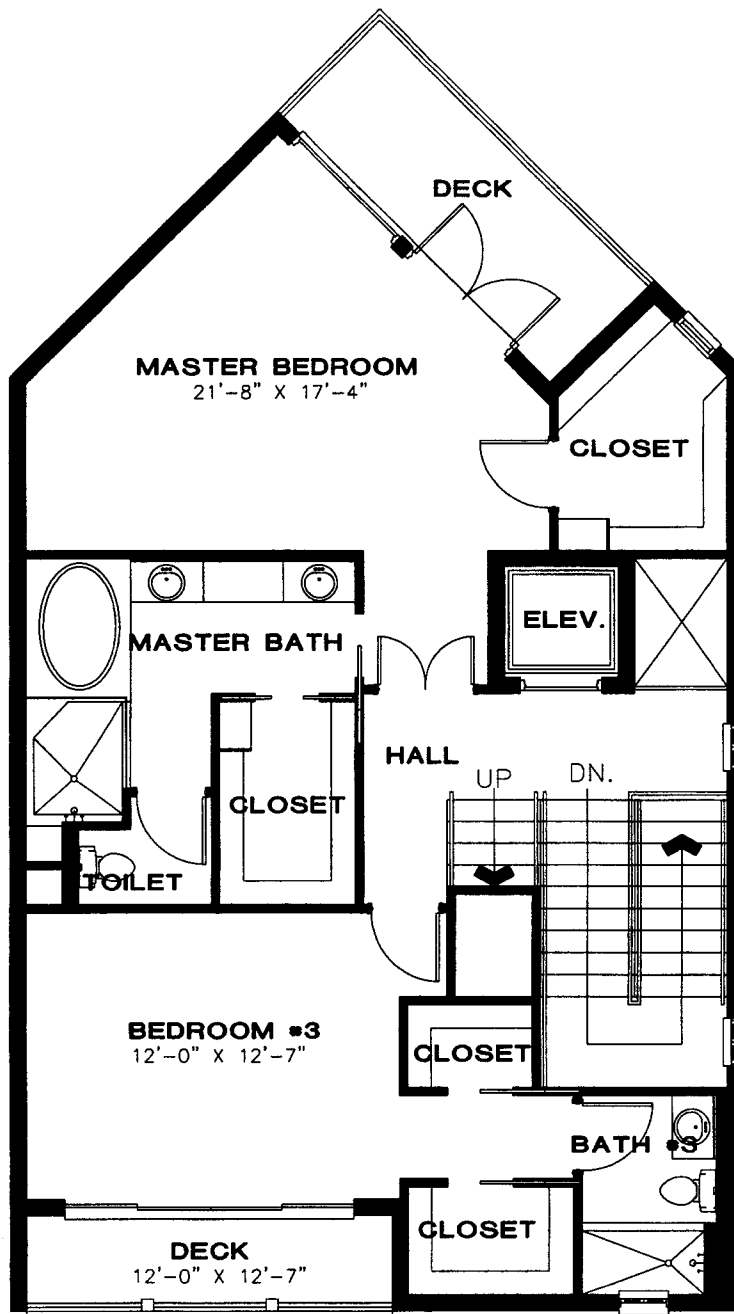


2nd FLOOR PLAN

SCALE 1/8" = 1'

**ARCHITECTURAL**  
NETWORK · INC

**OLDE NAPLES SEAPORT UNIT "E"**  
NAPLES, FLORIDA

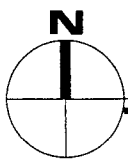
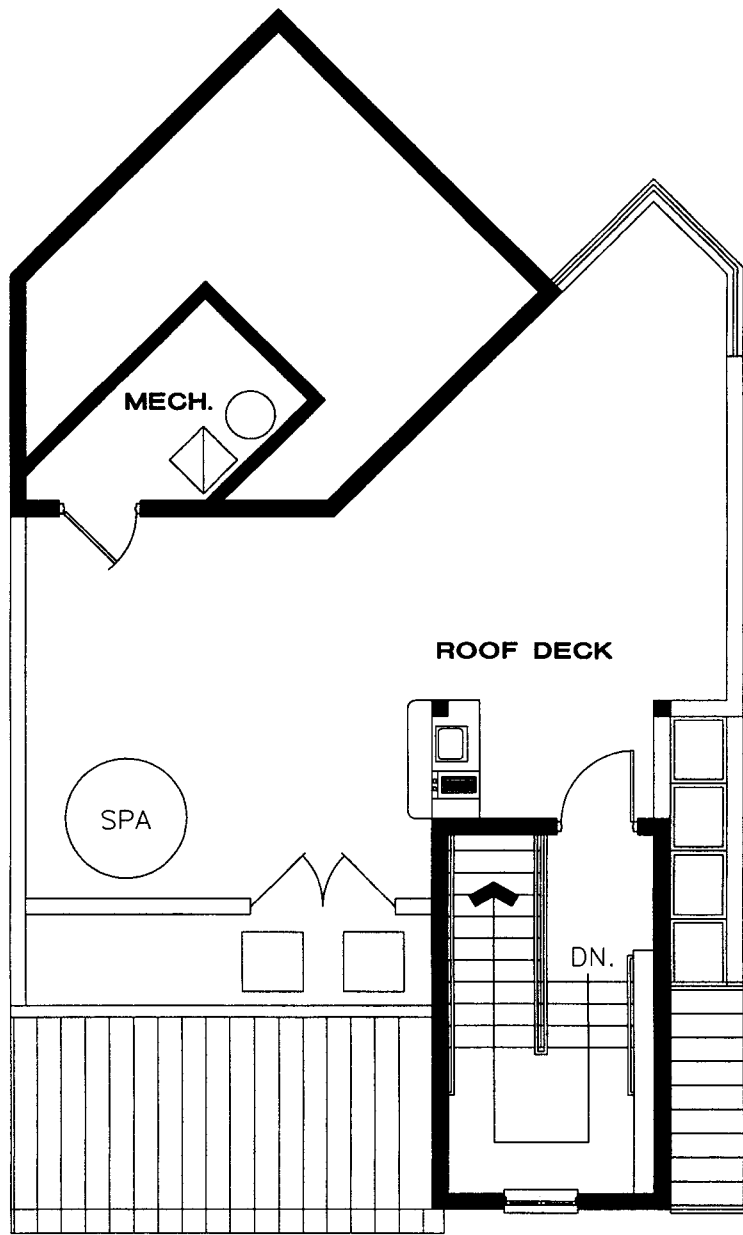


3rd FLOOR PLAN

SCALE 1/8" = 1'

**ARCHITECTURAL  
NETWORK · INC**

**OLDE NAPLES SEAPORT UNIT "E"**  
NAPLES, FLORIDA

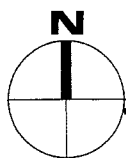
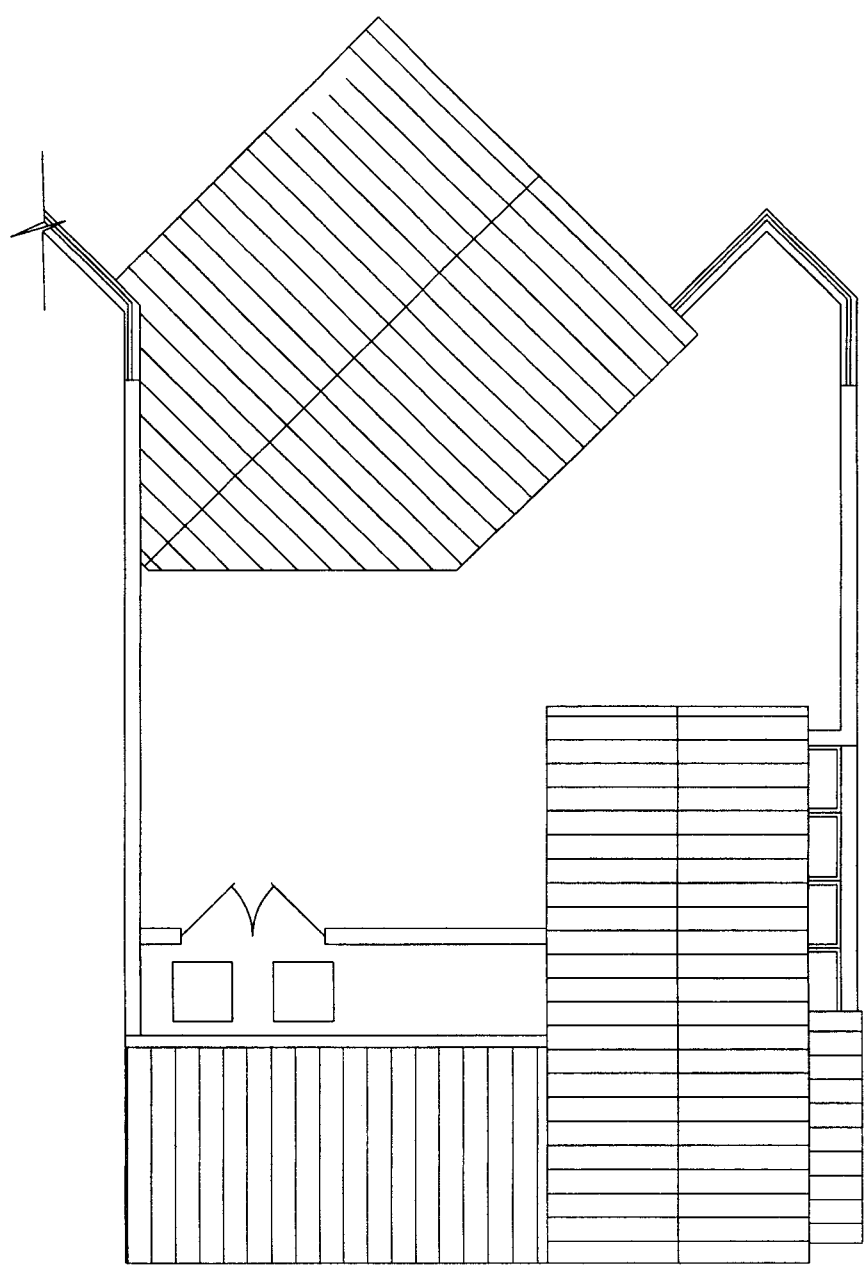


4th FLOOR PLAN

SCALE 1/8" = 1'

**ARCHITECTURAL**  
**NETWORK · INC**

**OLDE NAPLES SEAPORT UNIT "E"**  
NAPLES, FLORIDA



ROOF PLAN  
SCALE 1/8" = 1'

**ARCHITECTURAL**  
**NETWORK · INC**

**OLDE NAPLES SEAPORT UNIT "E"**  
NAPLES, FLORIDA