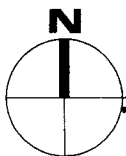


UNIT 'D'

3 BEDROOMS, 3 1/2 BATHS, WITH ELEVATOR

A/C LIVING SPACE AND STORAGE	3,387 Sq. Ft.
DECK SPACE	971 Sq. Ft.
GARAGE AREA	591 Sq. Ft.
TOTAL AREA	4,949 Sq. Ft.

The dimensions, sizes, configurations and other information contained on this drawing are subject to change without further notice, they are meant to be illustrative only, and are subject to actual construction variations as a result of field conditions and changes. Present and future use of surrounding areas and property depicted are not necessarily accurate.

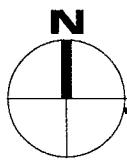
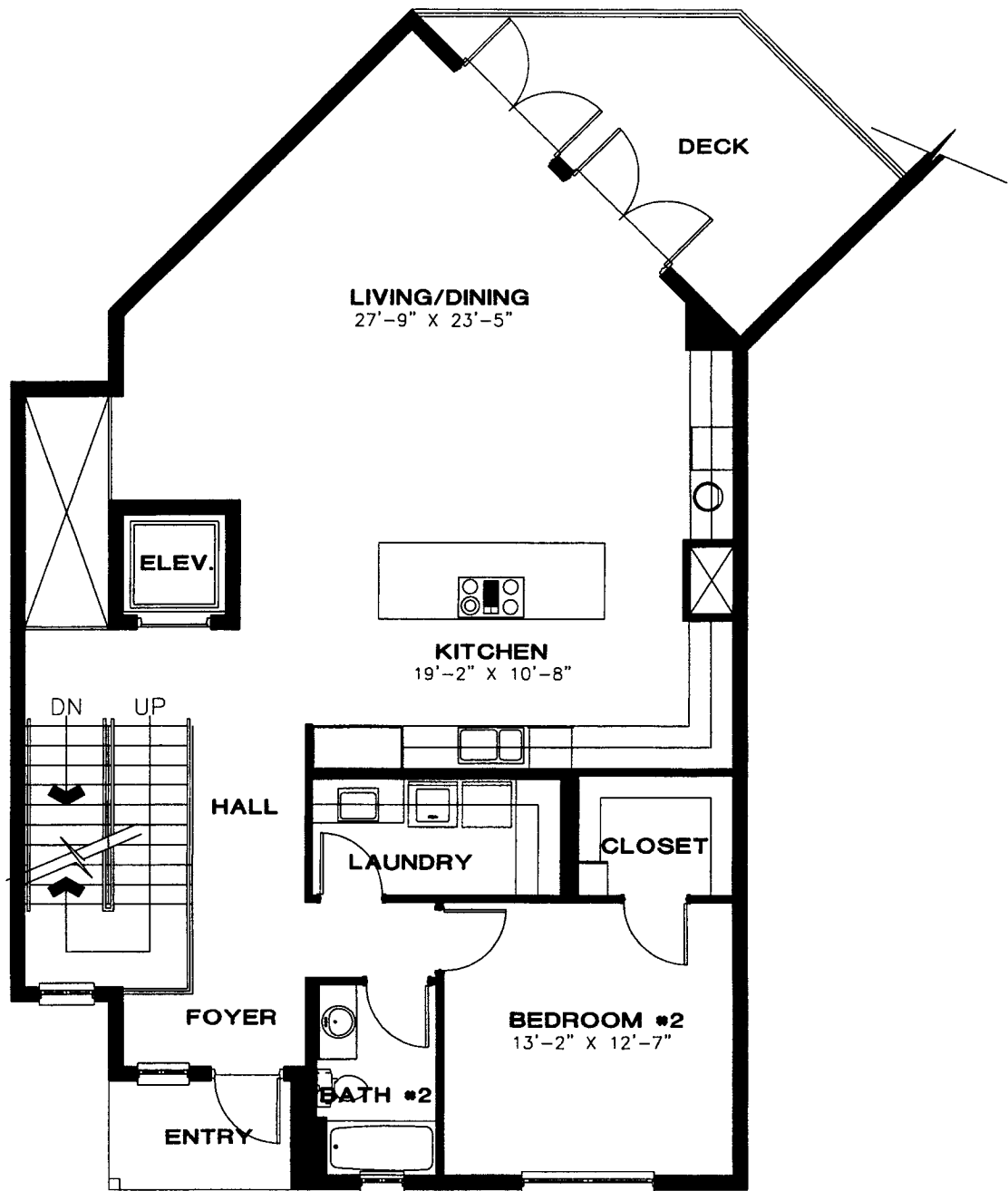


1st FLOOR/GARAGE

SCALE 1/8" = 1'

**ARCHITECTURAL
NETWORK · INC**

OLDE NAPLES SEAPORT UNIT "D"
NAPLES, FLORIDA

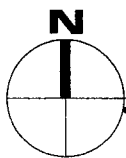
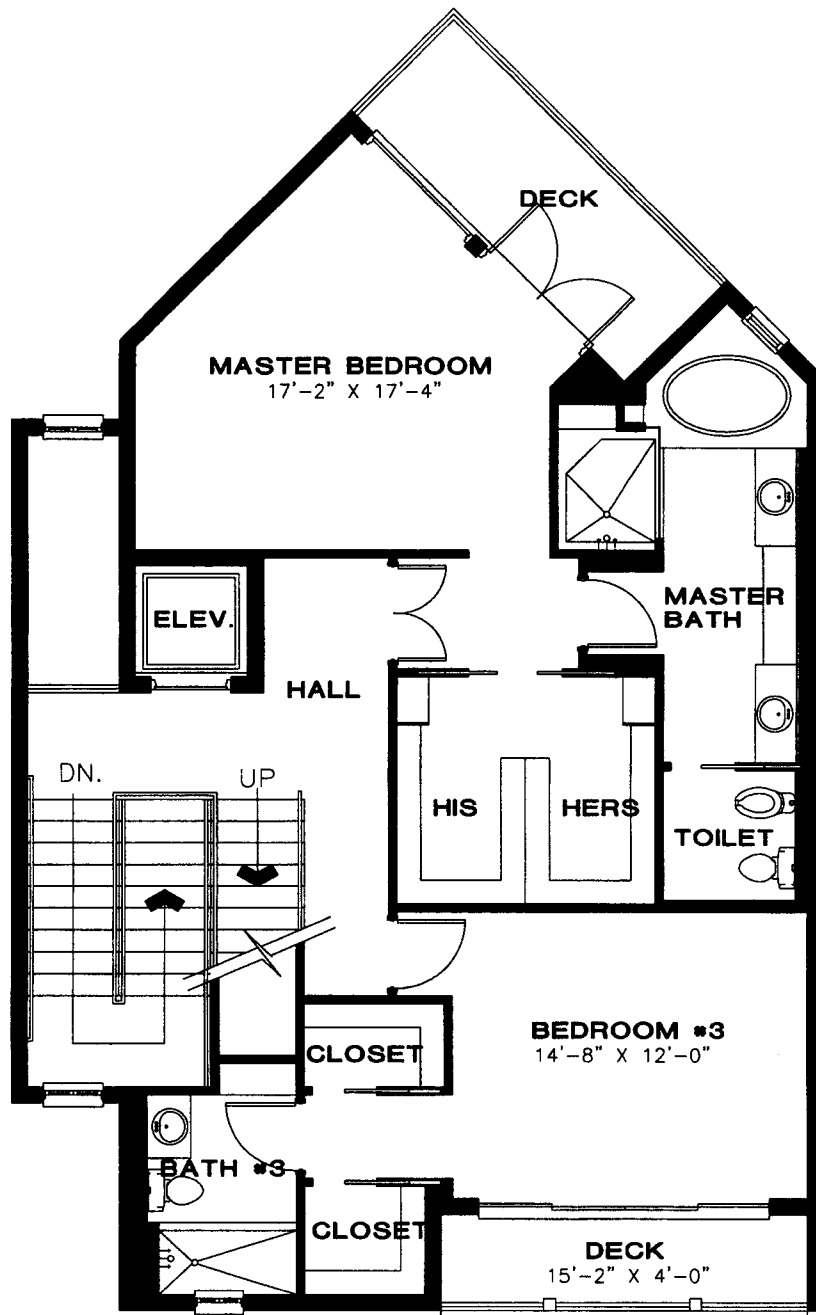


2nd FLOOR PLAN

SCALE 1/8" = 1'

ARCHITECTURAL
NETWORK · INC

OLDE NAPLES SEAPORT UNIT "D"
NAPLES, FLORIDA

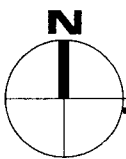
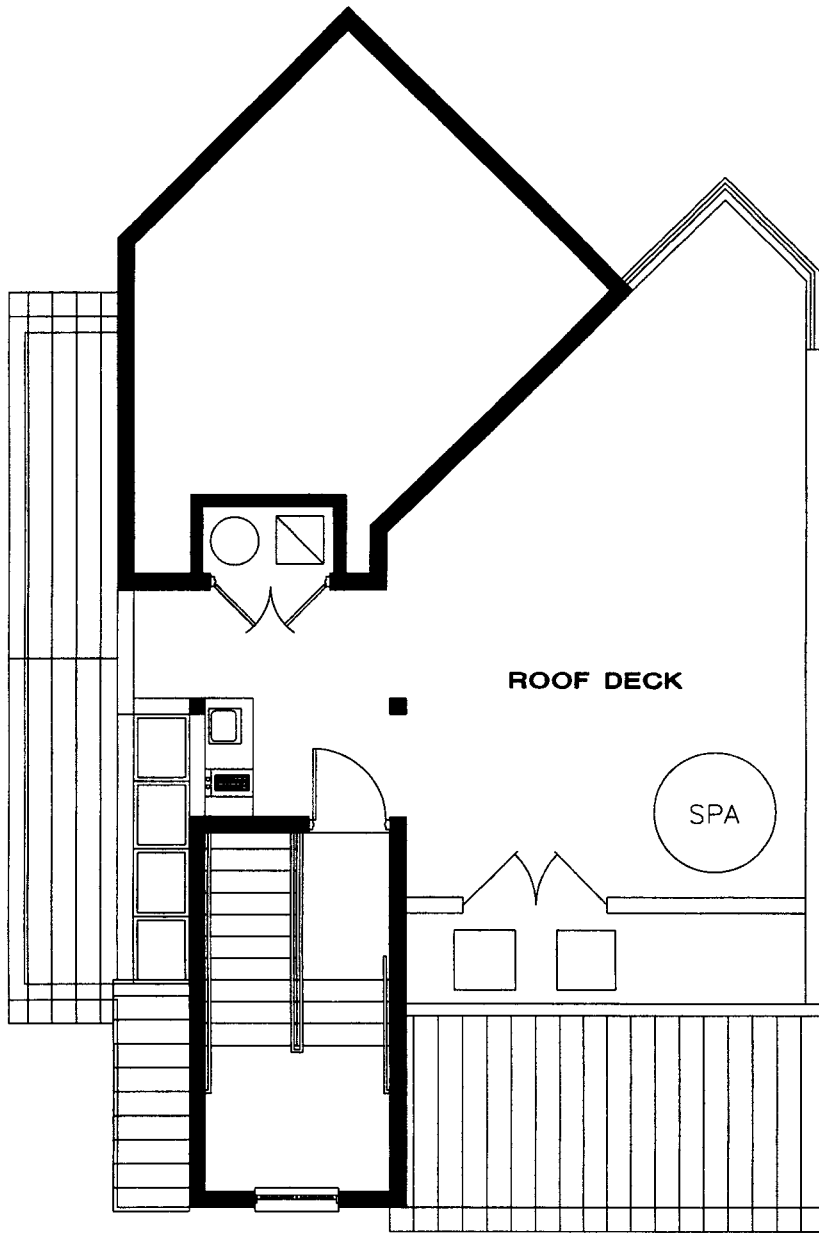


3rd FLOOR PLAN

SCALE 1/8" = 1'

ARCHITECTURAL
NETWORK · INC

OLDE NAPLES SEAPORT UNIT "D"
 NAPLES, FLORIDA

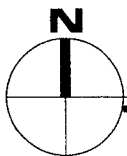
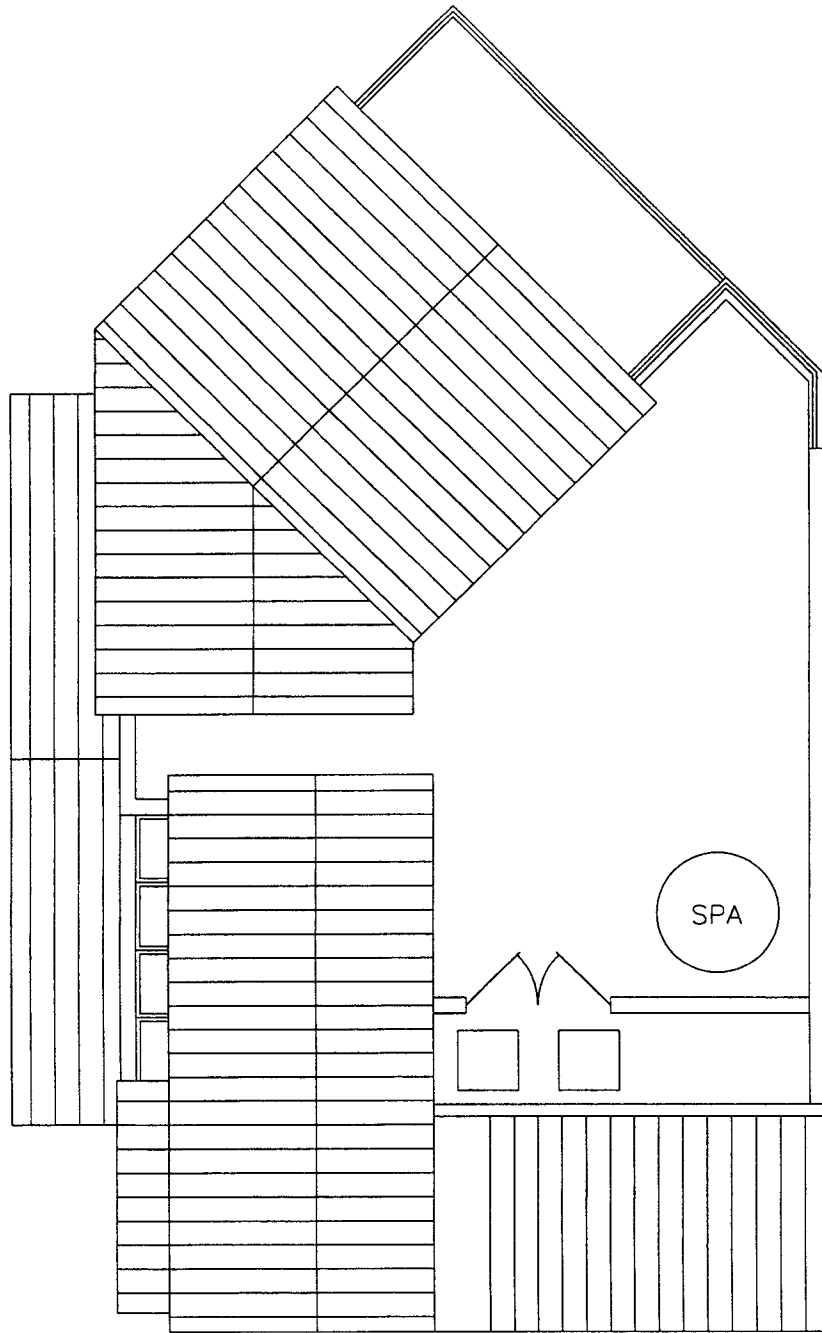


4th FLOOR PLAN

SCALE 1/8" = 1'

**ARCHITECTURAL
NETWORK · INC**

OLDE NAPLES SEAPORT UNIT "D"
NAPLES, FLORIDA



ROOF PLAN

SCALE 1/8" = 1'

ARCHITECTURAL
NETWORK · INC

OLDE NAPLES SEAPORT UNIT "D"
NAPLES, FLORIDA