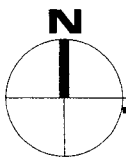


**UNIT "C"**

**3 BEDROOMS, 3 1/2 BATHS, WITH ELEVATOR**

A/C LIVING SPACE AND STORAGE	3,353 Sq. Ft.
DECK SPACE	409 Sq. Ft.
GARAGE AREA	592 Sq. Ft.
<b>TOTAL AREA</b>	<b>4,354 Sq. Ft.</b>

The dimensions, sizes, configurations and other information contained on this drawing are subject to change without further notice, they are meant to be illustrative only, and are subject to actual construction variations as a result of field conditions and changes. Present and future use of surrounding areas and property depicted are not necessarily accurate.

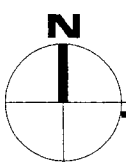
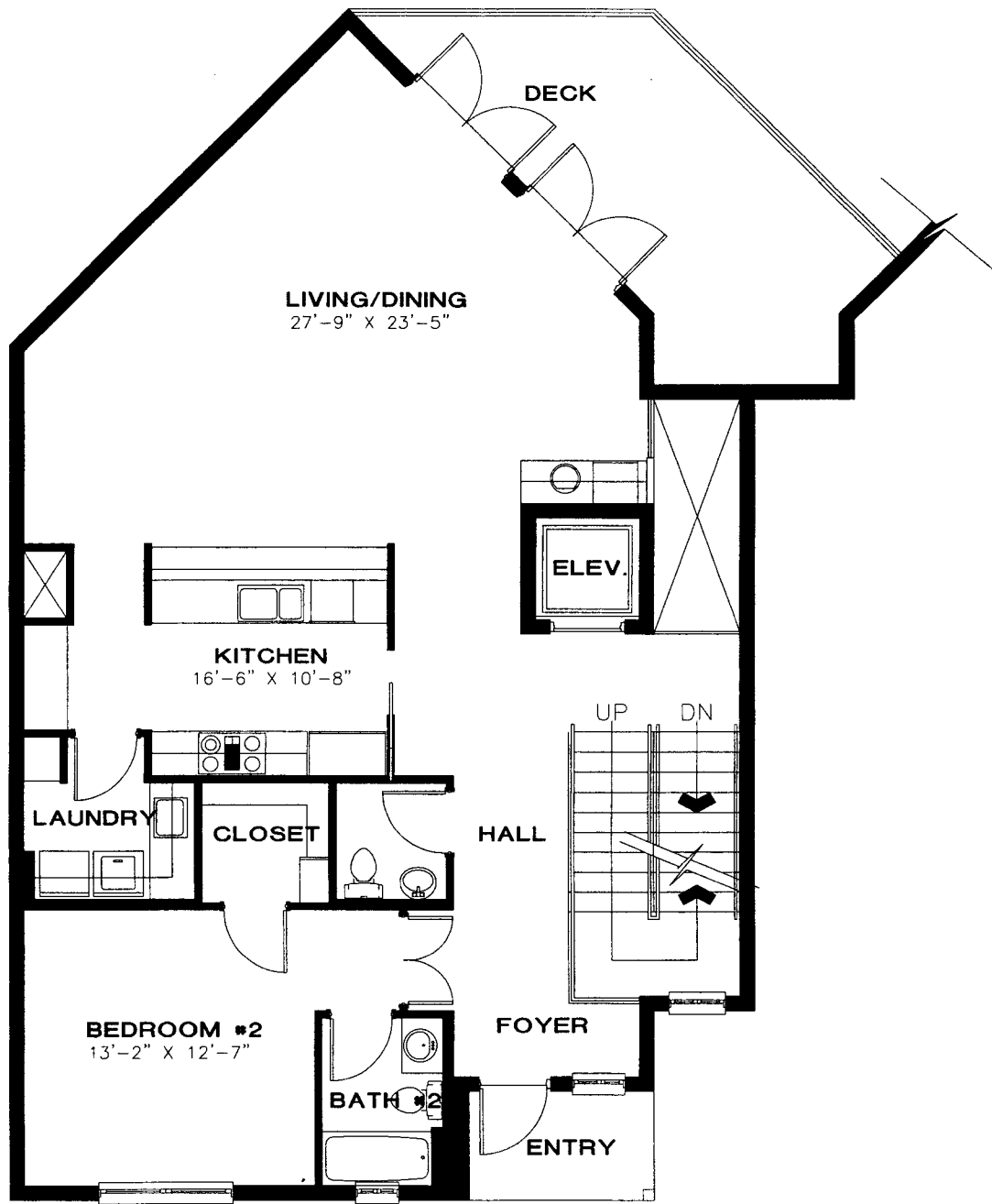


**1st FLOOR/GARAGE**

**SCALE 1/8" = 1'**

**ARCHITECTURAL  
NETWORK · INC**

**OLDE NAPLES SEAPORT UNIT "C"**  
NAPLES, FLORIDA

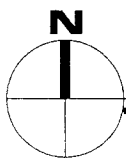
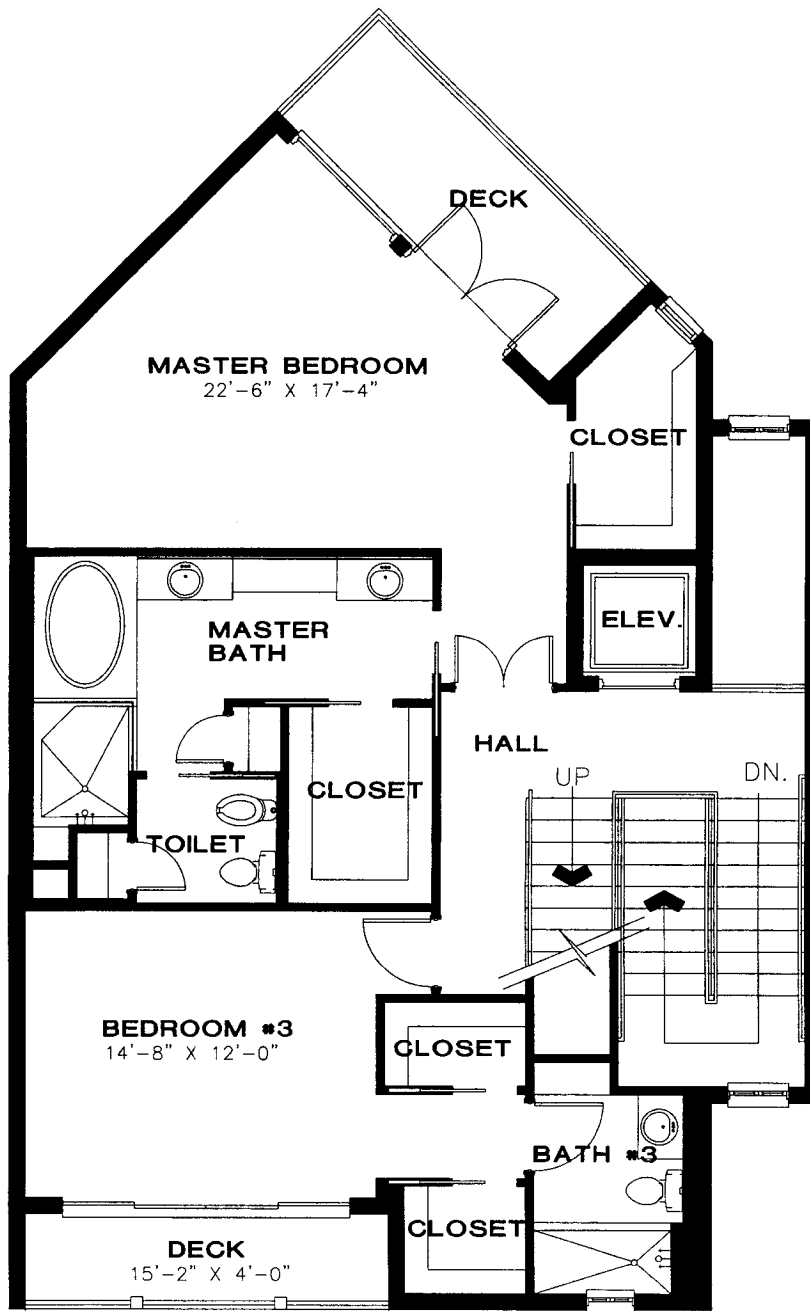


2nd FLOOR PLAN

SCALE 1/8" = 1'

**ARCHITECTURAL  
NETWORK · INC**

**OLDE NAPLES SEAPORT UNIT "C"**  
NAPLES, FLORIDA

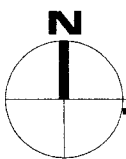
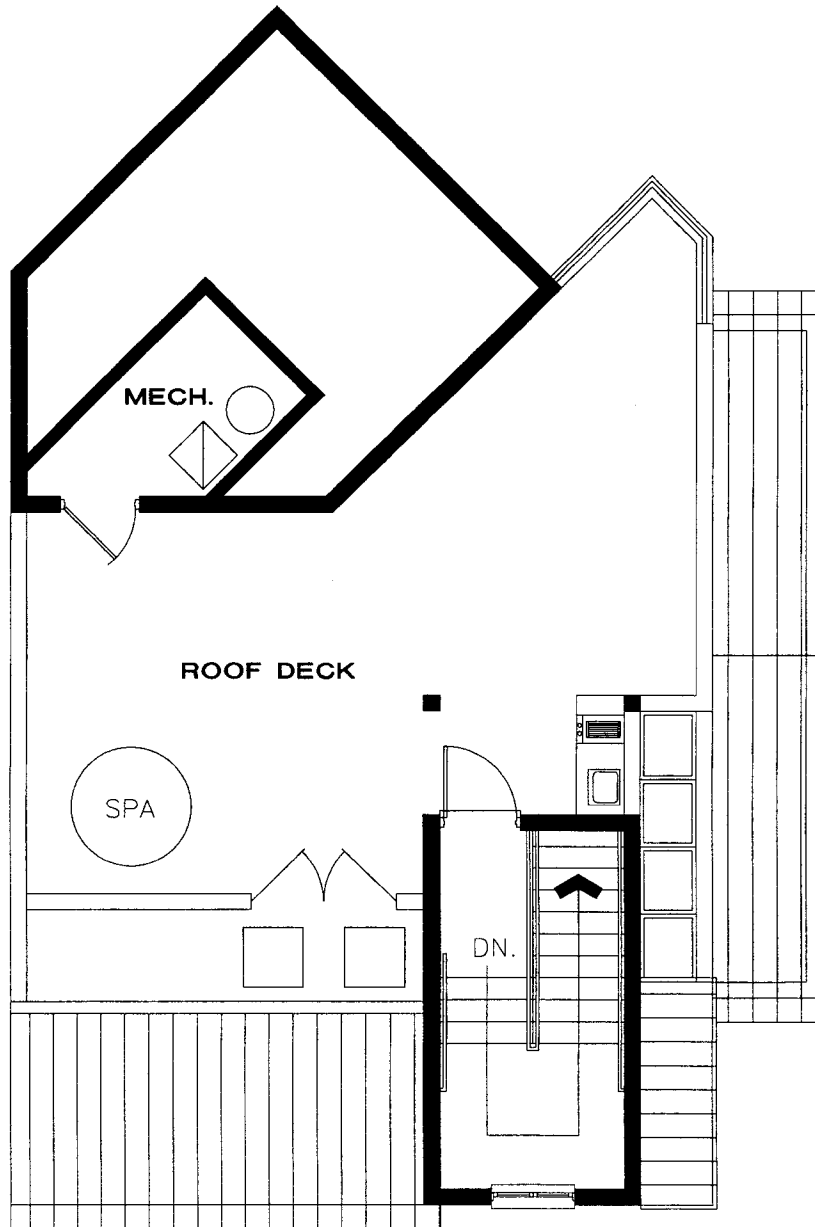


3rd FLOOR PLAN

SCALE 1/8" = 1'

**ARCHITECTURAL  
NETWORK · INC**

**OLDE NAPLES SEAPORT UNIT "C"**  
NAPLES, FLORIDA

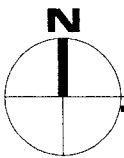
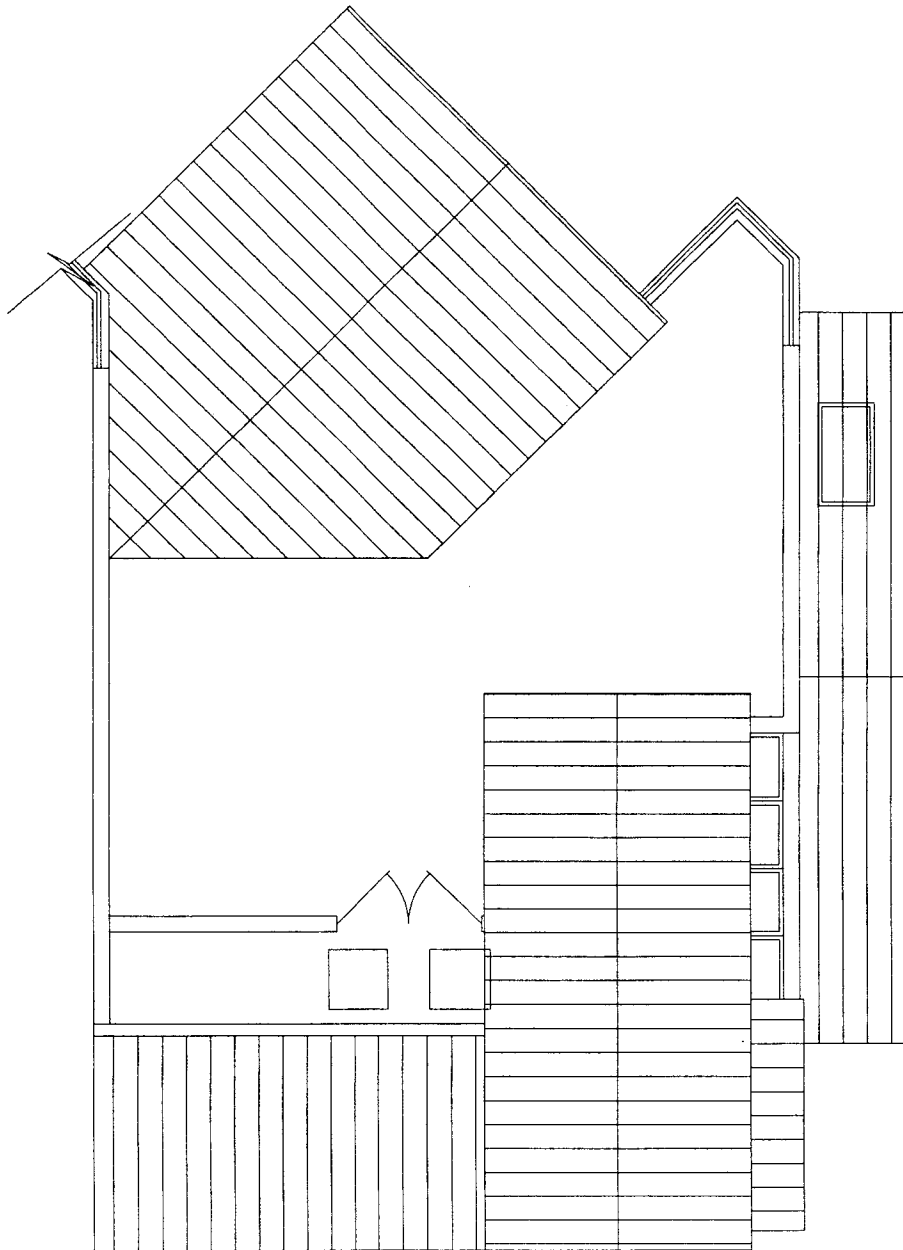


4th FLOOR PLAN

SCALE 1/8" = 1'

**ARCHITECTURAL**  
**NETWORK · INC**

**OLDE NAPLES SEAPORT UNIT "C"**  
NAPLES, FLORIDA



ROOF PLAN

SCALE 1/8" = 1'

**ARCHITECTURAL**  
**NETWORK · INC**

**OLDE NAPLES SEAPORT UNIT "C"**  
NAPLES, FLORIDA