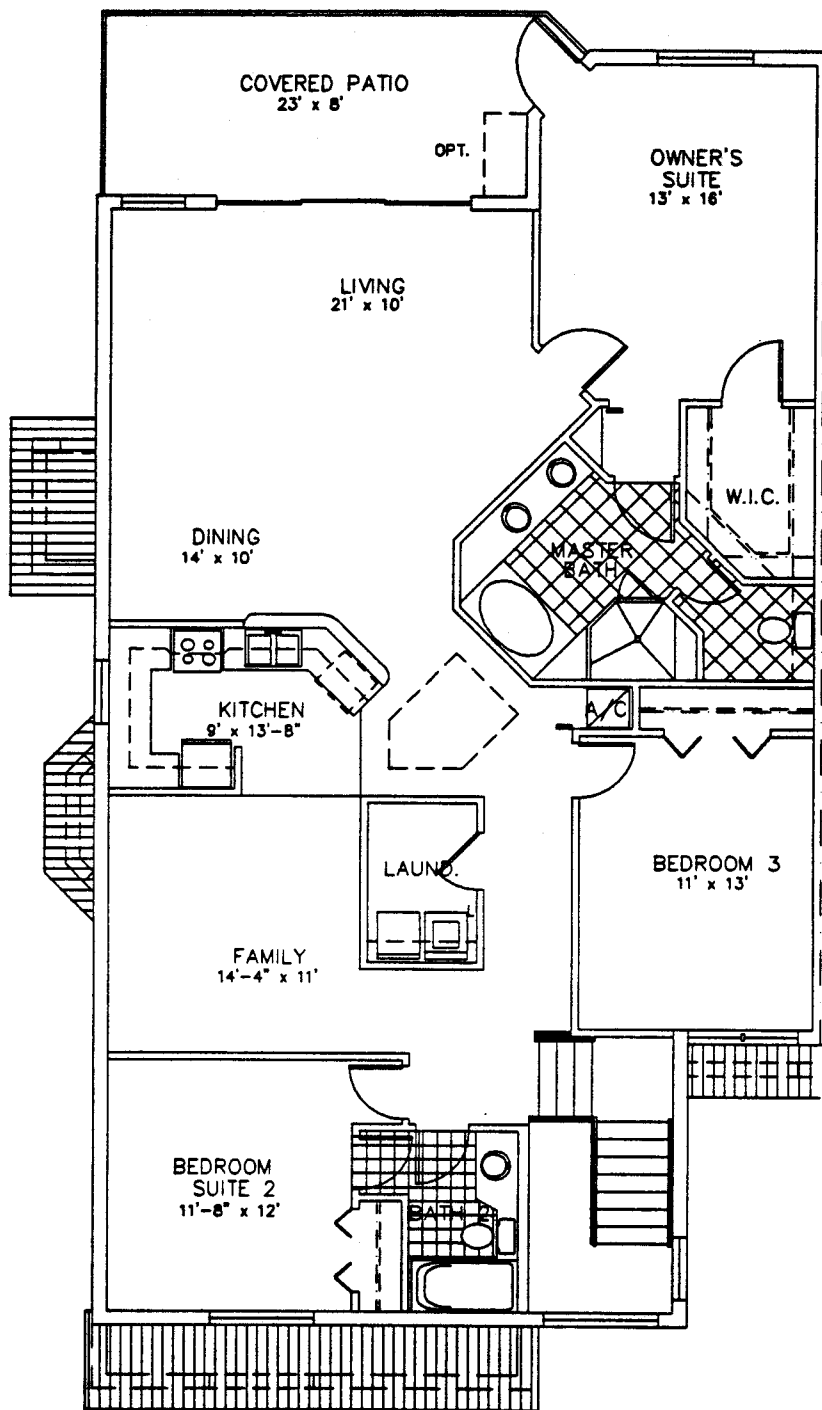


UNIT B2

GROSS AREA	1855 SF.
GARAGE	215 SF.
COVERED TERRACE	184 SF.

UNLESS INDICATED TO THE CONTRARY, ALL IMPROVEMENTS ARE PROPOSED AND MAY BE ALTERED BY THE DEVELOPER. FURTHER, ORAL PRESENTATIONS CANNOT BE RELIED UPON AS CORRECTLY STATING THE REPRESENTATIONS OF THE DEVELOPER. FOR CORRECT REPRESENTATIONS, REFERENCE SHOULD BE MADE TO THE DOCUMENTS REQUIRED BY SECTION 718.503, FLORIDA STATUTES.

L' AMBIANCE
OF
PELICAN BAY
GARDEN VILLA



UNIT B2

GROSS AREA	1855 SF.
GARAGE	215 SF.
COVERED TERRACE	184 SF.

UNLESS INDICATED TO THE CONTRARY, ALL IMPROVEMENTS ARE PROPOSED AND MAY BE ALTERED BY THE DEVELOPER. FURTHER, ORAL PRESENTATIONS CANNOT BE RELIED UPON AS CORRECTLY STATING THE REPRESENTATIONS OF THE DEVELOPER. FOR CORRECT REPRESENTATIONS, REFERENCE SHOULD BE MADE TO THE DOCUMENTS REQUIRED BY SECTION 718.503, FLORIDA STATUTES.

L' AMBIANCE
OF
PELICAN BAY
GARDEN VILLA