

# THE WOODBRIDGE

## Standard Luxury Features

### BATHROOMS AND PLUMBING

- Full Size Mirrors
- Quiet Exhaust Fans
- Cast Iron Guest Tub
- Kohler Portrait Water Closets (White or Almond)
- Moen Monticello Valves in Chrome
- 80-Gallon Water Heater With Recirculating Pump
- Chrome Shower Enclosures
- Whirlpool Master Tub
- Moen One Touch in Kitchen
- Four Hose Bibs

### CLOSETS

- Large Air-Conditioned Closets
- Large Closet Lighting
- Closet Shelving - See Allowance List

### CONCRETE

- 3,000-PSI Concrete Slab
- Five-Year Subterranean Termite Guarantee
- Pattern Concrete or Paver Driveway, Walk and Entry (See Allowance List)
- Pattern Concrete Pool Deck - See Allowance List

### ELECTRICAL

- Fans and Hanging Fixtures - See Allowance List
- Decora Switches and Outlets
- Up to Eight Telephone Outlets
- Up to Six Waterproof Electric Outlets
- Up to Six Television Outlets
- DSC Security With Three Keypads, Three Motion Detectors, Smoke Detectors, All Doors Contacted (No Windows)
- Nutone AM/FM Intercom With Door Chime, Six Ceiling and Six Wall Speakers, and Auxiliary Wired to Entertainment Center
- Two-Zone Minimum High Efficiency Air Conditioner

### EXTERIOR

- Landscaping - See Allowance List
- Fill, Excavation and Clean-up - See Allowance List
- Textured Stucco With Smooth Bands/Accents
- Two Coats of Paint (Two Colors)

### FLOOR COVERINGS

- Carpet, Floor and Wall Tile (All Areas) - See Allowance List

### GARAGE

- Finished Walls and Ceiling
- H & C Stained Concrete - Standard Colors
- Fluorescent Lights and Pull Down Ladder (With Decking Above)
- Clopay Steel Garage Door
- Genie Intellicode 1/3 HP Opener

### INTERIOR

- In-Wall Pesticide System
- 8-Foot Masonite Doors (Painted)
- Masonite Bifold Doors
- Mirrored Sliding Closet Doors in Guest Bedrooms
- 5-1/4-Inch Base and 3-1/2-Inch Casing (Painted)
- Hardcoated Walls and Ceiling - Smooth in Baths
- Paint - One Color Walls (Flat) and One Color Trim (Semi-Gloss Oil)

### INSULATION

- R-30 Batt Insulation - All Interior Ceilings
- R-11 Batt Insulation - All Exterior Walls and Living Areas for Sound Proofing (Where Baths Adjoin Living Areas)
- R-4 Foil on Exterior Block Walls

### KITCHEN AND LAUNDRY

- Appliances and Cabinetry - See Allowance List

### POOL AREA

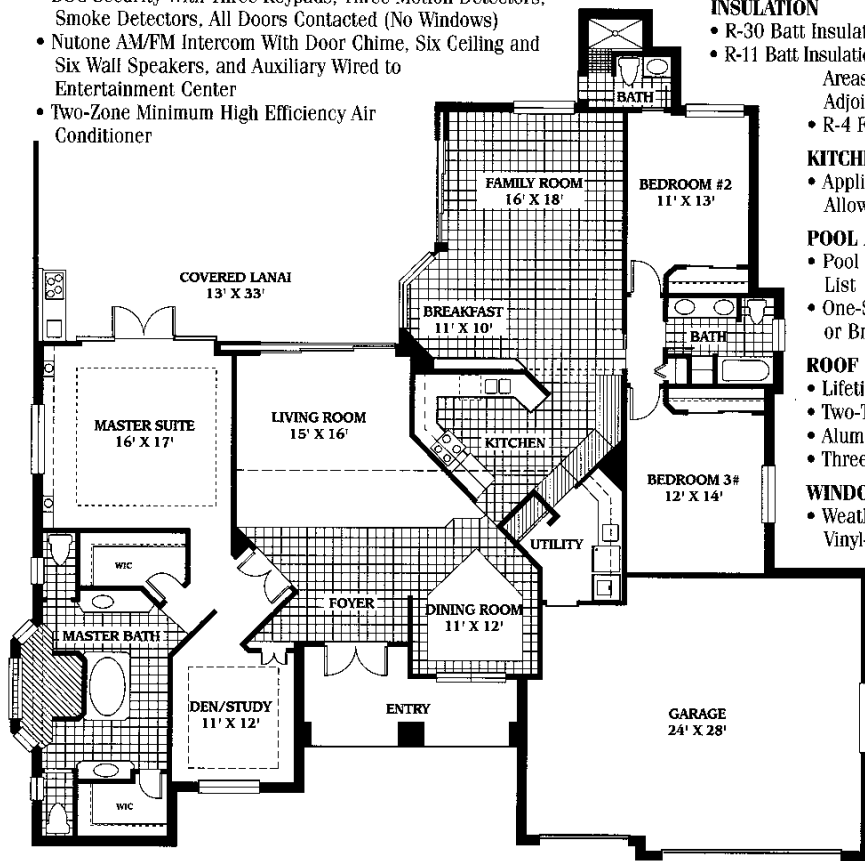
- Pool and Spa Package - See Allowance List
- One-Story Mansard Enclosure - in White or Bronze

### ROOF

- Lifetile - Standard Colors
- Two-Tier Cedar Facia
- Aluminum Soffits
- Three Roof Vents

### WINDOWS AND DOORS

- Weathershield Proshield Double-Hung Vinyl-Clad Wood Windows (Low E)
- Aluminum Sliders and Mitred Glass Windows
- Front Doors and Door Hardware - See Allowance List



LIVING AREA	2,841 S.F.
ENTRY	144 S.F.
COVERED LANAI	492 S.F.
GARAGE	535 S.F.
<b>TOTAL</b>	<b>4,012 S.F.</b>

All dimensions, features and specifications are approximate and subject to change and or field variations.

ORAL REPRESENTATIONS CANNOT BE RELIED UPON AS CORRECTLY STATING REPRESENTATIONS OF THE DEVELOPER. FOR CORRECT REPRESENTATIONS, MAKE REFERENCE TO THIS BROCHURE AND TO THE DOCUMENTS REQUIRED BY SECTION 718.503, FLORIDA STATUTES, TO BE FURNISHED BY A DEVELOPER TO A BUYER OR LESSEE.