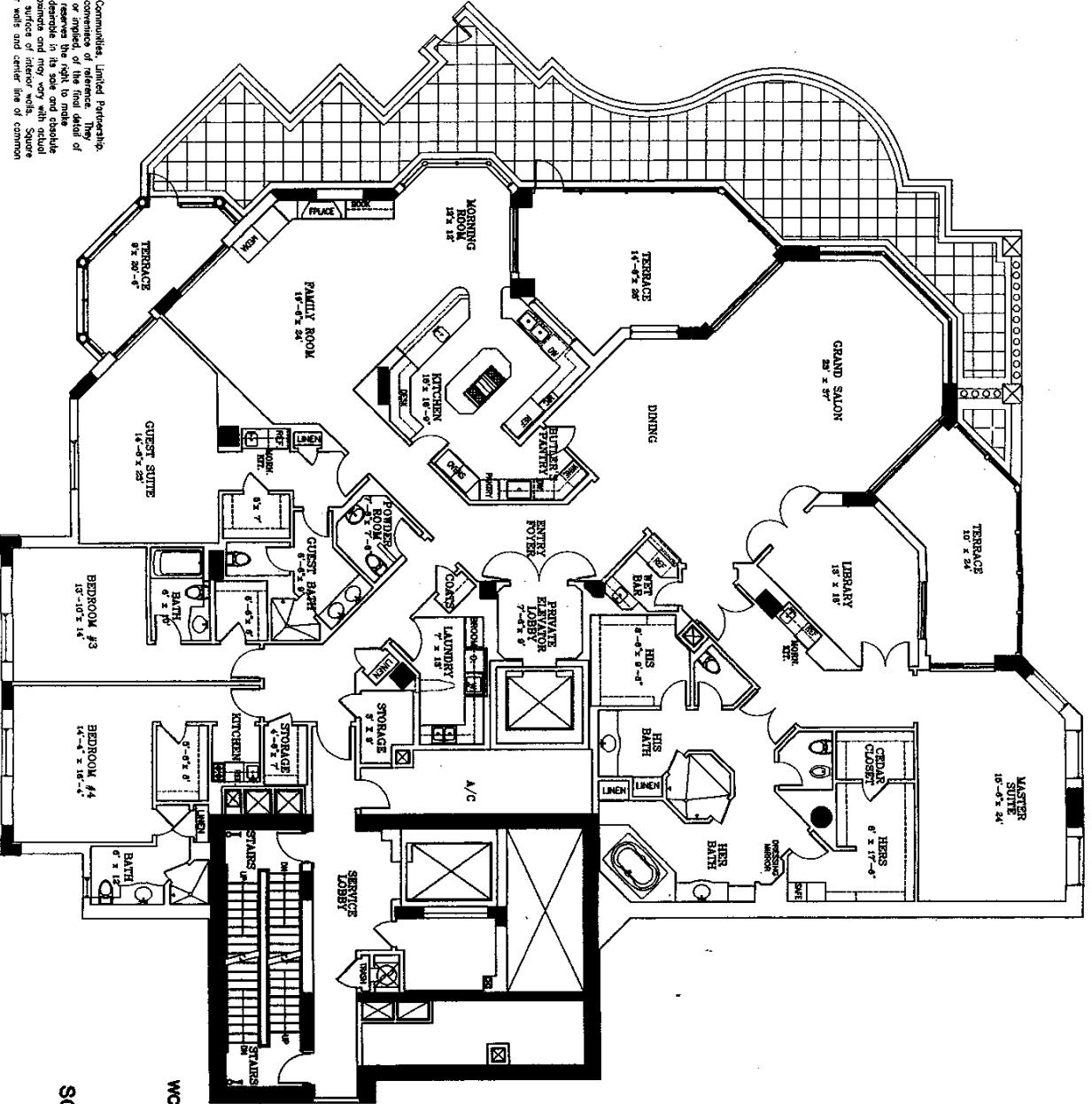


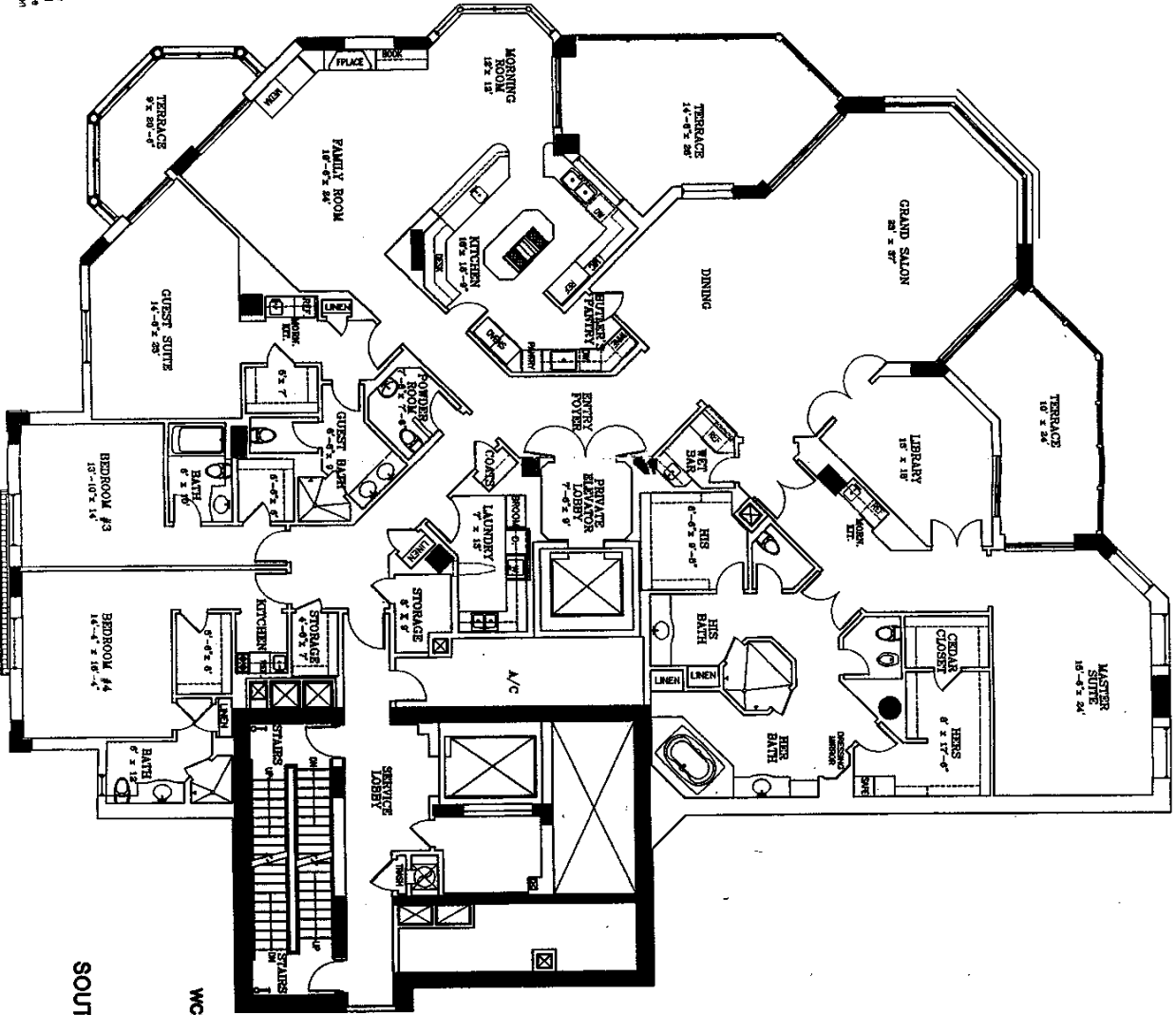
\* Windsor at Bay Colony is a development of WCI Communities, Limited Partnership, and drawings are conceptual only and are for the convenience of reference. They are not to be used for construction purposes. The developer assumes the right to make modifications, revisions and changes which it deems desirable in its sole and absolute discretion. Dimensions and square footage are approximate and may vary with actual reduction. Dimensions are measured from interior surfaces of interior walls. Square footage is measured from exterior surfaces of exterior walls and center line of common walls.



**THE WINDSOR**  
 AT BAY COLONY  
 WCI COMMUNITIES, LIMITED PARTNERSHIP  
 01 APRIL 1996

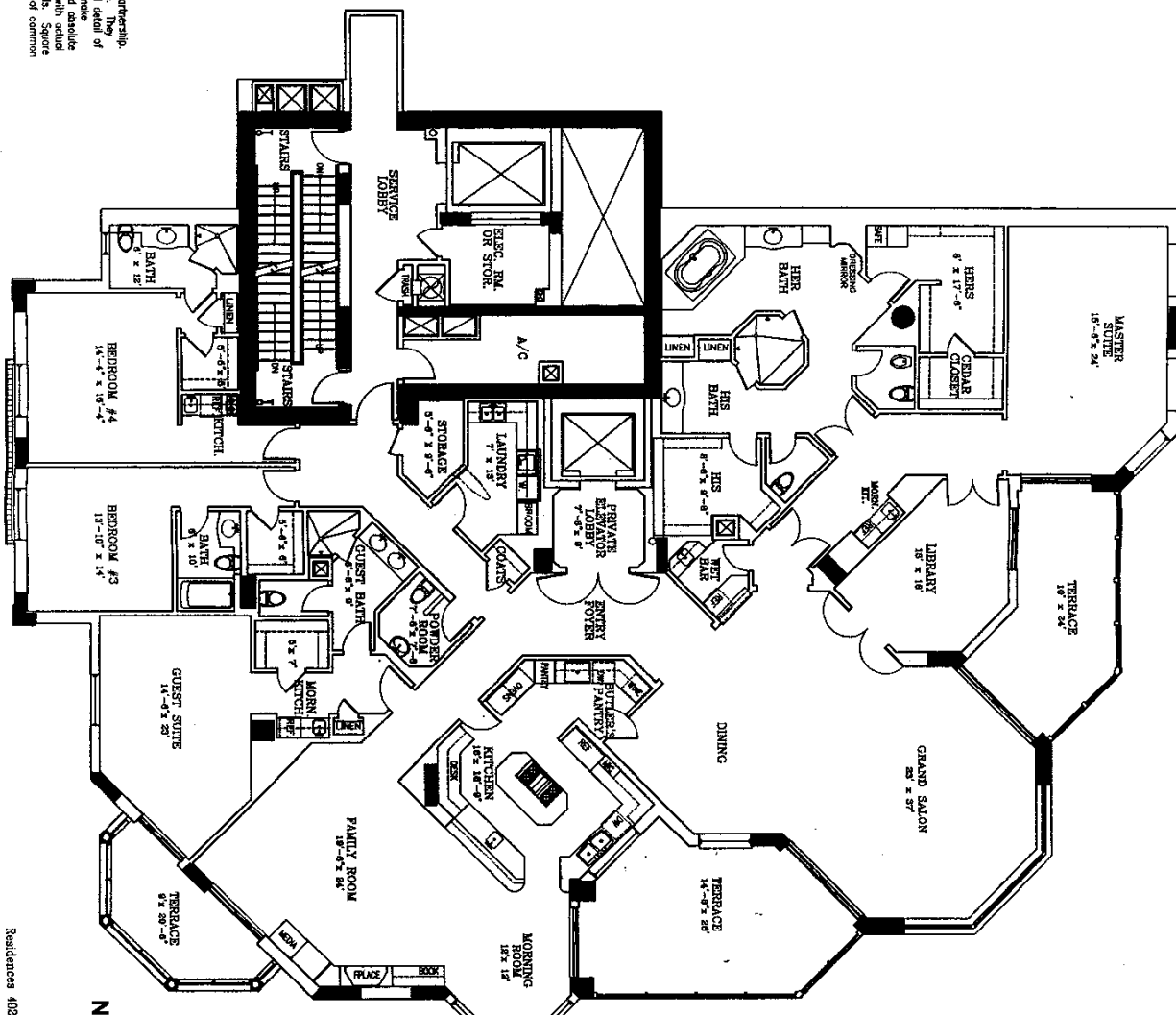
**SOUTH RESIDENCE LEVELS 201**  
 ENCLOSED AREA 6,155 Square Feet  
 TERRACE AREA 1,850 Square Feet  
 TOTAL RESIDENCE 8,005 Square Feet

as holder of Bay Colony is a development of WCI Communities, Limited Partnership, and the developer of the project. The developer warrants that the information contained herein is true and correct as of the date of this plan. The developer expressly reserves the right to make modifications, amendments and changes which it deems desirable in its sole and absolute discretion. Dimensions and square footage are approximate and may vary with actual construction. Dimensions are measured from interior surfaces of interior walls, unless otherwise indicated. Dimensions are measured from exterior surfaces of exterior walls and center line of common areas.



**THE WINDSOR**  
 AT BAY COLONY  
 WCI COMMUNITIES, LIMITED PARTNERSHIP  
 01 APRIL 1996

**SOUTH RESIDENCE LEVELS 301 - 14**  
 ENCLOSED AREA 6,155 Square Feet  
 TERRACE AREA 760 Square Feet  
 TOTAL RESIDENCE 6,915 Square Feet



1. Windsor at Bay Colony is a development of WCI Communities, Limited Partnership. The drawings are conceptual only and are for the convenience of reference. They should not be relied upon as representation, express or implied, of the final detail of a Windsor at Bay Colony. The developer expressly reserves the right to make modifications, revisions and changes which it deems desirable in its sole and absolute discretion. Dimensions and square footages are approximate and may vary with actual construction. All dimensions are measured from exterior walls and center line of common walls.

Residences 402, 702, 802, 902

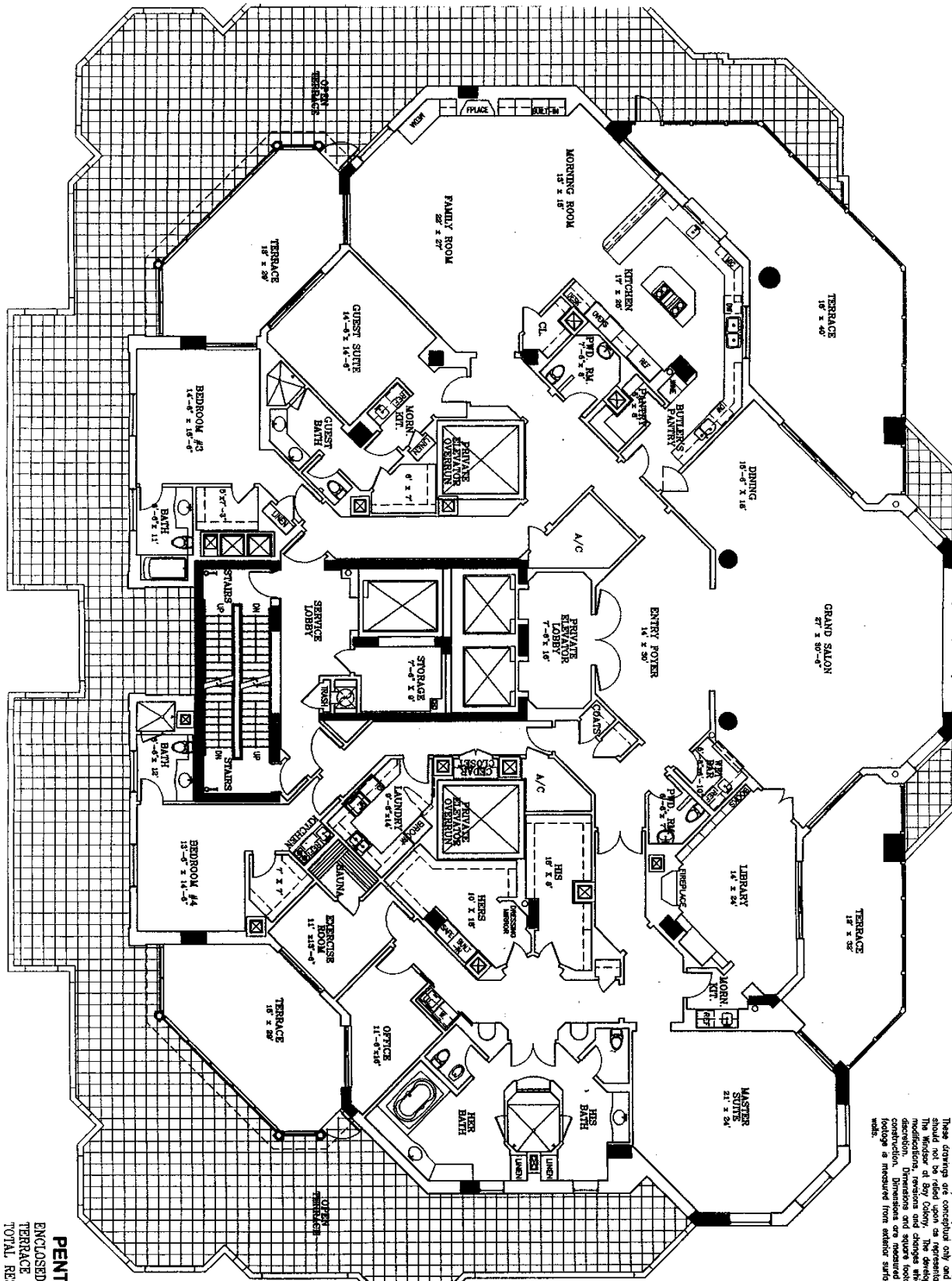
have an additional 90 square foot storage

**NORTH RESIDENCE LEVELS 202 - 1402**

ENCLOSED AREA 6,095 Square Feet  
 TERRACE AREA 760 Square Feet  
 TOTAL RESIDENCE 6,845 Square Feet

**THE WINDSOR**  
 AT BAY COLONY  
 WCI COMMUNITIES, LIMITED PARTNERSHIP  
 01 APRIL 1996



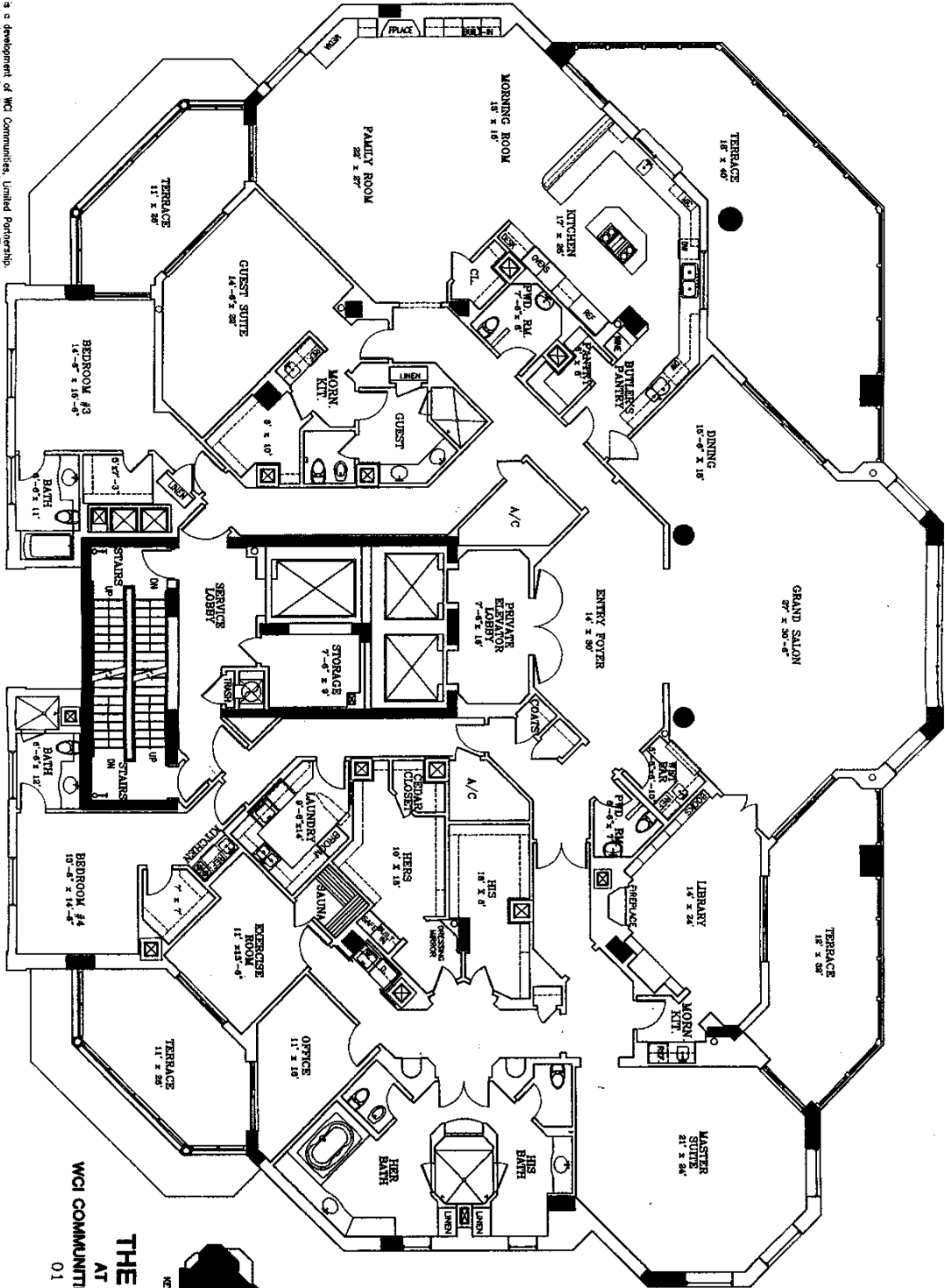


100 percent of any liability to the maximum extent permitted by law. These drawings are conceptual only and are for the convenience of reference. They should not be relied upon as representation, express or implied, of the final design of the Windsor at Bay Colony. The developer expressly reserves the right to make modifications, revisions and changes which it deems desirable in its sole and absolute discretion. Dimensions are measured from interior surfaces of interior walls. Square footage is measured from exterior surfaces of exterior walls and ceiling line of common walls.

**PENTHOUSE LEVEL 15**  
 ENCLOSED AREA 8,375 Square Feet  
 TERRACE AREA 5,630 Square Feet  
 TOTAL RESIDENCE 14,005 Square Feet

**THE WINDSOR**  
 AT BAY COLONY  
 WCI COMMUNITIES,  
 LIMITED PARTNERSHIP  
 01 APRIL 1996



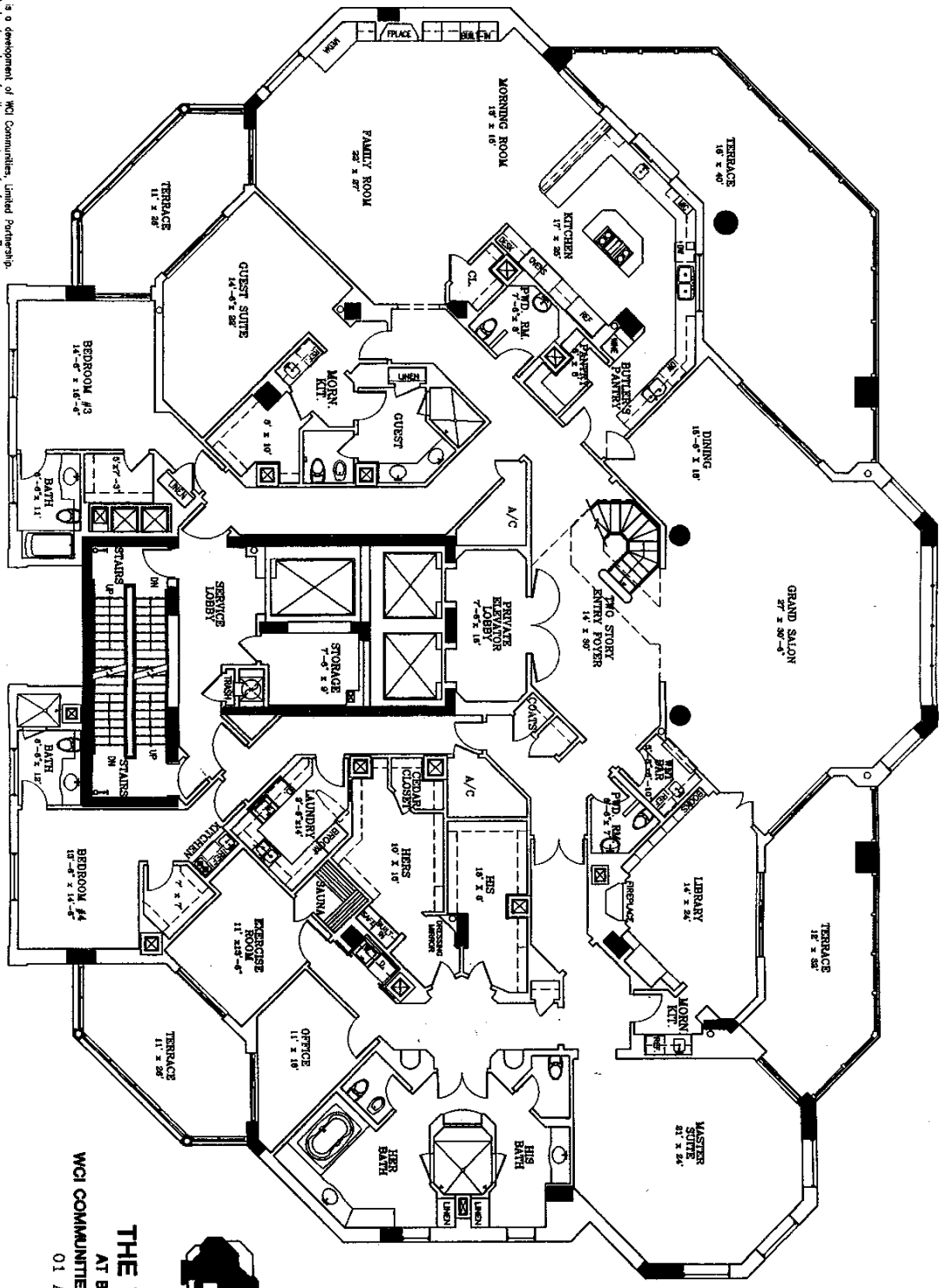


door at Bay Colony is a development of WCI Communities, Limited Partnership. Drawings are conceptual only and are for the convenience of reference. They are not to be relied upon as representation, express or implied, of the final detail of construction or of any other aspect of the project. The developer expressly reserves the right to make changes to the drawings and specifications without notice and without liability. Dimensions are measured from interior surfaces of interior walls. Square footage is measured from exterior surfaces of exterior walls and center line of common



**THE WINDSOR**  
 AT BAY COLONY  
 WCI COMMUNITIES, LIMITED PARTNERSHIP  
 01 APRIL 1996

**PENTHOUSE LEVELS 16-20**  
 ENCLOSED AREA 8,550 Square Feet  
 TERRACE AREA 1,560 Square Feet  
 TOTAL RESIDENCE 10,110 Square Feet



under at Bay Colony is a development of WCI Communities, United Partnership. Drawings are conceptual only and are for the convenience of reference. They are not to be relied upon as representation, express or implied, of the final detail of construction. The developer expressly reserves the right to make changes to the drawings without notice. Dimensions and space include any approximate and may vary with actual construction. Dimensions are measured from interior surface of interior walls. Square feet is measured from exterior surface of exterior walls and center line of common



**THE WINDSOR**  
 AT BAY COLONY  
 WCI COMMUNITIES, LIMITED PARTNERSHIP  
 01 APRIL 1996

**PENTHOUSE LEVEL 21**  
 ENCLOSED AREA 8,850 Square Feet  
 TERRACE AREA 2,350 Square Feet  
 TOTAL RESIDENCE 11,200 Square Feet