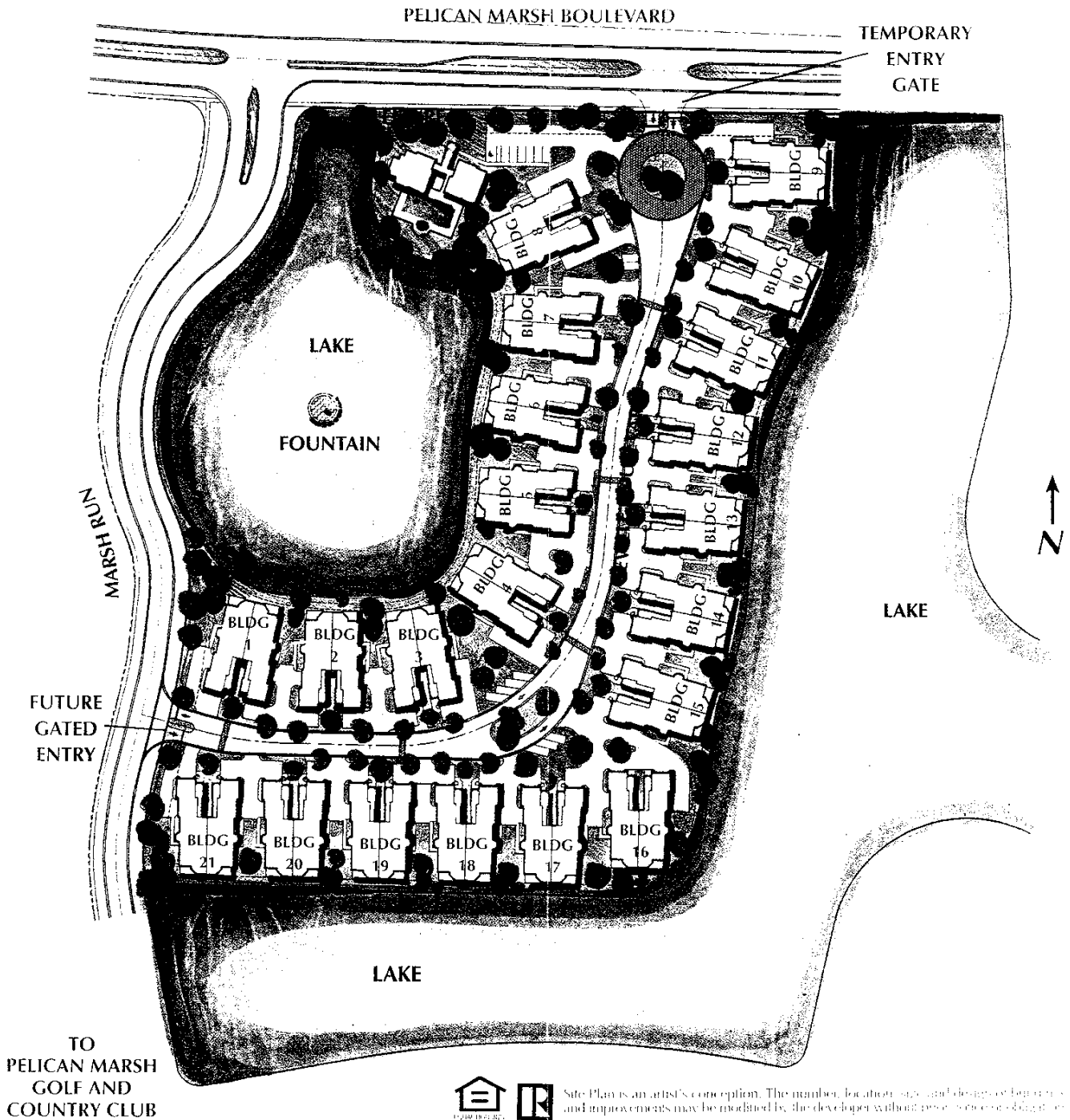


THE SEVILLE
At Pelican Marsh

NAPLES, FLORIDA



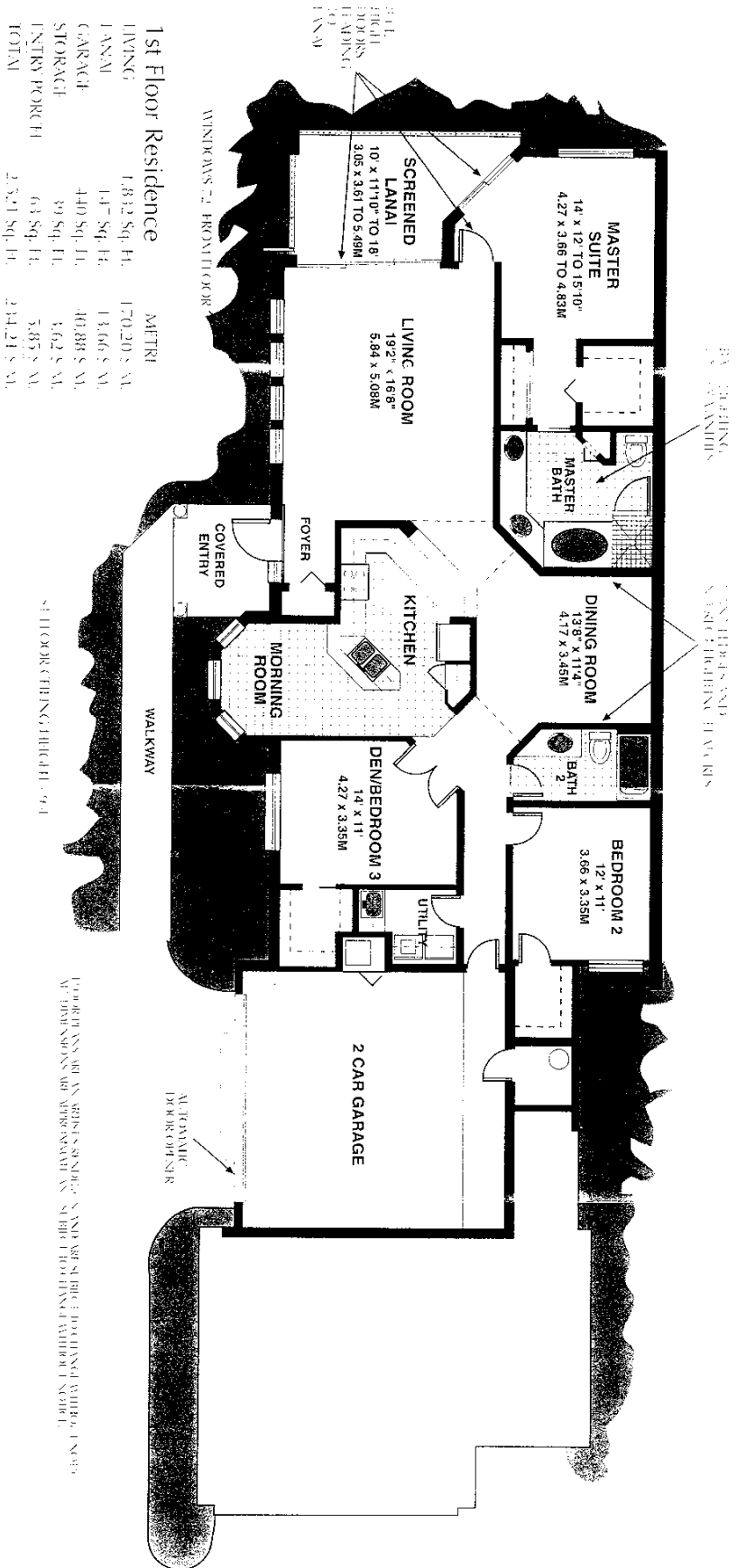
TO
PELICAN MARSH
GOLF AND
COUNTRY CLUB



Site Plan is an artist's conception. The number, location, size, and design of buildings and improvements may be modified by the developer without notice or obligation.

ORAL REPRESENTATIONS CANNOT BE RELIED UPON AS CORRECTLY STATING REPRESENTATIONS OF THE DEVELOPER. FOR CORRECT REPRESENTATIONS, MAKE REFERENCE TO THIS BROCHURE AND TO THE DOCUMENTS REQUIRED BY SECTION 718.503, FLORIDA STATUTES, TO BE FURNISHED BY A DEVELOPER TO A BUYER OR LESSEE.

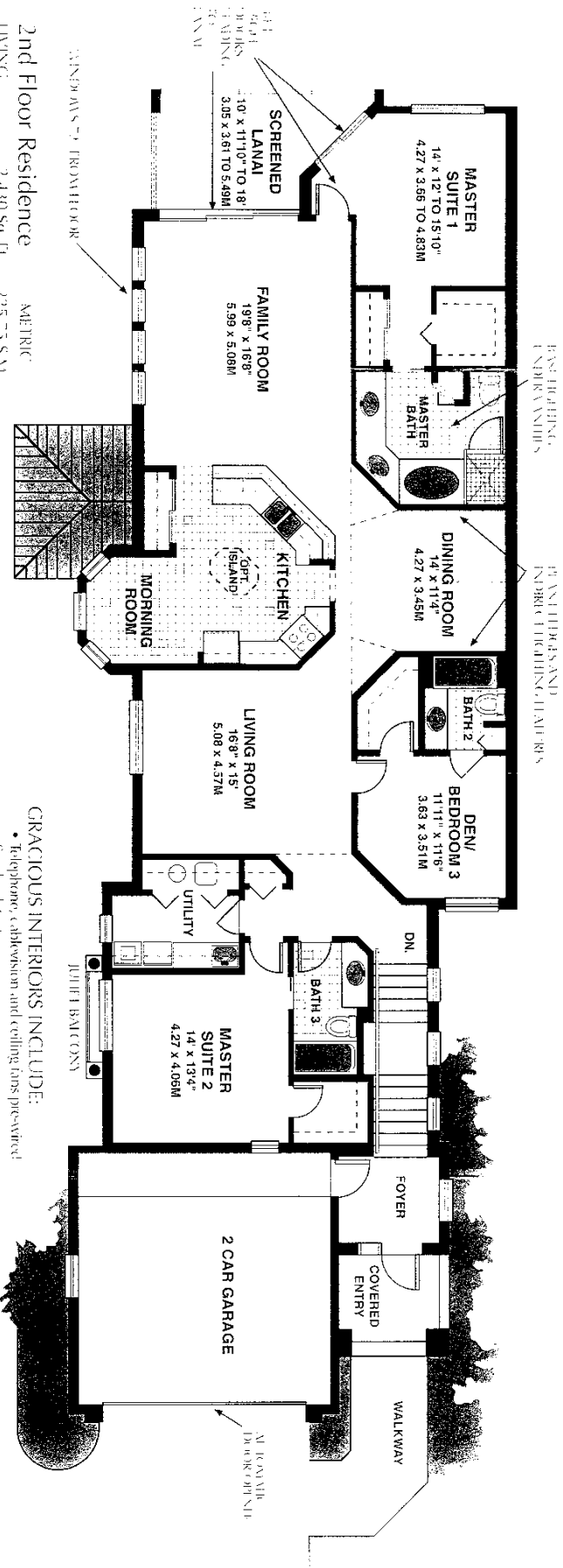
1st Floor Residence



1st Floor Residence		METRI	
LIVING	1,812 Sq. Ft.	170.20 S. M.	
LANAI	1,478 Sq. Ft.	136.6 S. M.	
GARAGE	440 Sq. Ft.	40.88 S. M.	
STORAGE	39 Sq. Ft.	3.62 S. M.	
ENTRY PORCH	63 Sq. Ft.	5.87 S. M.	
TOTAL	2,831 Sq. Ft.	261.21 S. M.	

FOR MORE INFORMATION, PLEASE CONTACT THE SALES OFFICE AT THE DEVELOPER'S OFFICE.

2nd Floor Residence



2nd Floor Residence		METRIC	
LIVING	2,140 Sq. Ft.	225.73 S.M.	
LANAI	147 Sq. Ft.	13.66 S.M.	
GARAGE	435 Sq. Ft.	40.41 S.M.	
ENTRY PORCH	70 Sq. Ft.	6.50 S.M.	
TOTAL	3,082 Sq. Ft.	286.32 S.M.	

2nd Floor Ceiling: Vaulted to 15'

GRACIOUS INTERIORS INCLUDE:

- Telephone, cablevision and ceiling fans pre-wired
- Sprinkler detector
- High efficiency central heating and air conditioner system with humidistat
- 6-paned doors with brass hardware

CONVENIENT LAUNDRY ROOM:

- General Electric large capacity washer and dryer
- Laundry tub and ironing counter top
- Raised-panel cabinets

DECORATOR DESIGNED BATHROOMS:

- Ceramic tile shower and flooring
- Granite tile shower and flooring

GOURMET KITCHENS:

- Indirect lighting
- Duette General Electric white-enamel appliance. Side-by-side refrigerator with icemaker and water dispenser. Self-heating oven and range. Built-in microwave oven. Built-in dishwasher and disposal
- 4 granite counter tops
- Numerous raised-panel cabinets
- Checker of white on oak
- White porcelain dual compartment sink