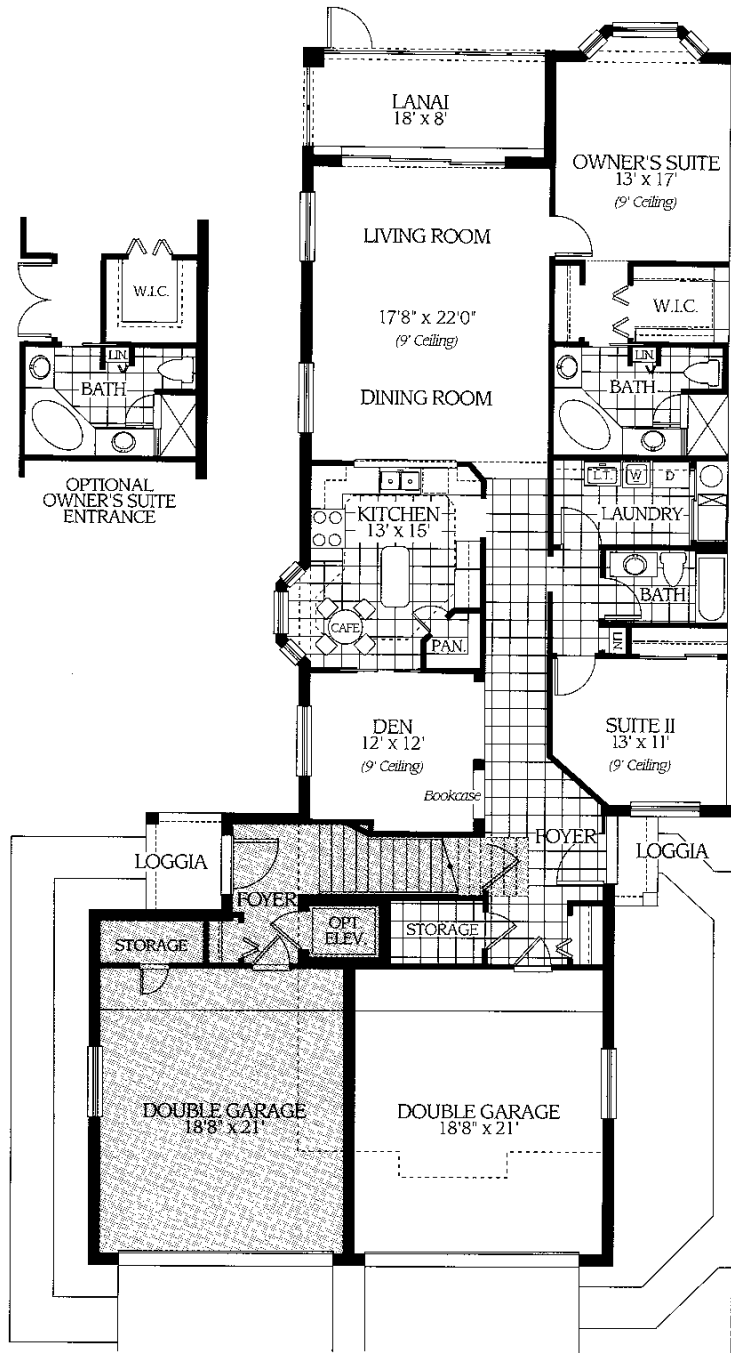


MYSTIC GREENS
 The Oakmont



FIRST FLOOR

LIVING AREA	1,380 S.F.
LANAI	144 S.F.
GARAGE	126 S.F.
LOGGIA	22 S.F.
TOTAL	2,472 S.F.

All dimensions, features and specifications are approximate and subject to change and or field variations.
 ORAL REPRESENTATIONS CANNOT BE RELIED UPON AS CORRECTLY STATING REPRESENTATIONS OF THE DEVELOPER. FOR CORRECT REPRESENTATIONS, MAKE REFERENCE TO THIS BROCHURE AND TO THE DOCUMENTS REQUIRED BY SECTION 718.503, FLORIDA STATUTES, TO BE FURNISHED BY A DEVELOPER TO A BUYER OR LESSEE.