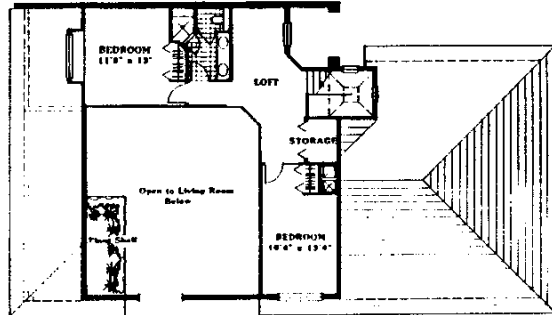


W I N D S T A R

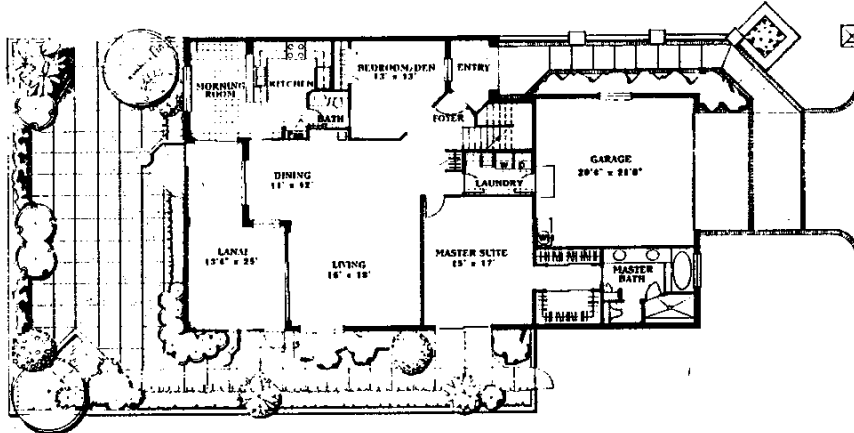
ON NAPLES BAY



The Legend

4 Bedroom/Den, Loft,
2½ Bath

LIVING AREA 2,611 Sq. Ft.
LANAI 287 Sq. Ft.
GARAGE 469 Sq. Ft.
TOTAL 3,367 Sq. Ft.



Address: Somerset — The Legend Paget Circle, Unit #	Bedrooms: 4/Den Baths: 2½	Price \$239,900 — \$264,900
--	------------------------------	--------------------------------

Own's Name	W S Realty, Inc.	Sq. Ft. L.A.	2611	Living Rm.	16'0" x 18'0"
Taxes		Sq. Ft. T.A.	3367	Dining Rm.	11'0" x 12'0"
Homestead	No	Construction	CBS	Kitchen	12'0" x 13'3"
Year Built	1989 / 1990	Lot Size	As per plat	Bkfst. Nook	12'11" x 8'5"
Maintenance	qtr. \$689.	View	Golf / Lake / Courtyard	Bedroom 1	15'0" x 17'0"
Financing	*See below	Roof	Concrete tile	Bedroom 2	11'8" x 13'0"
Possession	At closing	Stories	2	Bedroom 3	10'4" x 13'4"
Appliances	Range / Oven	Parking	2 car garage	Bedroom 4/Den	13'0" x 13'0"
	Refrigerator / Dishwasher	Floor Cover	N/A	Utility Rm.	Yes
	Washer / Dryer	Windows	Aluminum	Lanai	13'4" x 25'0"
	A/C / Heater	Draperies	N/A	School District	Lely High School
Water	City	Pool	Community		Gulfview Middle
Sewer	County	Spa	Community hot tub		Avalon Elementary
Zoning	Multi-family — att. villa		Home owners assoc.	Lease Restrictions	3 times per year, 30 day min.

Special Features/Additional Copy:

*Special financing: 5% down, no points, to qualified buyers.

All information and specifications obtained from sources deemed to be reliable but are not guaranteed by W S Realty, Inc. Buyer should consider using an inspection service company to inspect the condition of the premises. The dimensions, sizes, configurations and other information contained on this drawing are approximate and meant to be illustrative only.

Lodestone Realty Mgmt., Inc. Licensed Real Estate Brokerage