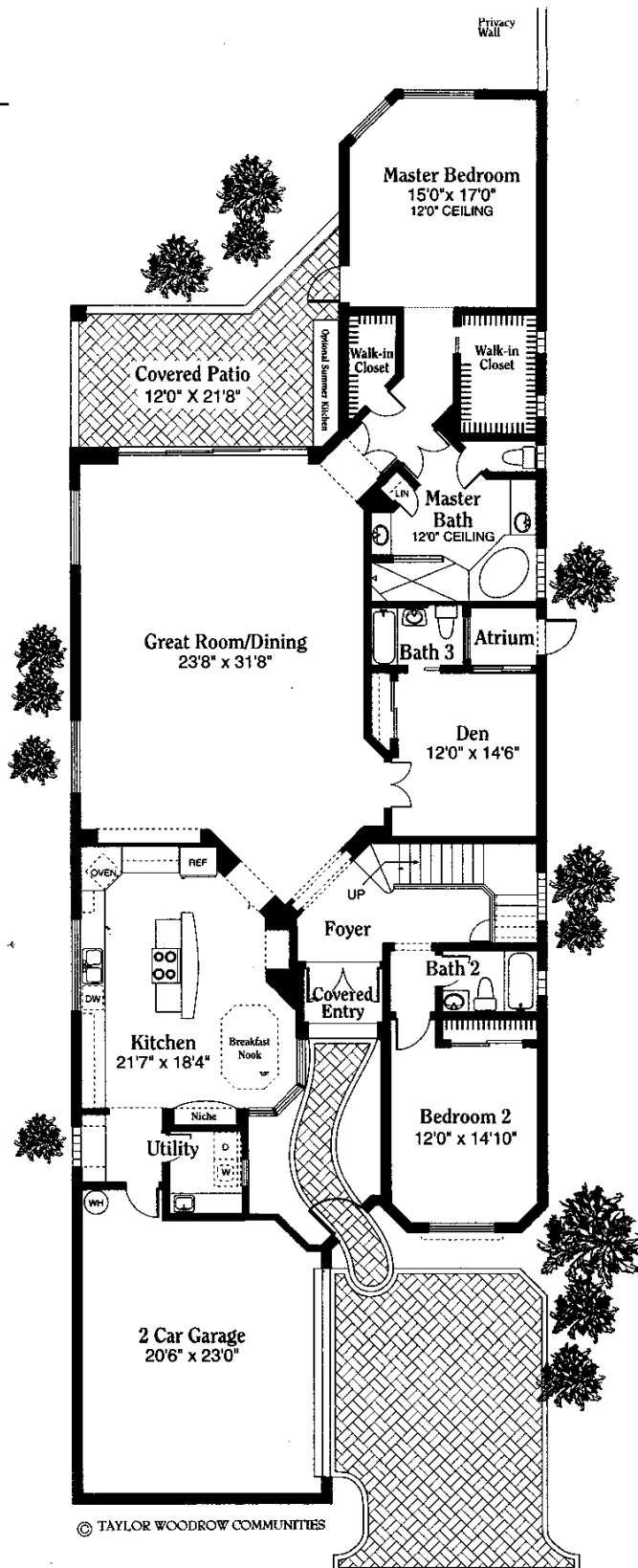
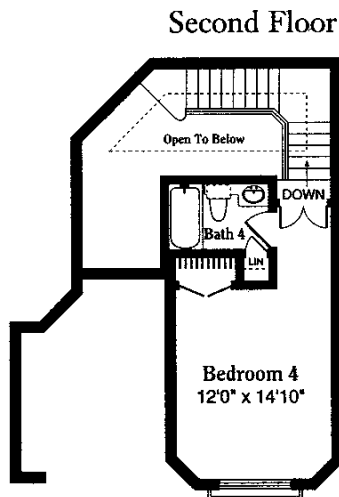


# THE BARDINI II

by Taylor Woodrow Communities

First Floor	
Living Area A/C	2,957 sq. ft.
Second Floor	
Living Area A/C	335 sq. ft.
Garage	556 sq. ft.
Covered Entry	36 sq. ft.
Covered Patio/Lanai	269 sq. ft.
<b>Total A/C Area</b>	<b>3,292 sq. ft.</b>
<b>Total Under Roof</b>	<b>4,153 sq. ft.</b>



## PORTOFINO

AT PELICAN MARSH

1354 Via Portofino, Naples, Florida 34108  
 (941) 594-5911 or 1-800-644-9386 • Fax (941) 594-5108  
 A Taylor Woodrow Community • <http://www.taylorwoodrowhomes.com>

Prices and features subject to change without notice. Offer void where prohibited by law. Broker cooperation welcomed. These drawings are conceptual only and are for the convenience of reference. They should not be relied upon as representation, express or implied, of the final detail. The developer expressly reserves the right to make modifications, revisions, and changes which it deems desirable in its sole and absolute discretion.

