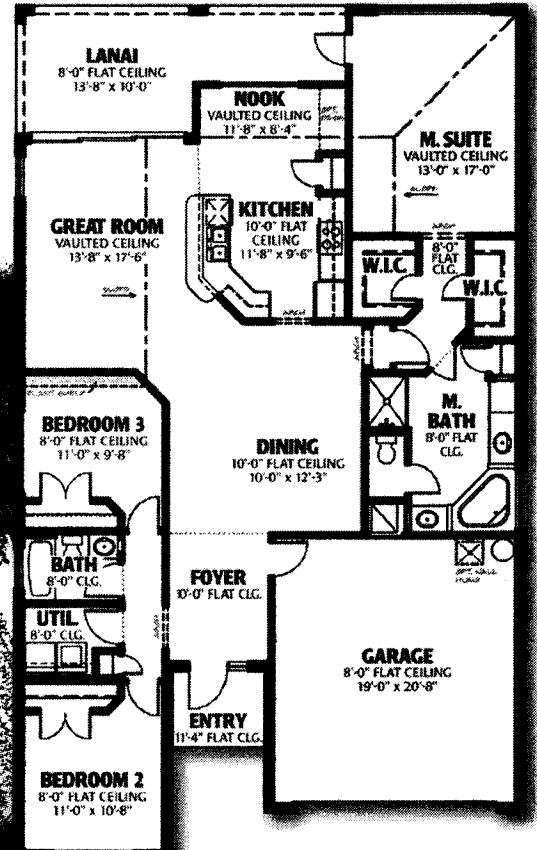


The Windsor is a 3BR/2BA, 2-Car Garage floor plan that's designed for easy living. Entertaining is a breeze with a formal dining room and a kitchen that's open to the breakfast nook and separate great room overlooking the lanai. The house pampers its owners with two walk-in closets, a magnificent master bath and a private entry door leading to the lanai.

THE WINDSOR

1,825 sq. ft. Under Air

from the \$160's



BZH
Listed
NYSE

www.beazer.com