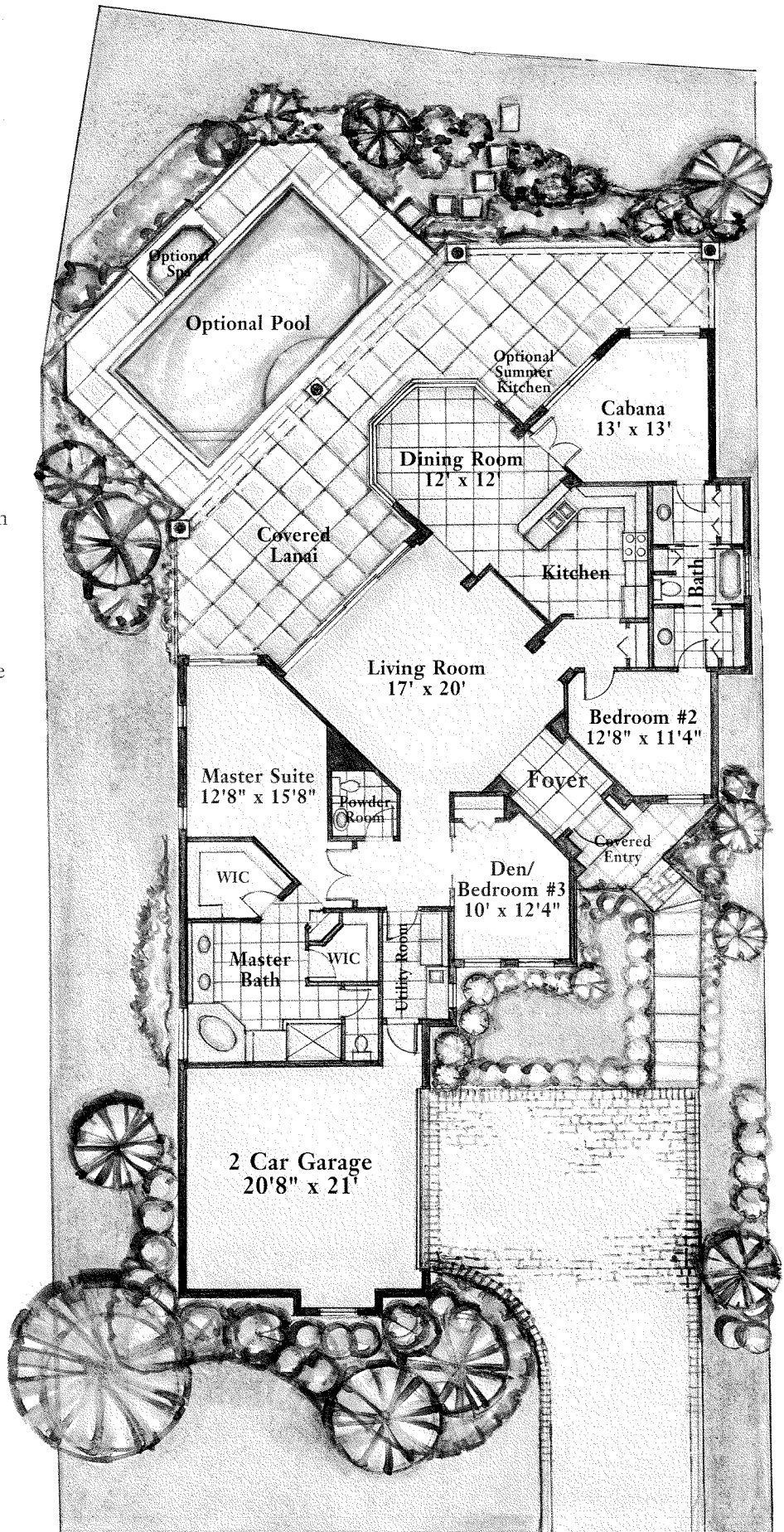


Villa Cordoba

Living Area	2,200 sq.ft.
Covered Entry	23 sq.ft.
Covered Lanai	656 sq.ft.
Garage	490 sq.ft.
Total	3,369 sq.ft.

Villa Features

- Dramatic foyer entry enhanced with 8' high sliding glass doors in living room
- Elegant entry door with distinctive column features
- Custom kitchen cabinetry and pantry with Corian tops overlooking the terrace and pool area
- Comparative white on white appliance package
- Dining room with five sided glass bay window overlooking courtyard
- Second bedroom with private bath
- Powder room adjacent to living room
- Master suite with two walk-in closets with double shelving
- Full sized utility room with built-in cabinetry, sink and natural light
- Double doors off master suite vestibule lead into private study
- Cabana guest suite with private entry off pool area, private bath
- Side entry two car garage




Terramar
at Olde Cypress