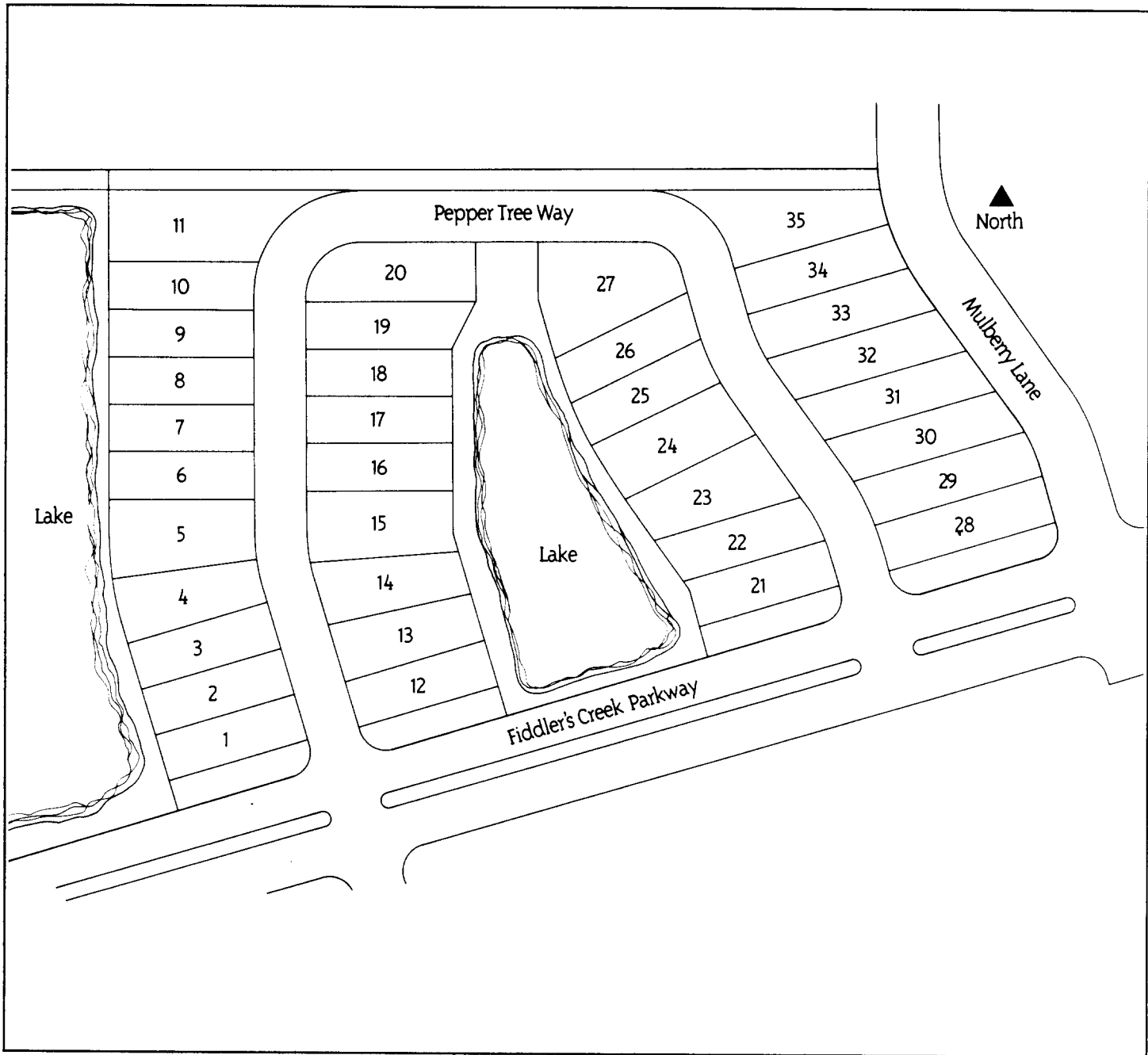


# The Village of Pepper Tree



Site Plan is for conceptual purposes only, and is subject to change without notice.



**Fiddler's Creek**  
A Gulf Bay Community<sup>SM</sup>

This Site Plan for the development of the Village of Pepper Tree at Fiddler's Creek represents the current plan of the Developer, GBFC Development Joint Venture. This Site Plan is subject to change without notice as a result of changing market conditions, requirements of governmental agencies, and buyers' expectations and needs. As this plan is conceptual in nature, it is not to scale, does not disclose all easements, reservations or limitations of record. This Site Plan is neither a zoning map nor engineered survey of Pepper Tree, but serves only as the Developer's guidelines for development, until next revised.

ORAL REPRESENTATIONS CANNOT BE RELIED UPON AS CORRECTLY STATING REPRESENTATIONS OF THE DEVELOPER. FOR CORRECT REPRESENTATIONS, MAKE REFERENCE TO THE PURCHASE AGREEMENT AND TO THE DOCUMENTS REQUIRED BY SECTION 718.503, FLORIDA STATUTES, TO BE FURNISHED BY A DEVELOPER TO A BUYER OR LESSEE.

