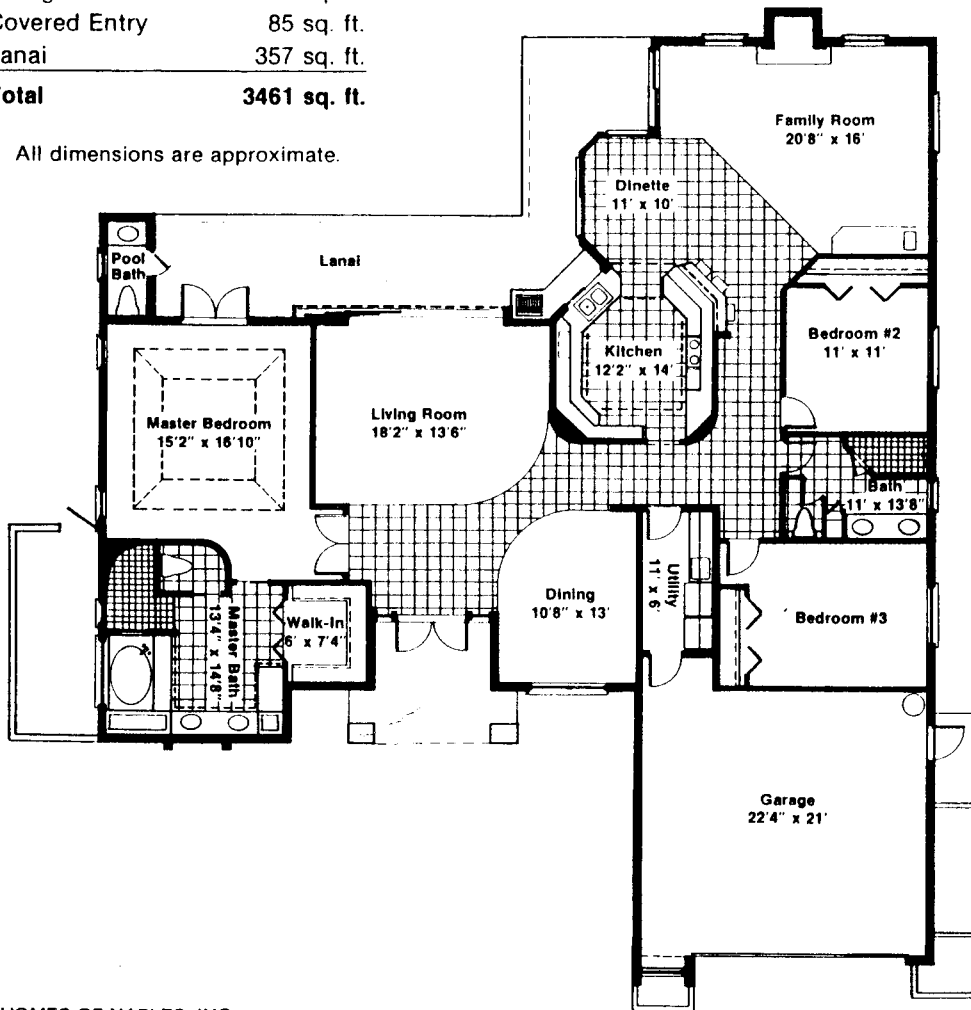


SANTA CRUZ



Living Area	2529 sq. ft.
Garage	490 sq. ft.
Covered Entry	85 sq. ft.
Lanai	357 sq. ft.
Total	3461 sq. ft.

All dimensions are approximate.



©COPYRIGHT HERITAGE HOMES OF NAPLES, INC.
ALL DIMENSIONS ARE APPROXIMATE.

ORAL PRESENTATION IS NOT TO BE RELIED UPON
AS CORRECTLY STATING REPRESENTATIONS OF THE BUILDER.