

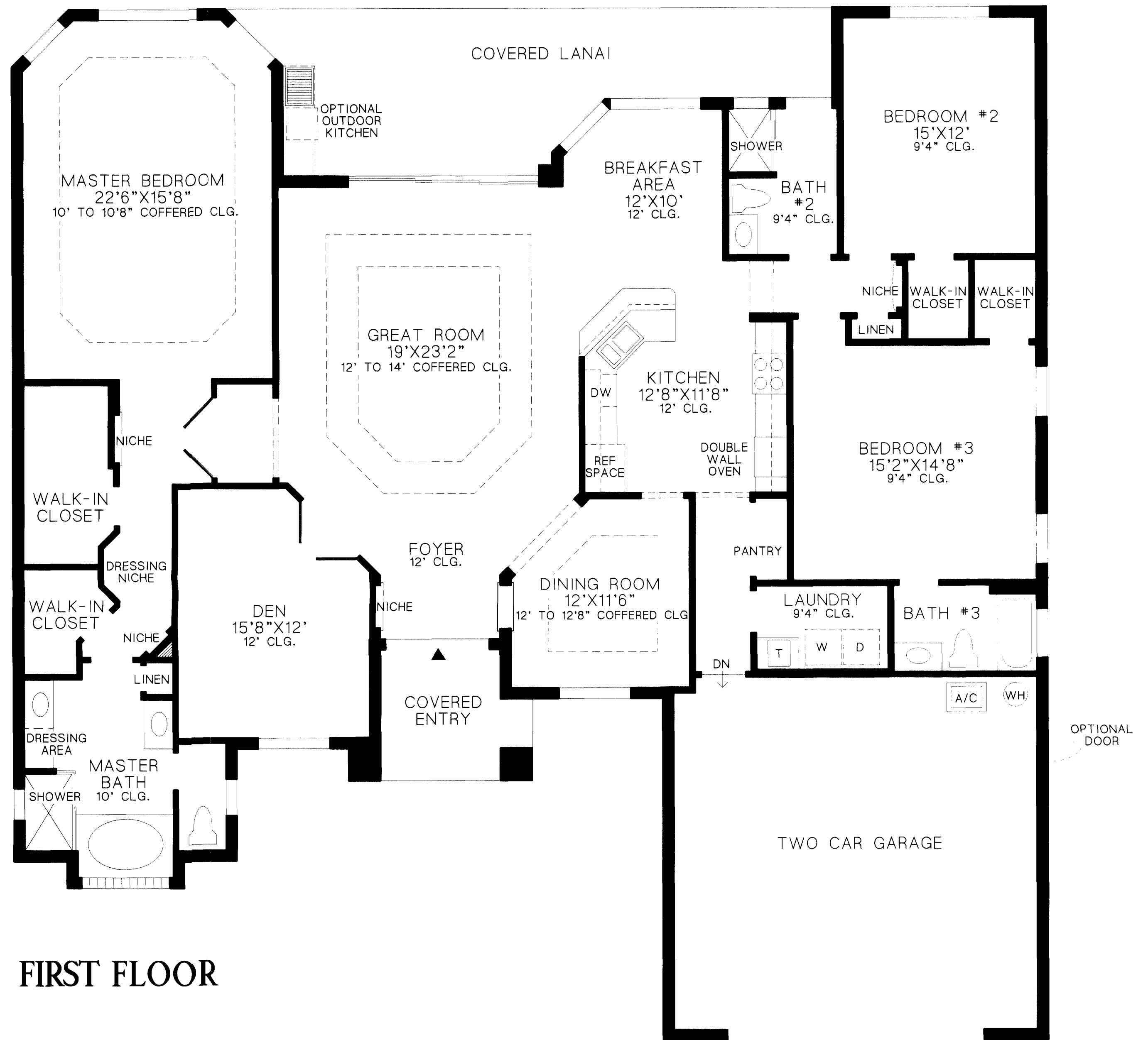
THE SANDPIPER COLLECTION

This beautiful home has many special features, such as a covered entry, open foyer that leads to a spacious great room with access to the covered lanai, well equipped kitchen which includes a pantry with adjoining breakfast area and dining room.

The expansive master bedroom with coffered ceiling and private access to covered lanai has many amenities such as two walk-in closets, luxurious master bath with dual vanities, private toilet area, and soaking tub.

Additional features found within this home include private den with double door entry and two car garage.

Air Conditioned Living Area	2634 sf
Covered Lanai	287 sf
Covered Entry	74 sf
Garage	540 sf
Total	3535 sf



FIRST FLOOR

All dimensions are approximate and are subject to field variations. Some windows and floor plans may vary with elevations. Some features may vary from community to community. Please consult Sales Manager for details. Options purchased must be specified in exhibit B.