

# THE OSPREY COLLECTION

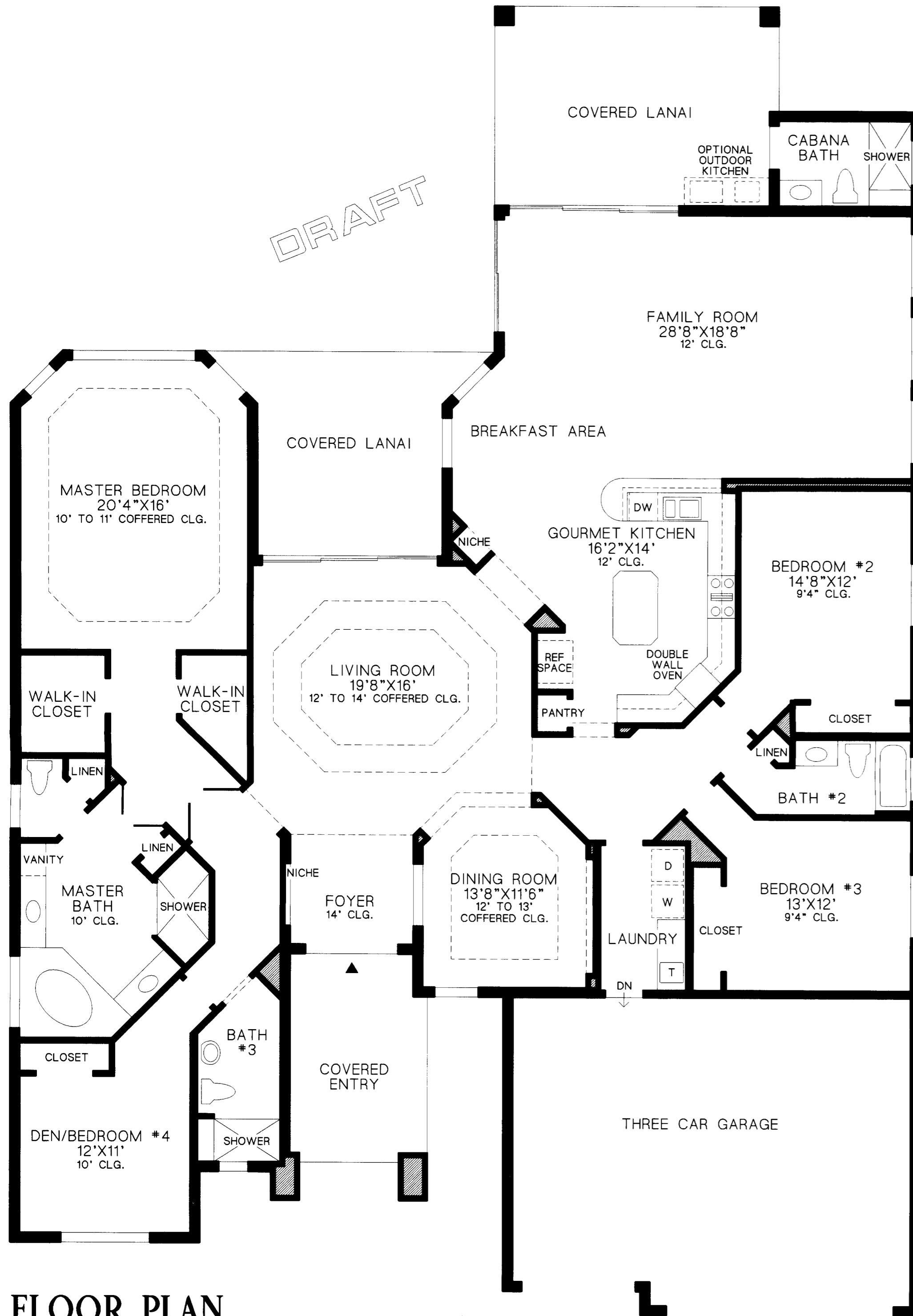
The splendid Osprey collection is unparalleled in stature.

This charismatic home is accentuated with many special features, such as a living room complete with views of the rear yard, a formal dining room, a well appointed kitchen with adjoining breakfast area, and a family room accessible to the covered lanai.

The expansive master bedroom suite not only establishes its own wing of the home, but also offers an array of standard features to include a coffered ceiling, a comprehensive bath complete with Roman tub and two large walk in closets.

Additional features found within this home include a private den, two additional bedrooms, three baths and a three car garage.

Air Conditioned Living Area	3372 sf
Covered Lanai	486 sf
Covered Entry	178 sf
Garage	648 sf
<b>Total</b>	<b>4684 sf</b>



FLOOR PLAN

**Toll Brothers**  
Quality Homes By Design®

All dimensions are approximate and are subject to field variations. Some windows and floor plans may vary with elevations. Some features may vary from community to community. Please consult Sales Manager for details. Options purchased must be specified in exhibit B.  
(NLLT/5089) 1013 © 1999 TOLL BROTHERS, INC.

The floorplans and elevations of Toll Brothers homes are copyrighted. We have enforced and will continue to enforce our federal copyrights to protect the investment of our homebuyers.

This insert was produced using recycled products. ♻️