

Napa

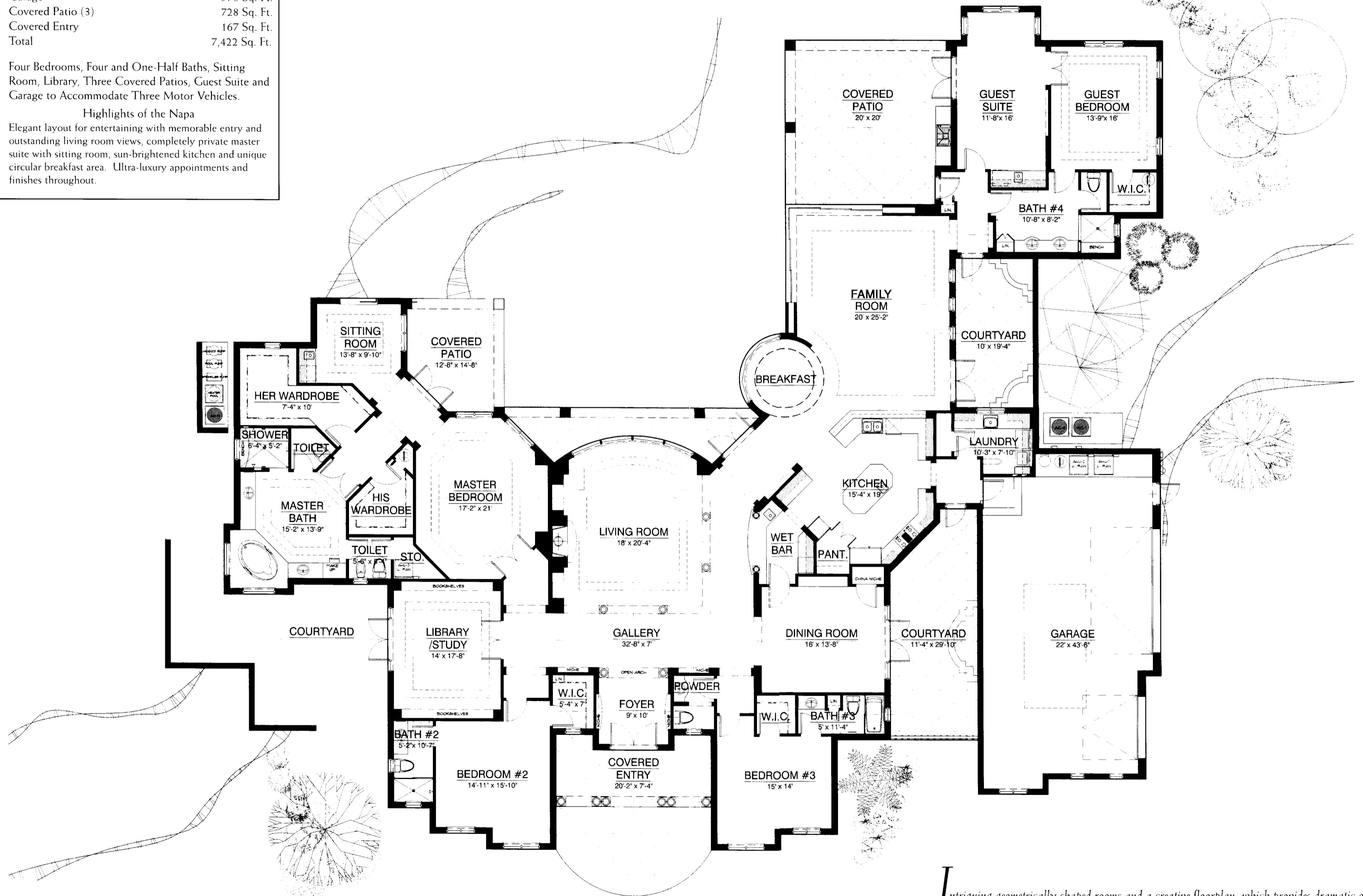
Four Bedrooms, Four and One-Half Baths, Sitting Room, Three Covered Patios, Library and Three Car Garage

Total Living Area	5,557 Sq. Ft.
Garage	970 Sq. Ft.
Covered Patio (3)	728 Sq. Ft.
Covered Entry	167 Sq. Ft.
Total	7,422 Sq. Ft.

Four Bedrooms, Four and One-Half Baths, Sitting Room, Library, Three Covered Patios, Guest Suite and Garage to Accommodate Three Motor Vehicles.

Highlights of the Napa

Elegant layout for entertaining with memorable entry and outstanding living room views, completely private master suite with sitting room, sun-brightened kitchen and unique circular breakfast area. Ultra-luxury appointments and finishes throughout.



All dimensions and specifications are approximate, and subject to change without notice.

Intriguing geometrically shaped rooms and a creative floorplan, which provides dramatic open living areas, makes this a comfortable and inspiring residence. Those who love to entertain will appreciate the dramatic covered entry, foyer, and gallery, which lead to a formal living room, dining room and library/study.