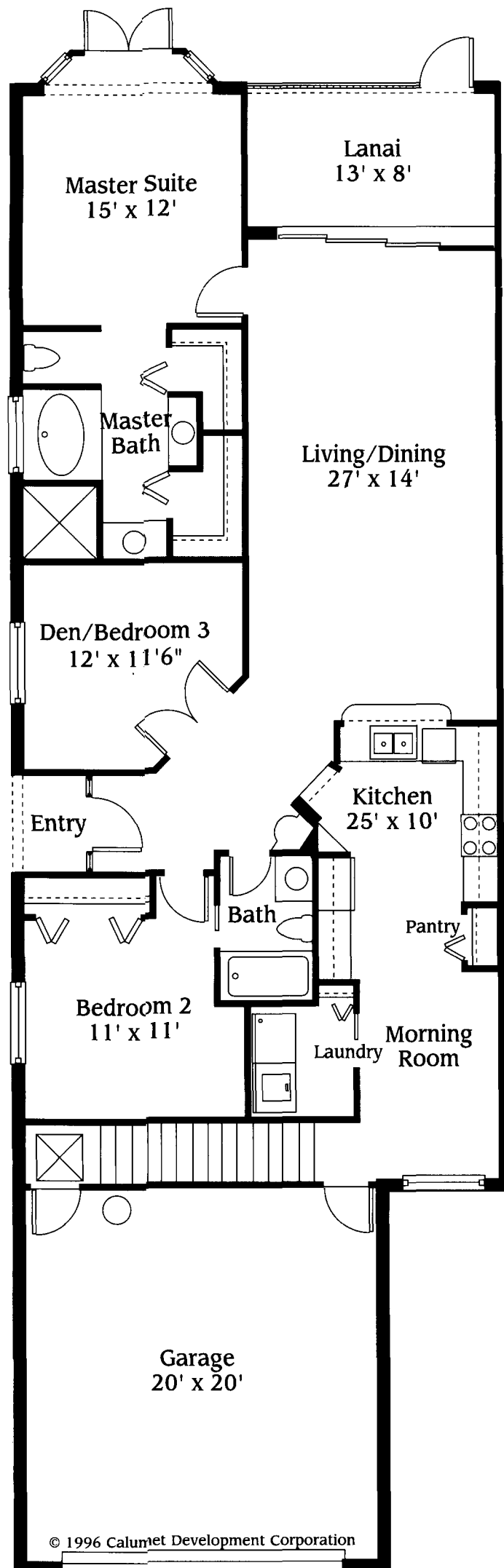


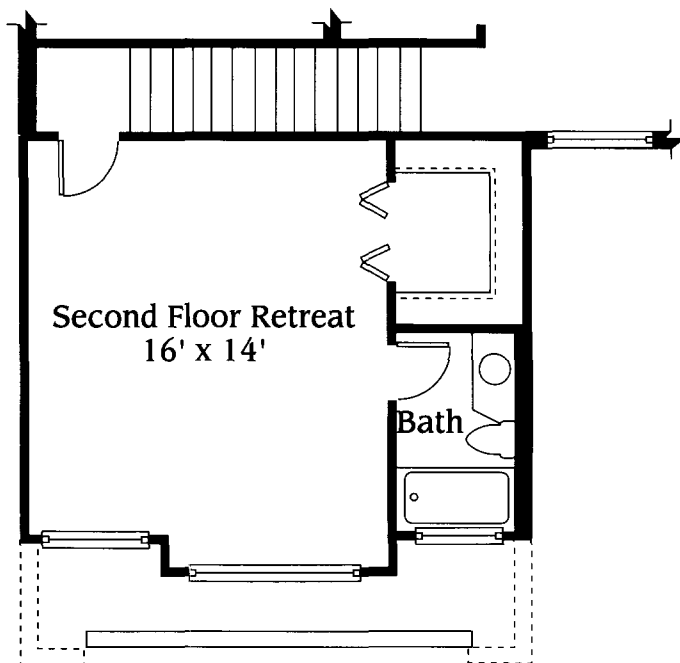
## Interior Features

- His-and-Hers Decorative Cultured Marble Countertops and Vanities With Custom Cabinetry
- Large, Lighted Full-Width Vanity Mirrors
- Mirrored Medicine Cabinets
- Linen Closet With Ventilated Shelving
- Large, Lighted Carpeted Walk-In Closet With Custom Ventilated Shelves in Master Suite
- Ceramic-Tile Tub and Shower Areas
- Ceramic-Tile Kitchen, Bath and Hall Floors
- Large Eat-In Kitchen
- Open Bar Counter Pass-Through Between Kitchen and Dining Area
- Solid-Surface Kitchen Countertops
- Custom Contemporary Raised Panel Kitchen Cabinetry With Adjustable Shelving
- Kitchen Pantry With Ventilated Steel Shelving
- Energy-Efficient General Electric White-On-White Appliances, Including:
  - TFX22CR Side-By-Side Frost-Free Refrigerator with Lighted Door Dispenser For Ice and Water
  - JBP76G Solid Surface Self-Cleaning Range
  - JVM1331W Microwave Oven
  - GSD680X Built-In Multiple-Cycle Dishwasher
  - WCXR1070T Full-Size Washer
  - DCLR333E Full-Size Dryer
- Separate Utility Room
- 9-Foot or Vaulted Textured Ceilings Throughout
- Decorative Designer Art Niches and Planter Shelves
- White Aluminum Window Frames
- Tinted Windows With Screens

# The Manchester 85



MANCHESTER 85 2ND FLOOR RETREAT



### SECOND FLOOR

LIVING AREA	1920 S.F.
LANAI	119 S.F.
GARAGE	413 S.F.
ENTRY	22 S.F.
TOTAL	2474 S.F.