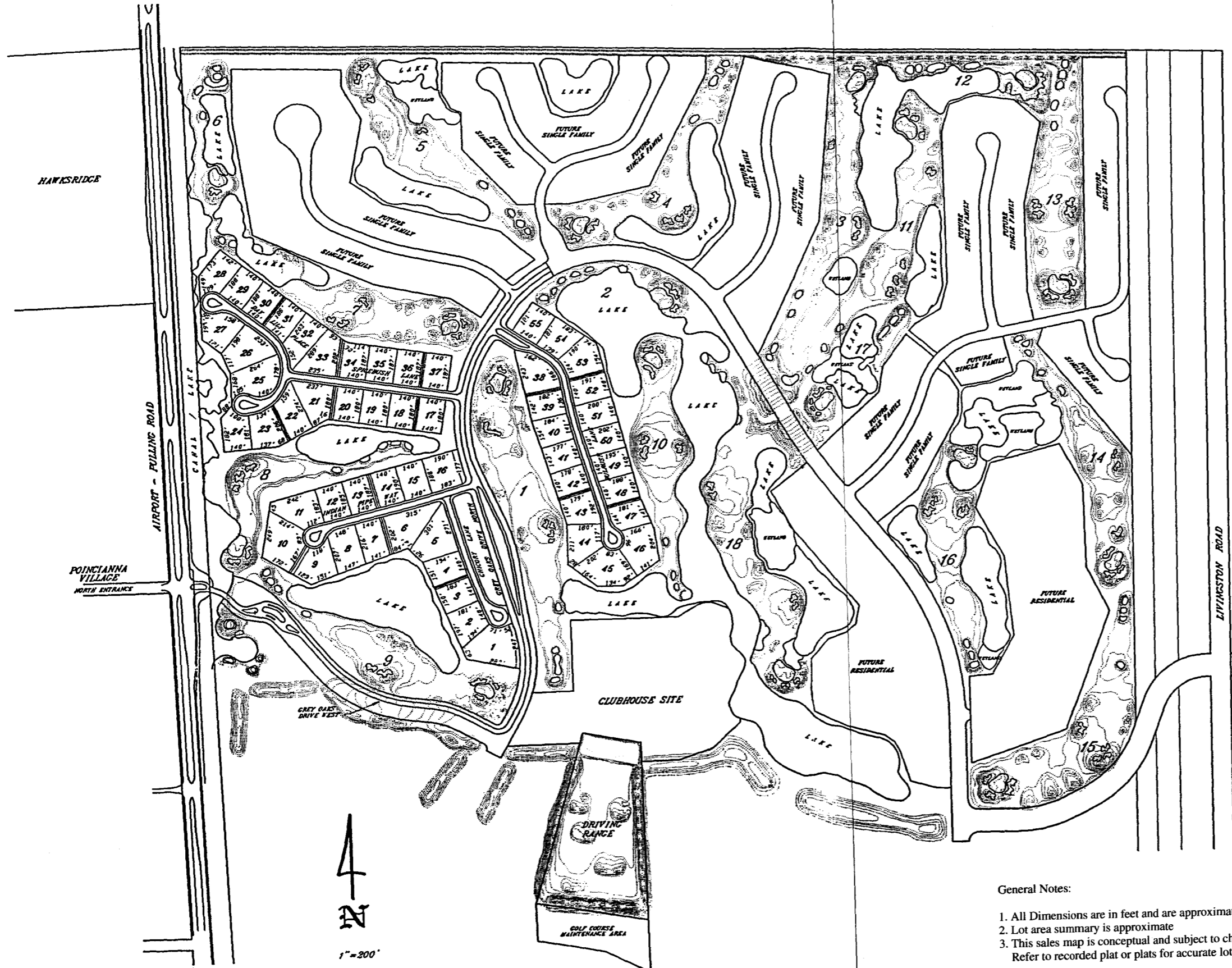


Grey Oaks

COUNTRY CLUB



LOT NO.	AREA SQUARE FEET	SUMMARY ACRES
1	49,321	1.13
2	30,646	0.70
3	26,322	0.60
4	27,244	0.63
5	40,520	0.93
6	41,652	0.96
7	29,239	0.67
8	32,274	0.74
9	34,331	0.79
10	48,361	1.11
11	37,613	0.86
12	25,696	0.59
13	25,982	0.60
14	26,267	0.60
15	26,398	0.61
16	34,955	0.80
17	25,200	0.58
18	25,200	0.58
19	25,200	0.58
20	25,200	0.58
21	35,043	0.80
22	32,842	0.75
23	32,812	0.75
24	28,093	0.64
25	41,098	0.94
26	40,468	0.94
27	32,453	0.75
28	30,318	0.70
29	26,279	0.60
30	26,279	0.60
31	26,698	0.61
32	32,404	0.74
33	37,555	0.86
34	26,379	0.61
35	26,186	0.60
36	26,186	0.60
37	26,186	0.60
38	34,723	0.80
39	25,325	0.58
40	26,494	0.61
41	25,080	0.58
42	24,956	0.57
43	29,853	0.69
44	32,778	0.75
45	44,563	1.02
46	38,016	0.87
47	25,787	0.59
48	25,842	0.59
49	26,841	0.62
50	27,824	0.64
51	28,217	0.65
52	27,354	0.63
53	34,383	0.79
54	29,266	0.67
55	25,320	0.58

Prepared for:
 Halstatt Partnership, Inc.
 For Grey Oaks Country Club
 2640 Golden Gate Parkway, Suite 118
 Poinciana Professional Park
 Naples, Florida 33942

Wilson, Miller, Barton & Peek, Inc.
 Engineers, planner and land surveyors
 Wilson Professional Center, Suite 200
 3200 Bailey Lane at Airport Road
 Naples, Florida 33942

General Notes:

1. All Dimensions are in feet and are approximate
2. Lot area summary is approximate
3. This sales map is conceptual and subject to change without notice.
 Refer to recorded plat or plats for accurate lot configuration and dimensions

MP-362
 Sheet 1
 Date Prepared March 16, 1992