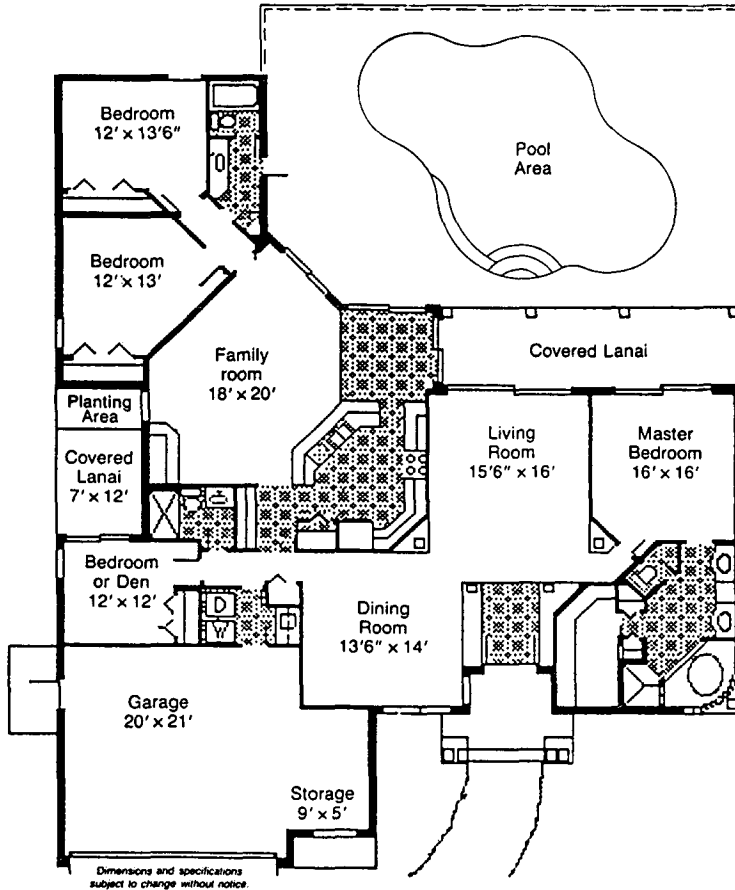


The Devonshire

Quality is our foundation. We look for it in the homes we buy, the builders we select, and the place we choose to live.

The luxurious total area of the "Devonshire" exceeds 3,700 sq. ft. of custom-crafted quality workmanship designed by John F. Soave, Inc. Some of the luxury features include a heated pool with spill-over spa, stucco and cedar exterior, lifetile roof, private lanai and garden, brick paver drive and sidewalks, a security system, central music and intercom system, central vacuum, insulated glass windows, tinted glass, ceiling fans, vaulted ceilings, custom cabinets, planter ledges, and ceramic tile in the foyer, kitchen, breakfast nook, baths, and laundry room.

The outdoor Florida lifestyle is emphasized by the serene setting of Lely Island Estates' seventh and fourth fairways. This new luxury residence is found snug and secure in a richly landscaped woodland setting just a chip shot away from every imaginable amenity.



LIVING AREA	2,690
COVERED ENTRY	110
COVERED LANAI	484
GARAGE	492
TOTAL AREA	3,766 SQ.FT.



JOHN F. SOAVE, INC.
BUILDER

"Quality Is Our Foundation"

John F. Soave, Inc.

John Soave

1719 Trade Center Way, #10

Naples, Florida 33942

(813) 591-1116