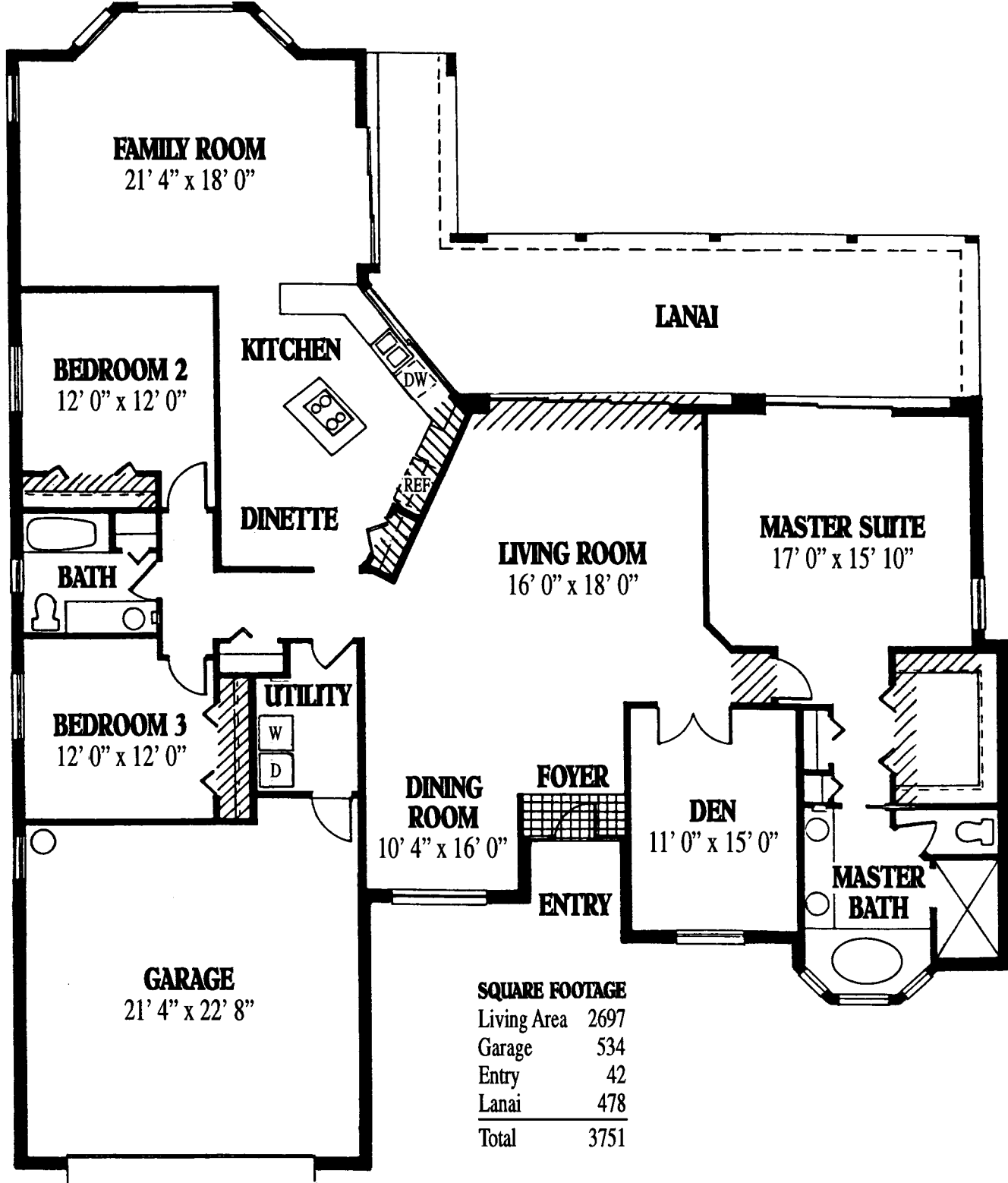
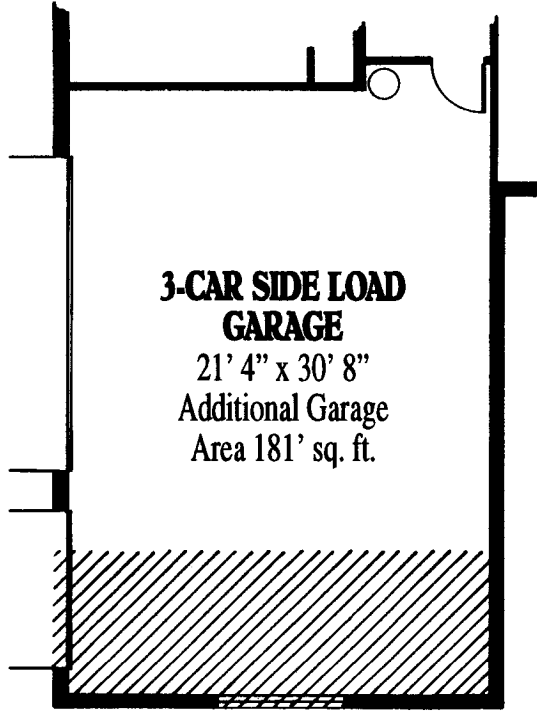
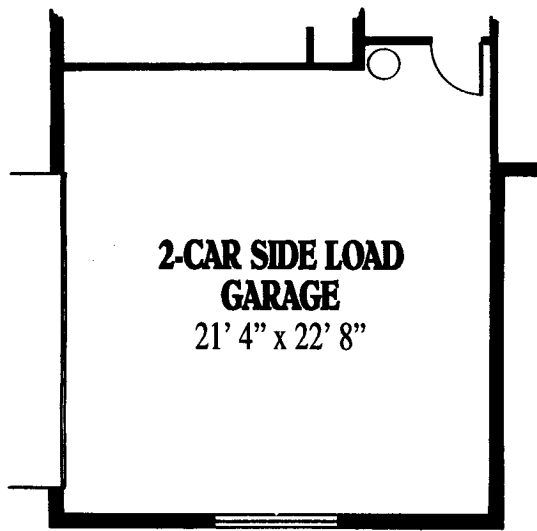
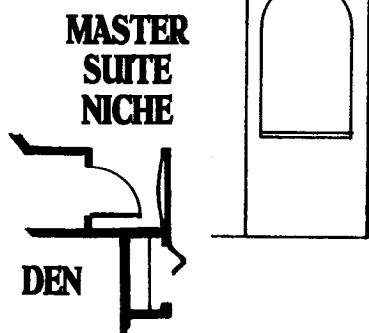
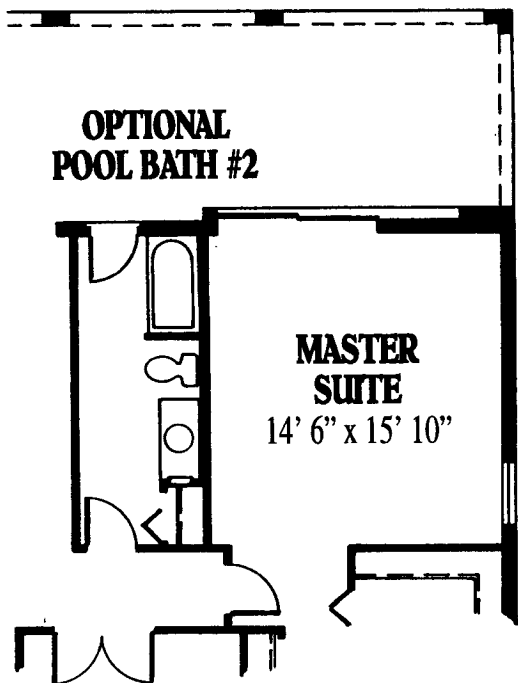


# CATALINA



If large spaces are what you're looking for, the Catalina floor plan has it. An enormous master suite and bath is situated next to an oversized den, a perfect retreat. As you pass through the center stove-top island kitchen, a private family room awaits. The two large side bedrooms share their own larger-than-normal bath. And, last but not least, numerous sliding glass doors lead the way to the L-shaped lanai from family room, living/dining room and master suite.





**P  
O  
P  
U  
L  
A  
R  
O  
P  
T  
I  
O  
N  
S**