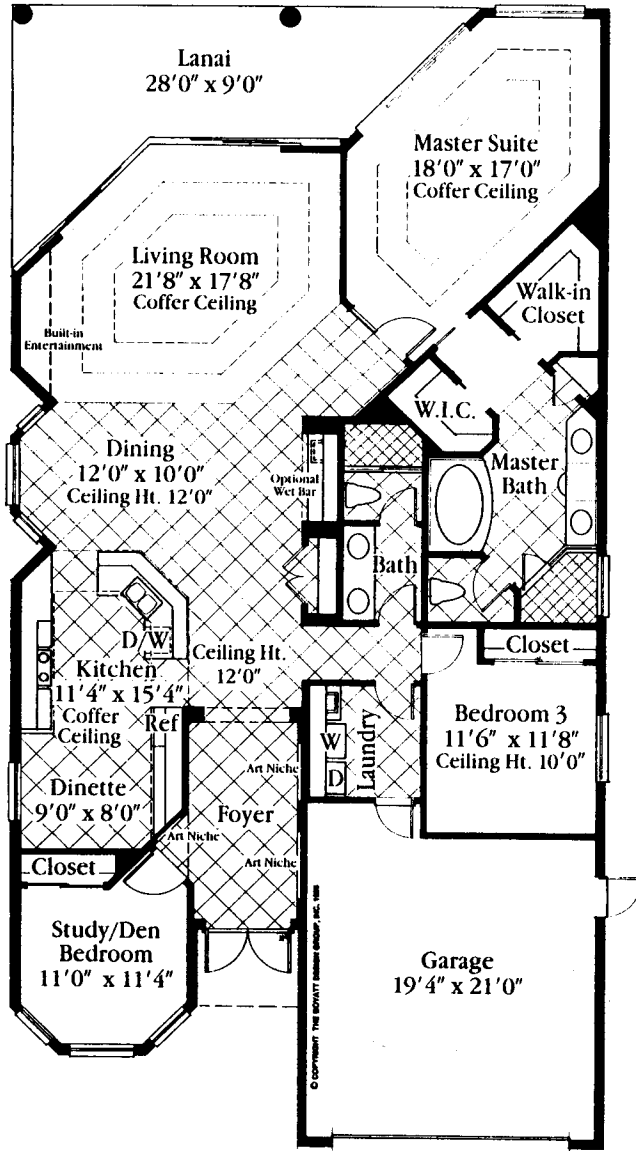


# THE BRISTOL

*OKart*



In this two bedroom plus den, two bath, 2,204-square-foot home, the covered entry leads to a foyer with soaring 15-foot ceilings and three built-in art niches.

An arched doorway welcomes residents and guests into the dramatic main living areas of the home. Coffered ceilings, a built-in entertainment center and an angled sliding glass wall opening onto the screened and covered lanai are just some of the architectural highlights of the living room. The formal dining room lends elegance to any meal with a bay window, optional wet bar and storage closet. The oversized kitchen is well-planned for function and style with an informal dining area. A study can be converted to a third bedroom or home office. The indulgent, 17' x 18' master suite provides for complete luxury, with floor-to-ceiling sliding glass doors opening onto the lanai. It features an opulent bath with Roman tub, private water closet area, and two walk-in closets, in addition to a linen closet. Together with the outdoor entertainment areas and the garage, the Bristol offers 2,991 total square feet.