



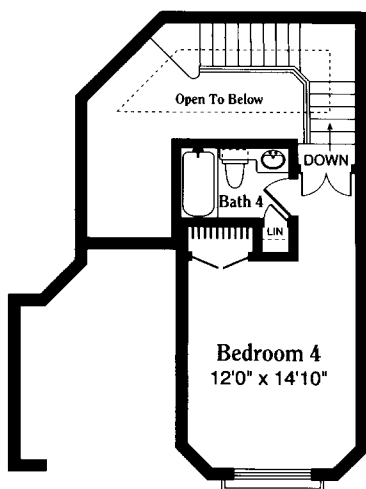
The Bardini

Living Area A/C 2,957 sq. ft.*
 Garage 556 sq. ft.
 Covered Entry 36 sq. ft.
 Covered Patio 269 sq. ft.

Total First Floor
 Under Roof 3,818 sq. ft.

Optional Second Floor
 Living Area A/C 335 sq. ft.

Total A/C Area 3,292 sq. ft.
 Total Under Roof 4,153 sq. ft.



Optional Second Floor

*Includes expanded foyer and staircase which would be altered for single-story Bardini floorplan.

