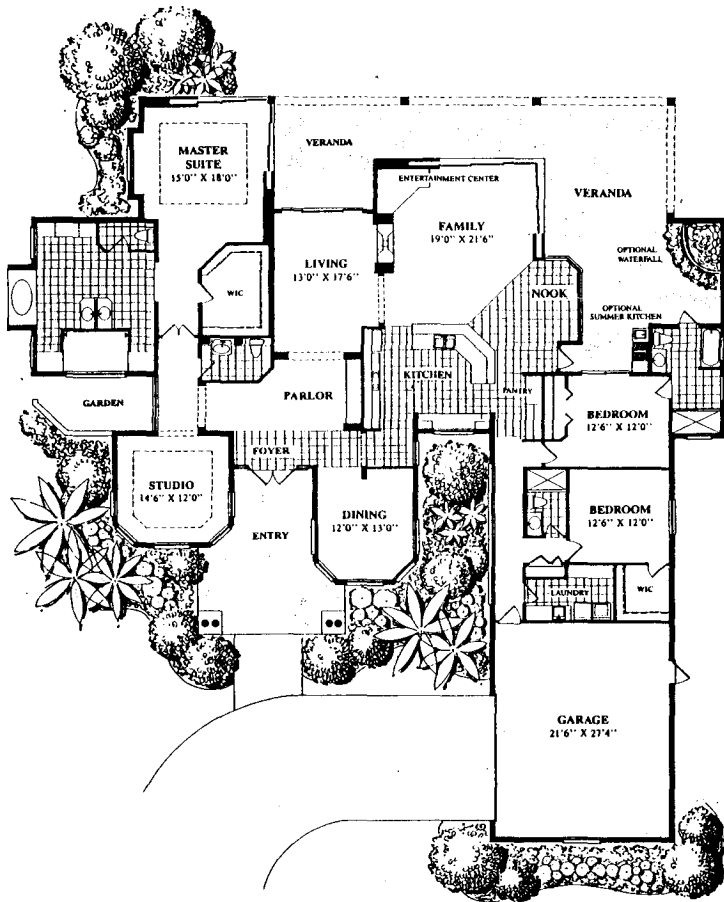


THE ATRIUM

The Atrium is a three bedroom plus studio, three and one-half bath home offering 3,413 air conditioned square feet and a total of 5,319 square feet. Two sets of "zero-degree sliding glass doors" open from the Master Suites and the family room to the pool and spa area.

The home's entertainment areas are comprised of formal living and dining rooms, with an optional fireplace which opens to both the living room and family room.

The Atrium also includes an attached two-car garage and an open veranda adjacent to the pool and spa, where an optional waterfall complements the tropical elegance of the home.



Needs to be scanned