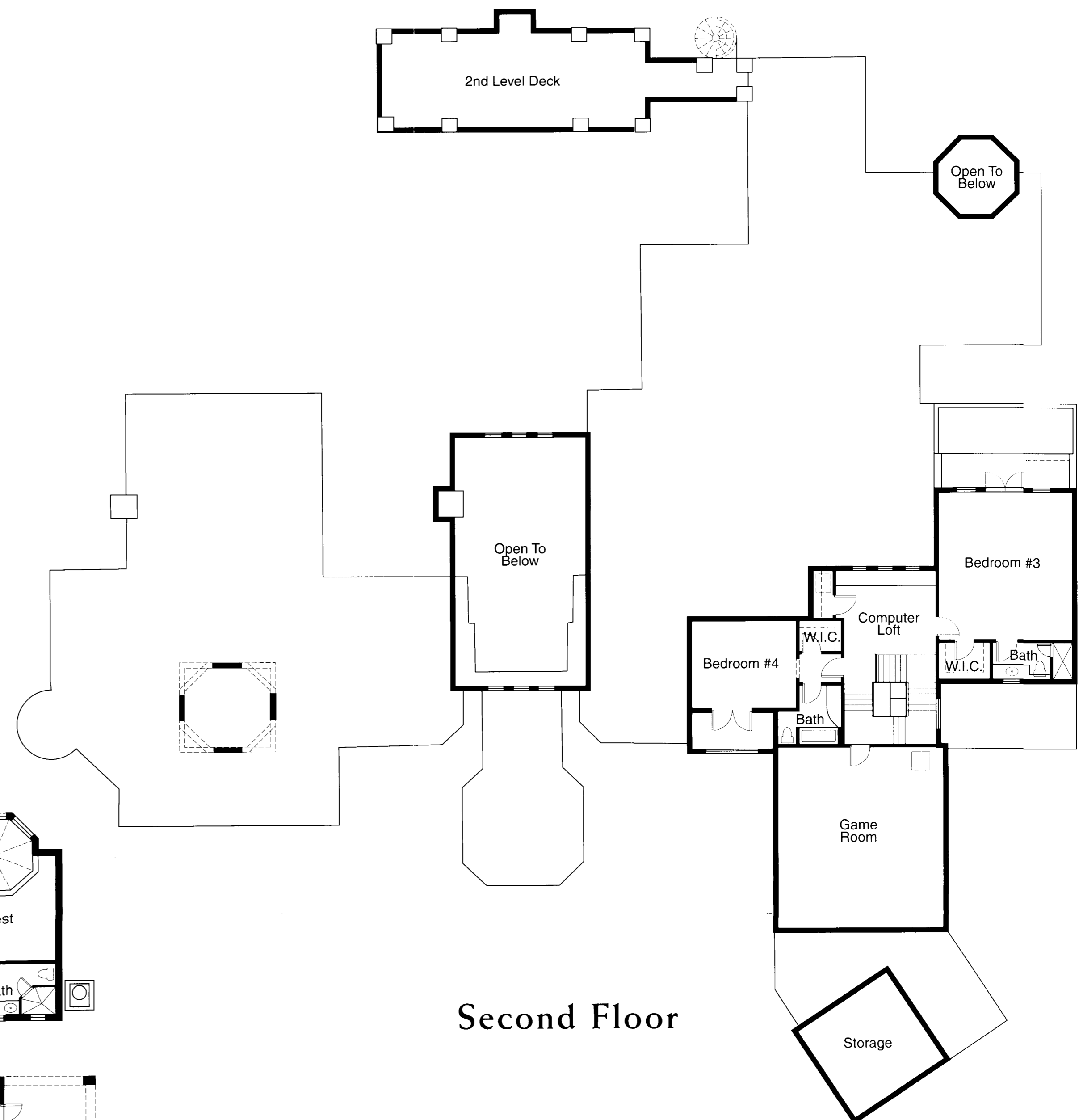
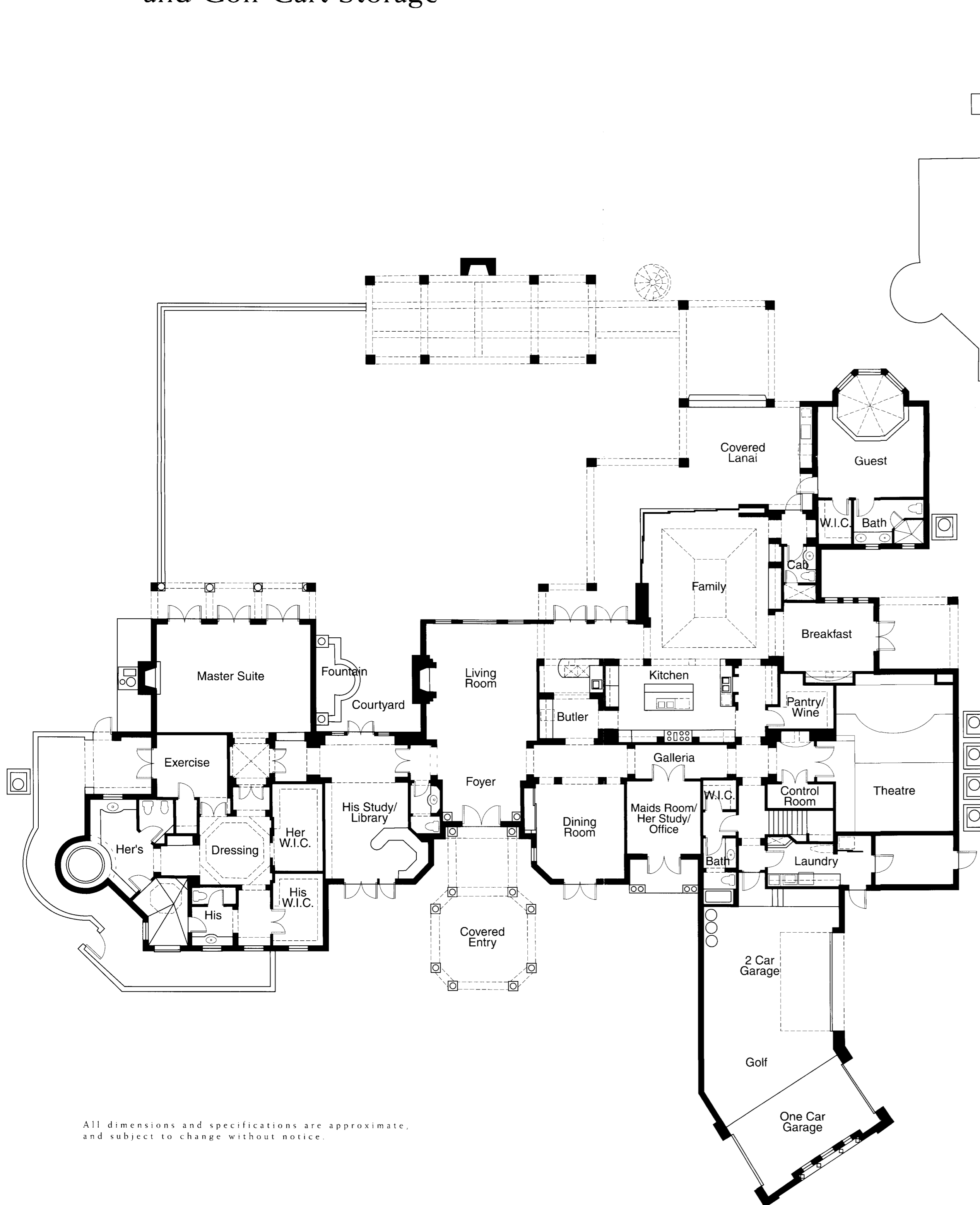


THE 2001 DREAM HOME
 by London Bay Homes
 Four Bedrooms, Six Full Baths,
 Two Half-Baths, Library, Theatre,
 Three-Car Garage
 and Golf Cart Storage



Second Floor

1st Floor A/C	6,419 Sq. Ft.
2nd Floor A/C	1,208 Sq. Ft.
Total A/C	7,627 Sq. Ft.
Garage	1,066 Sq. Ft.
Covered Entry	393 Sq. Ft.
1st Floor Covered	1,944 Sq. Ft.
2nd Floor Covered	158 Sq. Ft.
A/C Control Room	159 Sq. Ft.
Second Floor A/C Storage	595 Sq. Ft.
Total	11,942 Sq. Ft.

Four Bedrooms, Six Full Baths, Two Half-Baths, Library, Theatre, Three-Car Garage and Golf Cart Storage

Highlights of the 2001 Dream Home
 This magnificent estate home is entered through dramatic double mahogany doors to a two-story foyer and living room. The open kitchen, family room and breakfast areas allow the gourmet to join guests. A spectacular theatre room has two seating levels and a wet bar. A grand master wing with library, private his and her baths and closets, dressing room and exercise room is surrounded by a private walled courtyard. From the large covered lanai, view the 46' pool with separate spa and a 2-story pavilion with an abundance of vignette and turf gardens beyond.

All dimensions and specifications are approximate, and subject to change without notice.