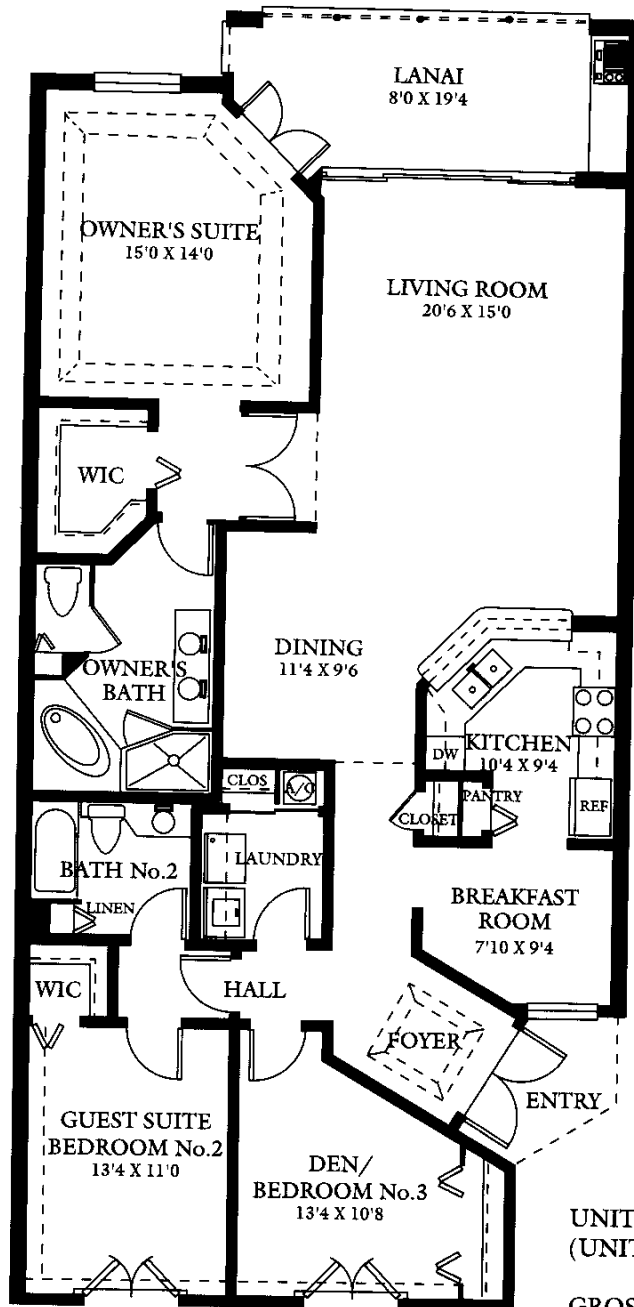


SPYGLASS

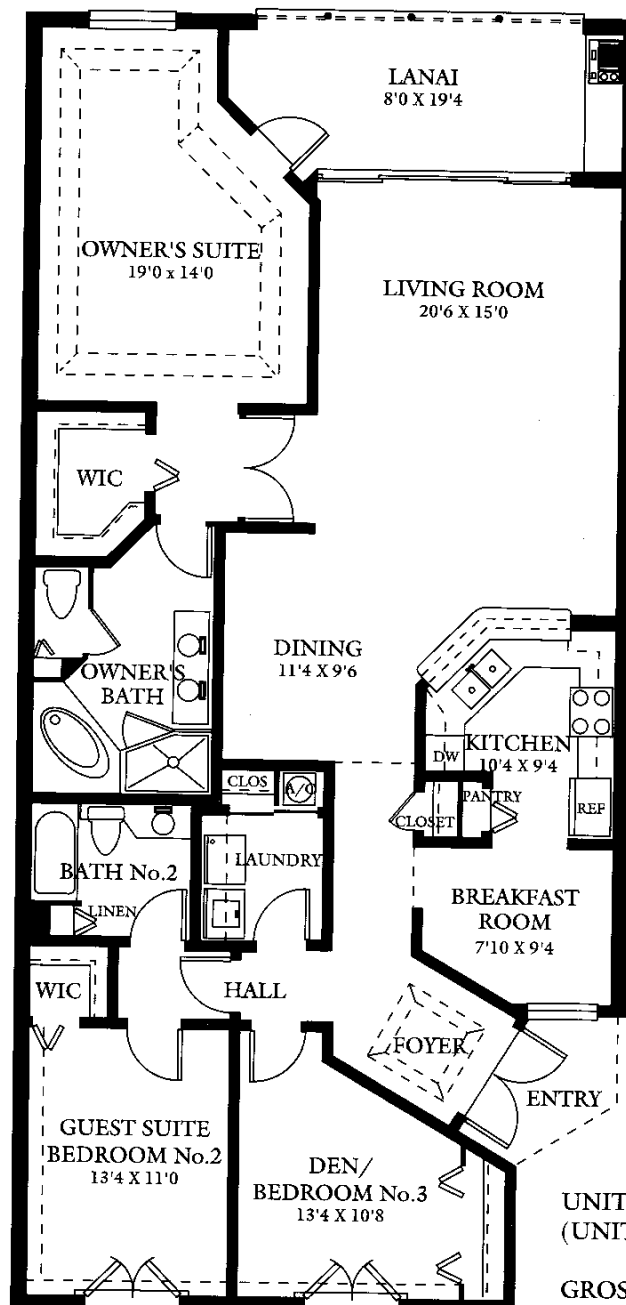


UNITS 204, 304, & 404
(UNITS 203, 303, & 403 - REVERSED)

GROSS LIVING AREA: 1641 GSF
SCREENED LANAI: 156
TOTAL AREA: 1797

All graphic depictions, including dimensions and area, are approximate and subject to change without notice. Oral representations cannot be relied upon as correctly stating representation of the developer. For correct representations, make reference to the documents required by FLORIDA STATUTES SECTION 718.503 to be furnished by the developer to the buyer or lessee.

SPYGLASS - FIRST FLOOR

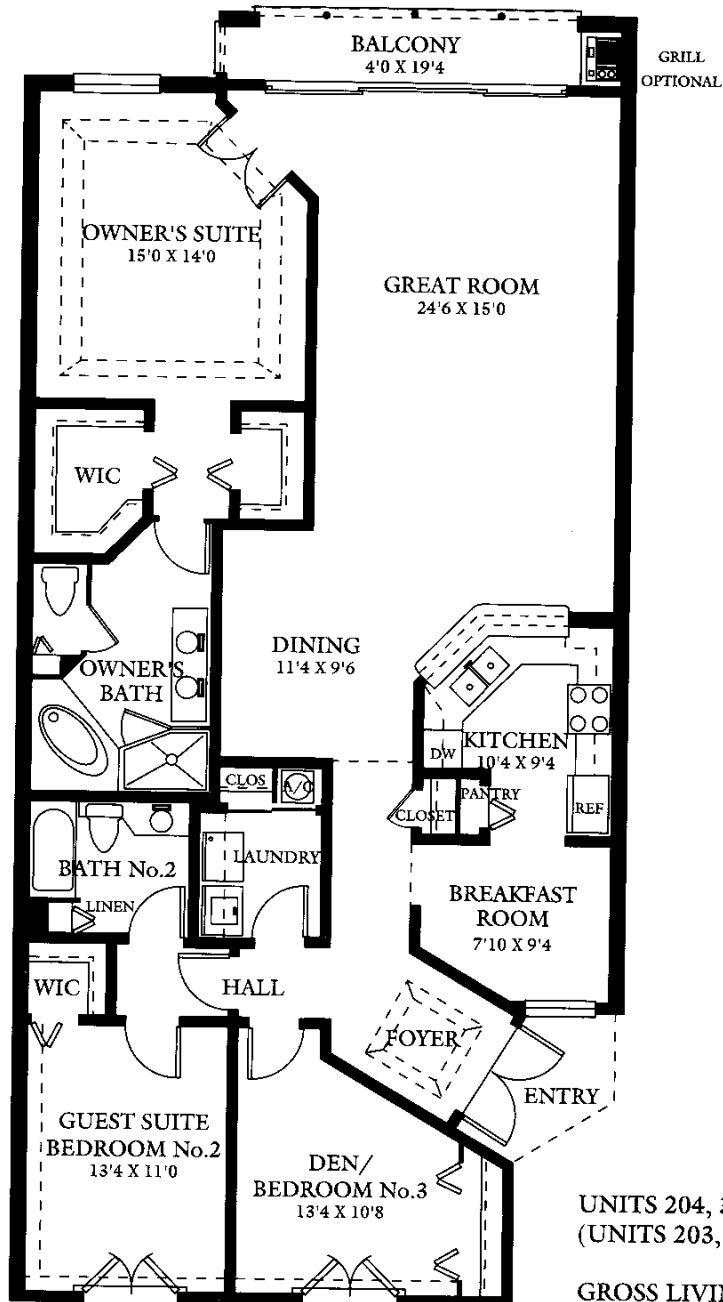


UNIT 104
(UNIT 103 - REVERSED)

GROSS LIVING AREA: 1688 GSF
SCREENED LANAI: 148
TOTAL AREA: 1836

All graphic depictions, including dimensions and area, are approximate and subject to change without notice. Oral representations cannot be relied upon as correctly stating representation of the developer. For correct representations, make reference to the documents required by FLORIDA STATUTES SECTION 718.503 to be furnished by the developer to the buyer or lessee.

SPYGLASS - FLORIDA OPTION

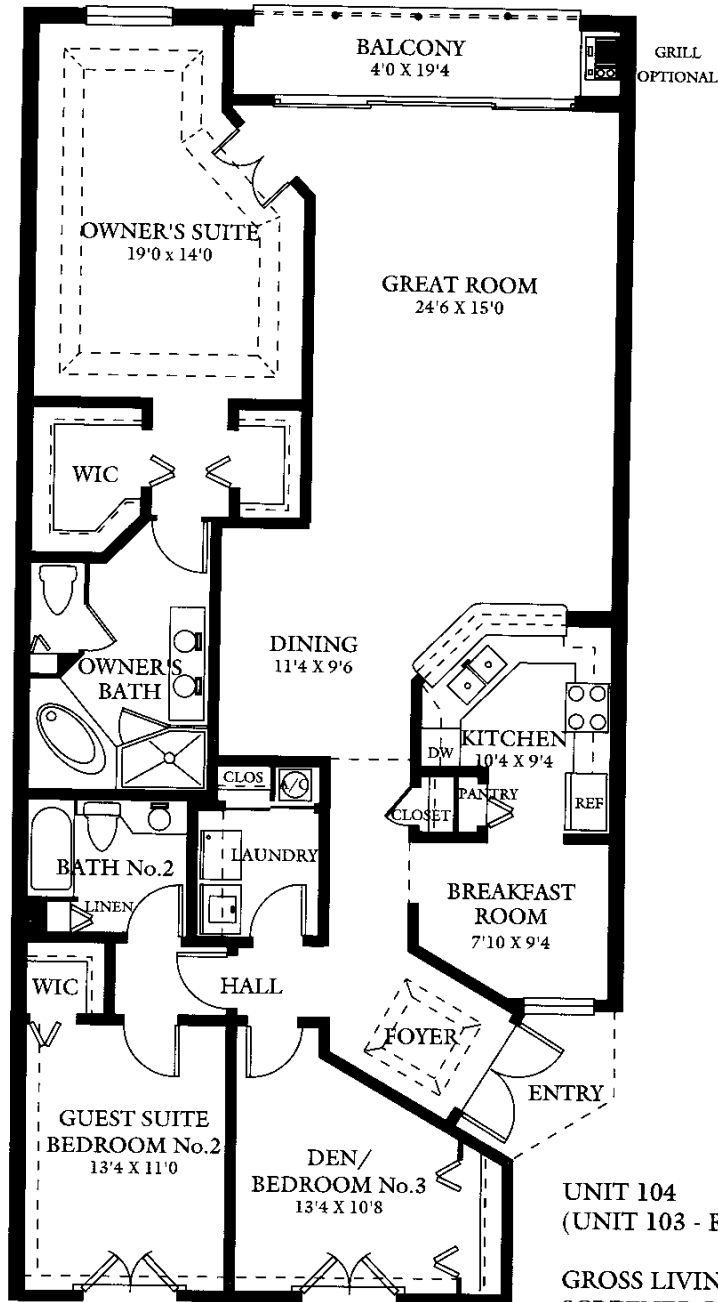


UNITS 204, 304, & 404
(UNITS 203, 303, & 403 - REVERSED)

GROSS LIVING AREA: 1716 GSF
SCREENED BALCONY: 81
TOTAL AREA: 1797

All graphic depictions, including dimensions and area, are approximate and subject to change without notice. Oral representations cannot be relied upon as correctly stating representation of the developer. For correct representations, make reference to the documents required by FLORIDA STATUTES SECTION 718.503 to be furnished by the developer to the buyer or lessee.

SPYGLASS - FLORIDA OPTION FIRST FLOOR



UNIT 104
(UNIT 103 - REVERSED)

GROSS LIVING AREA: 1758 GSF
SCREENED BALCONY: 78
TOTAL AREA: 1836

All graphic depictions, including dimensions and area, are approximate and subject to change without notice. Oral representations cannot be relied upon as correctly stating representation of the developer. For correct representations, make reference to the documents required by FLORIDA STATUTES SECTION 718.503 to be furnished by the developer to the buyer or lessee.