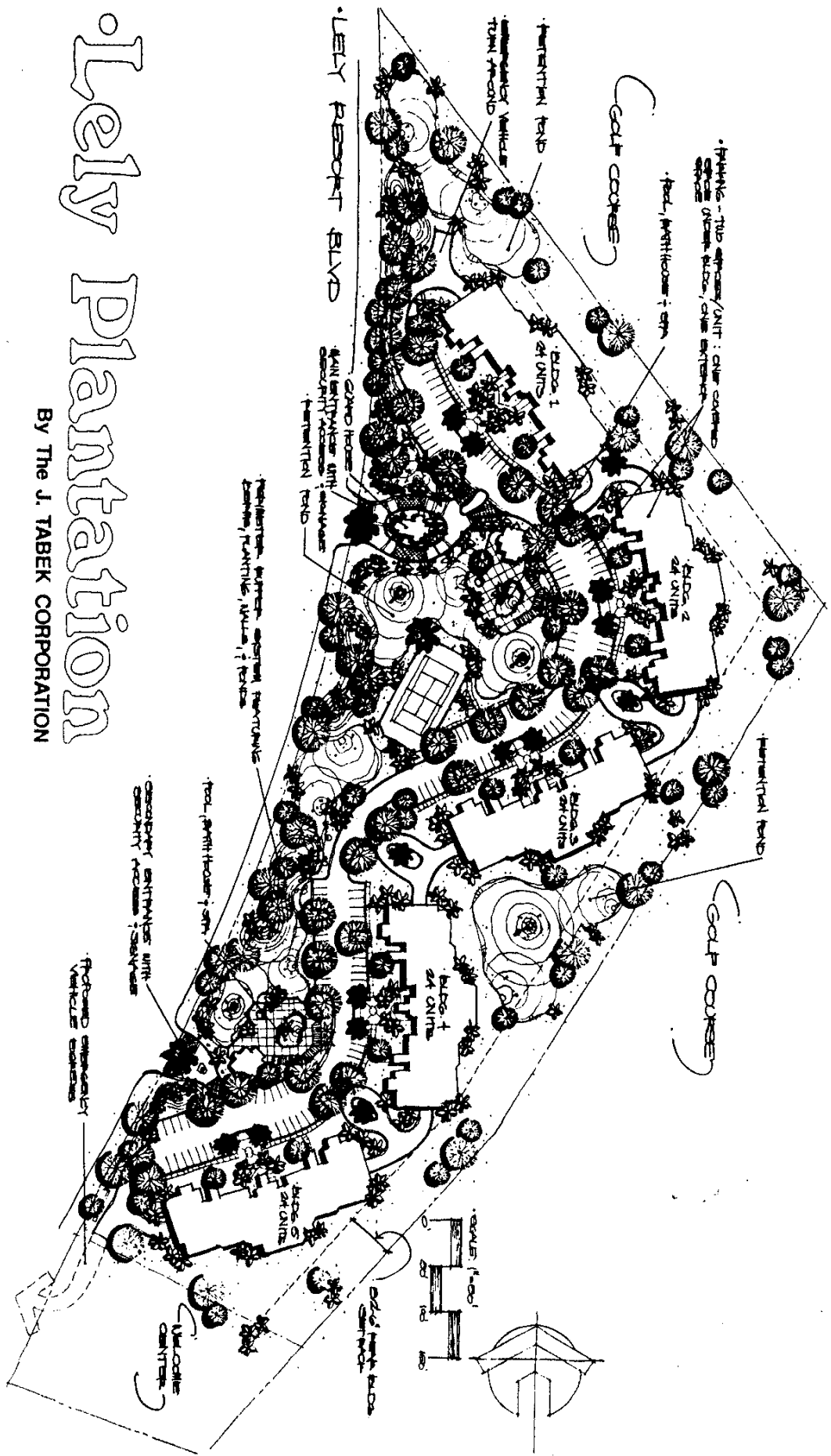
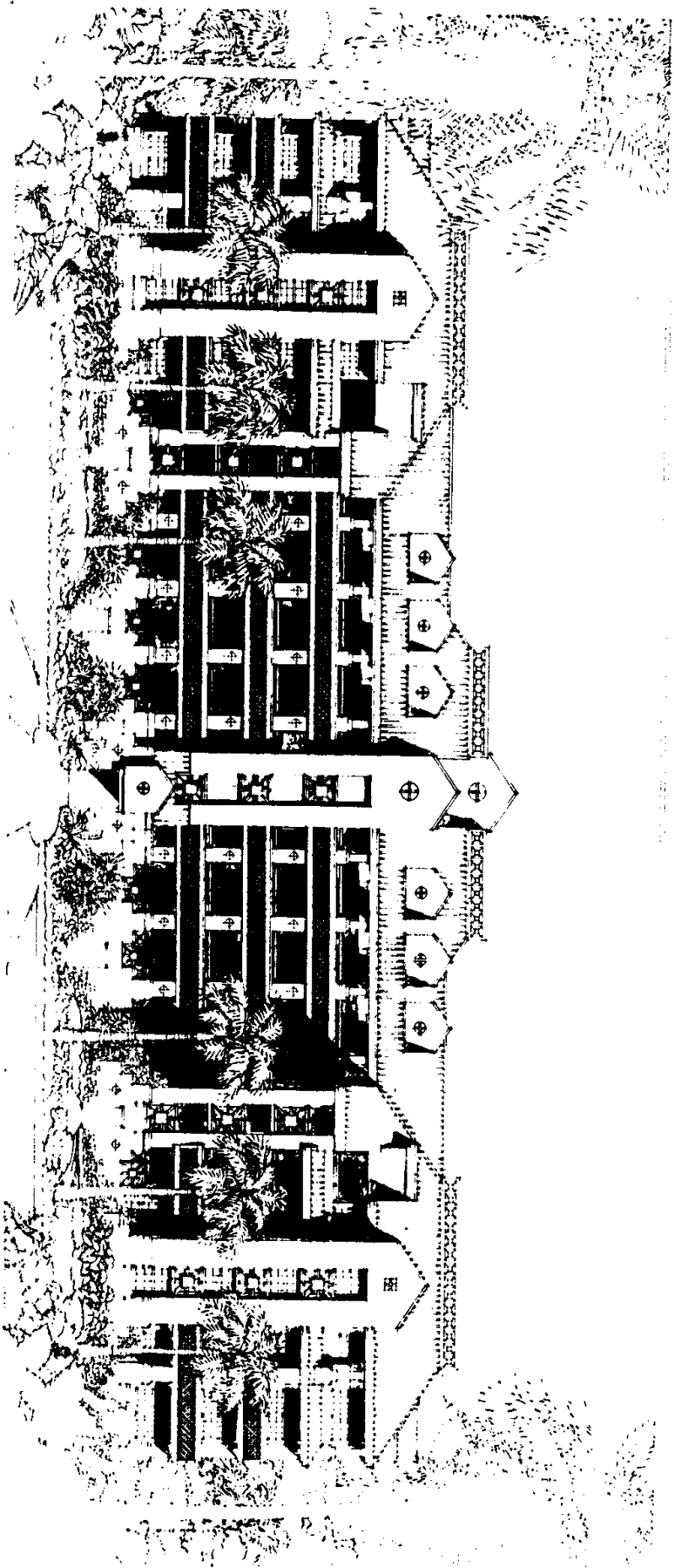


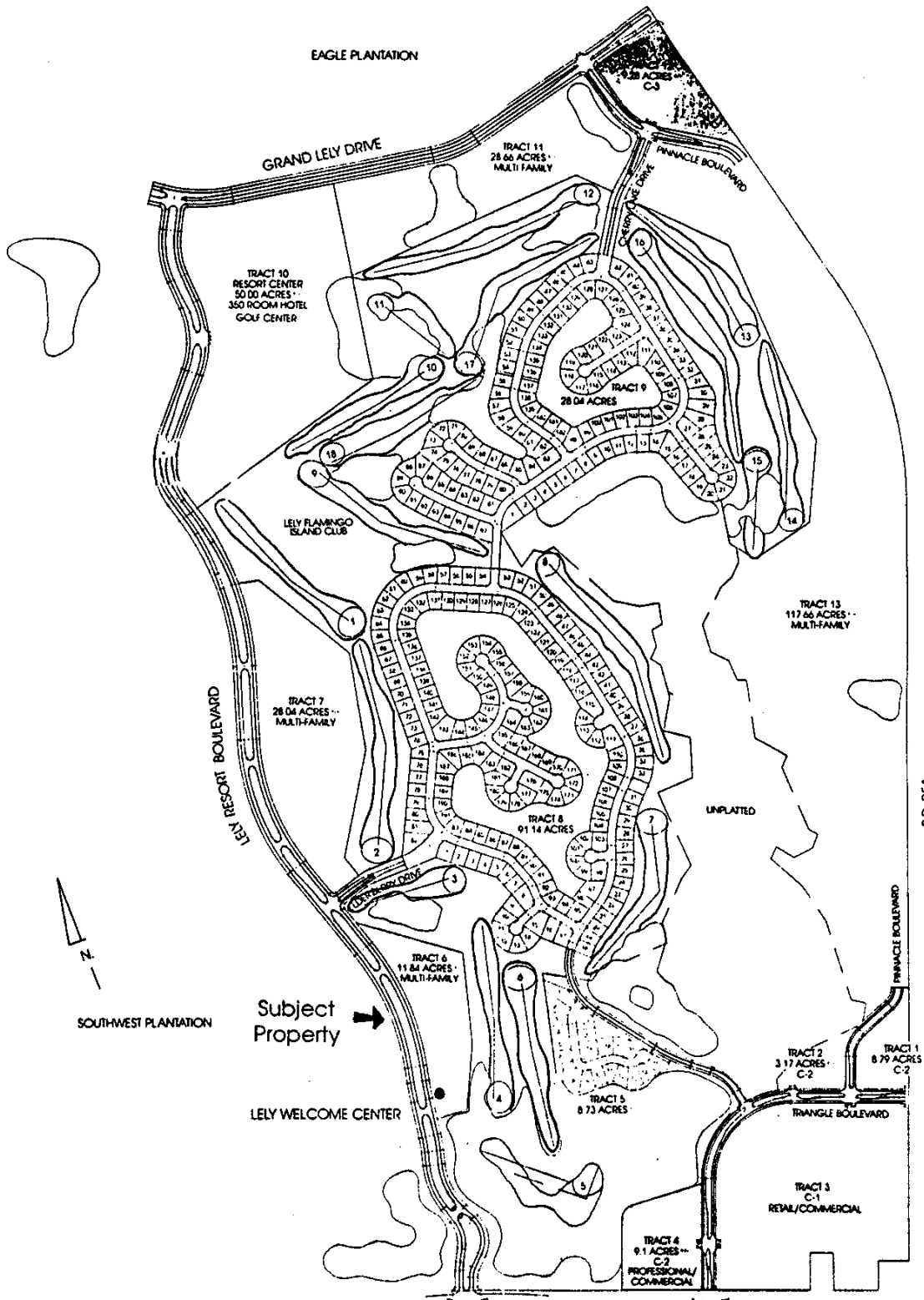
Lely Plantation

By The J. TABEK CORPORATION



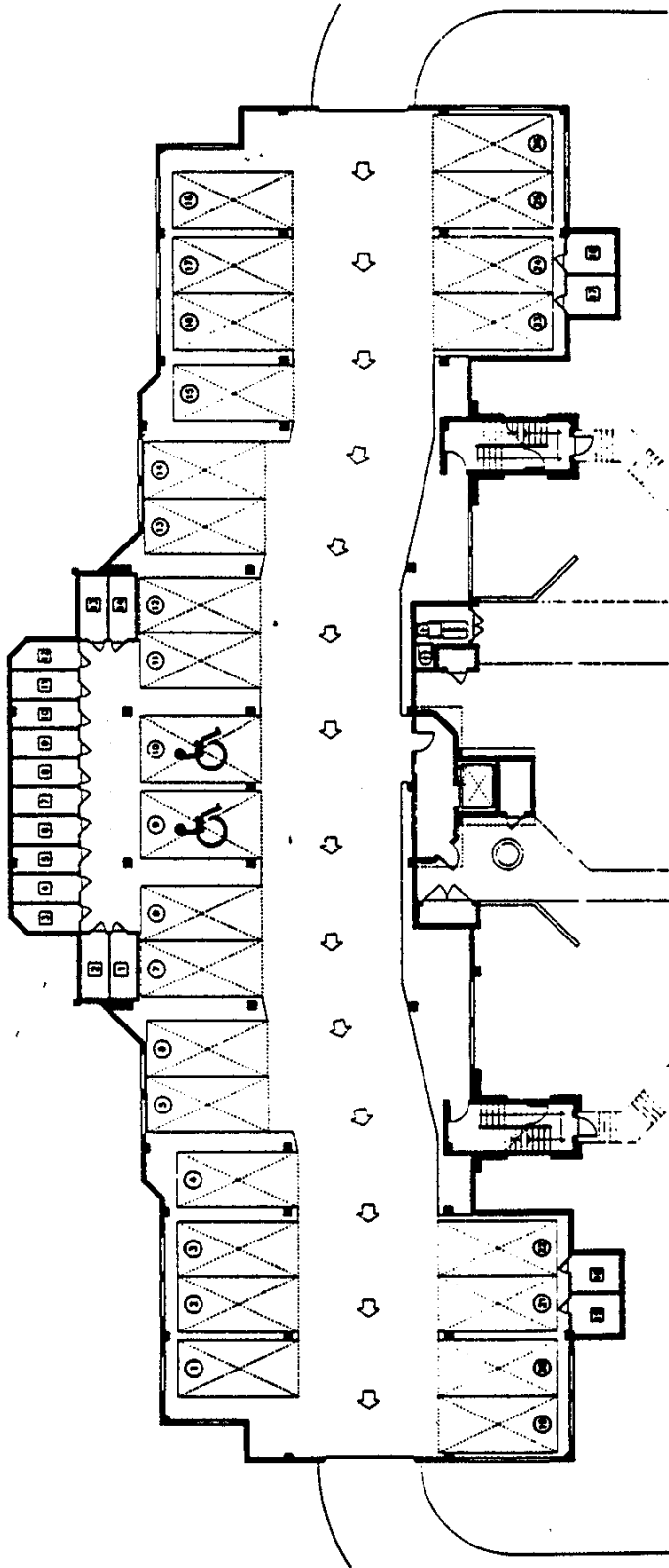
THE UNIVERSITY OF THE SOUTH PACIFIC





S.R. 951





PARKING LEVEL

Note: The drawing to the left illustrates 26 parking spaces and 18 storage areas. This level has been redesigned to include the following amenities:

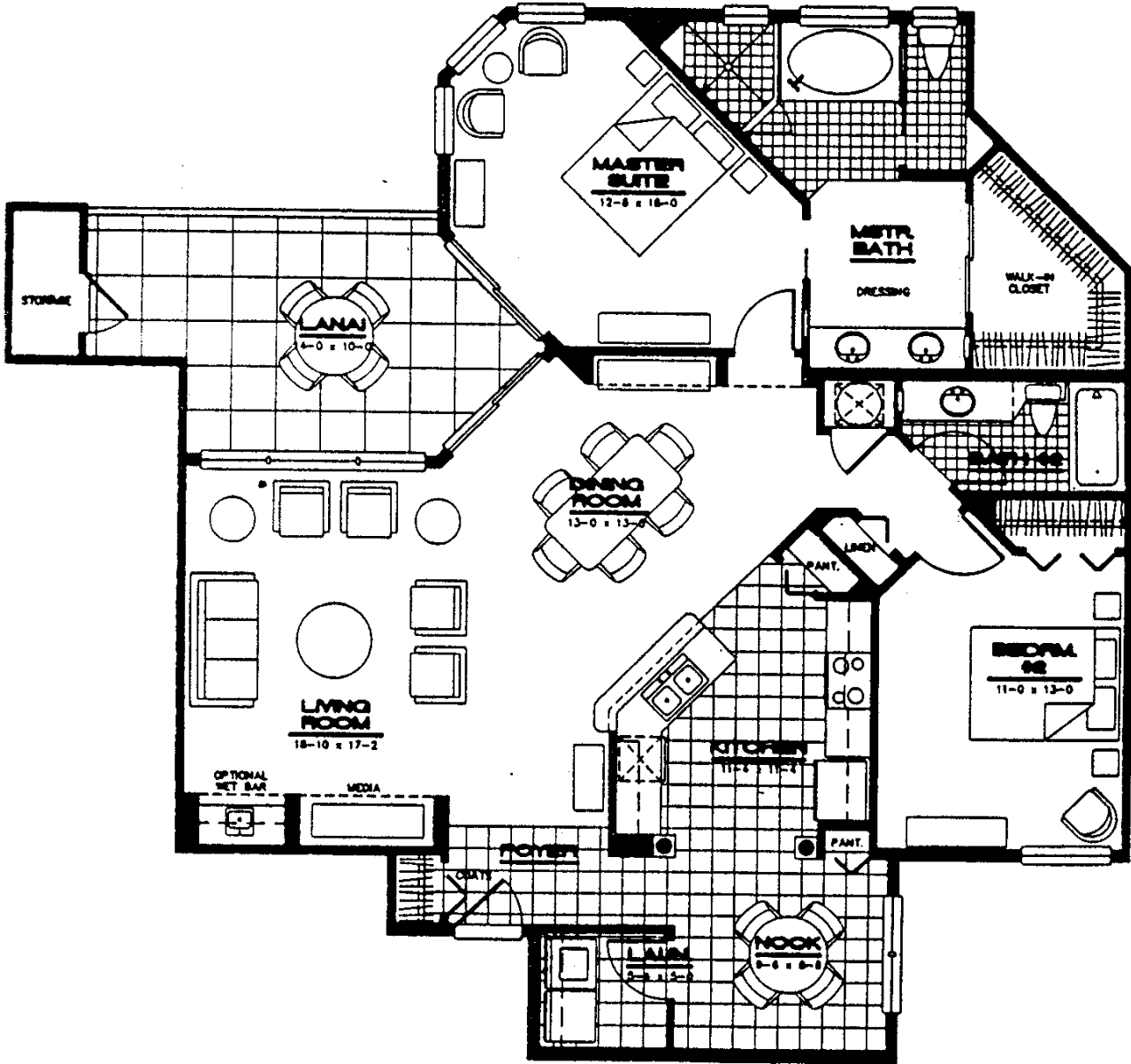
The parking level will contain 24 parking spaces, one parking space per unit.

This level will also contain 24 locked storage areas, one storage area per unit.

The parking level can be entered from the elevator lobby, or through the automatic garage doors.

For added security, the automatic garage doors can only be opened by unit owners.

UNIT "A"	
AREA CALCULATIONS	
Living / A.C. Area:	1,485 Sq. Ft.
Lanai:	179 Sq. Ft.
Storage:	26 Sq. Ft.
TOTAL AREA:	1,690 Sq. Ft.
<p>Note: This unit has been upgraded to include a door dividing the Guest bedroom and Guest bath from the rest of the unit. This will create a Guest suite effect when closed.</p>	

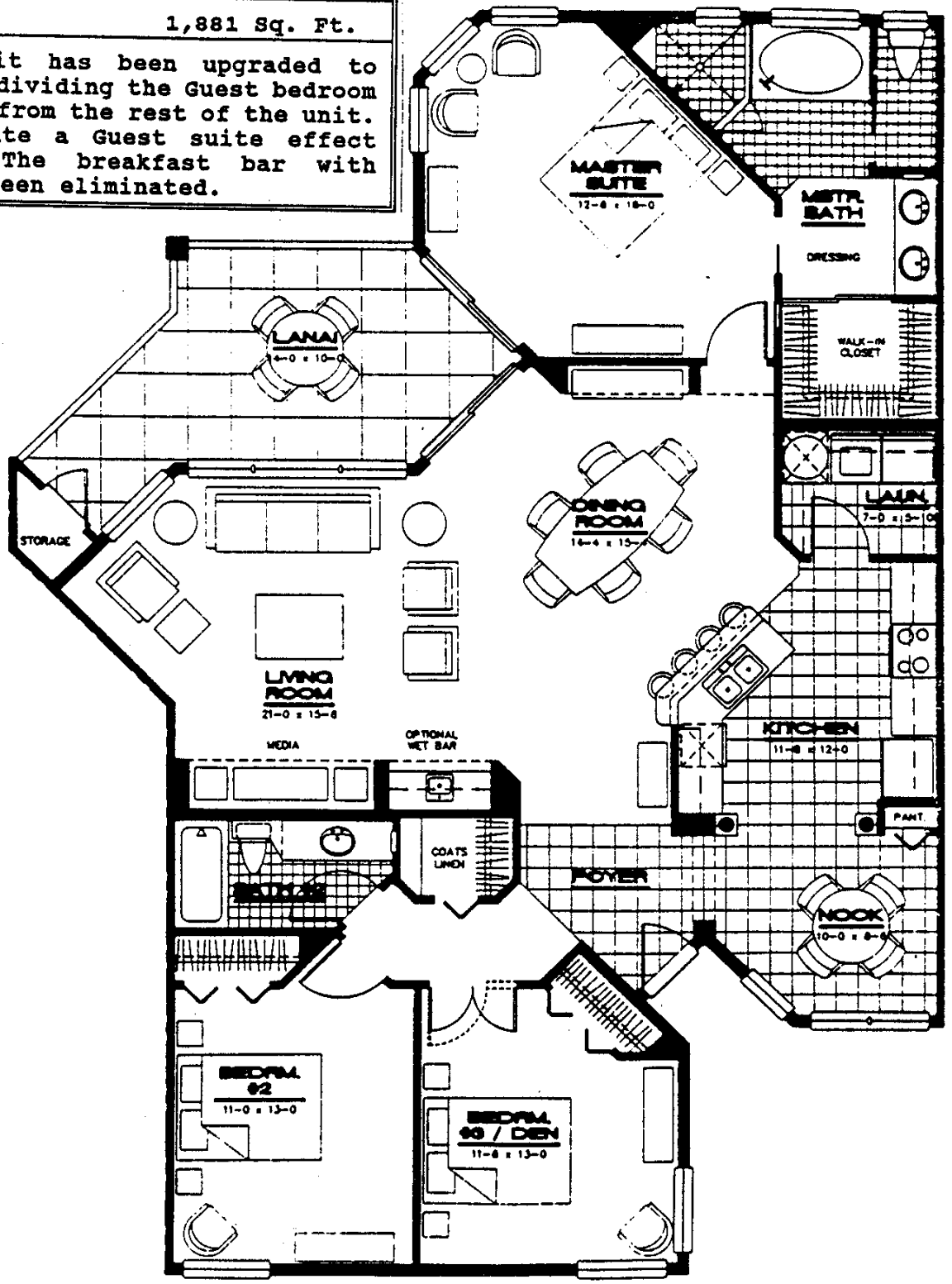


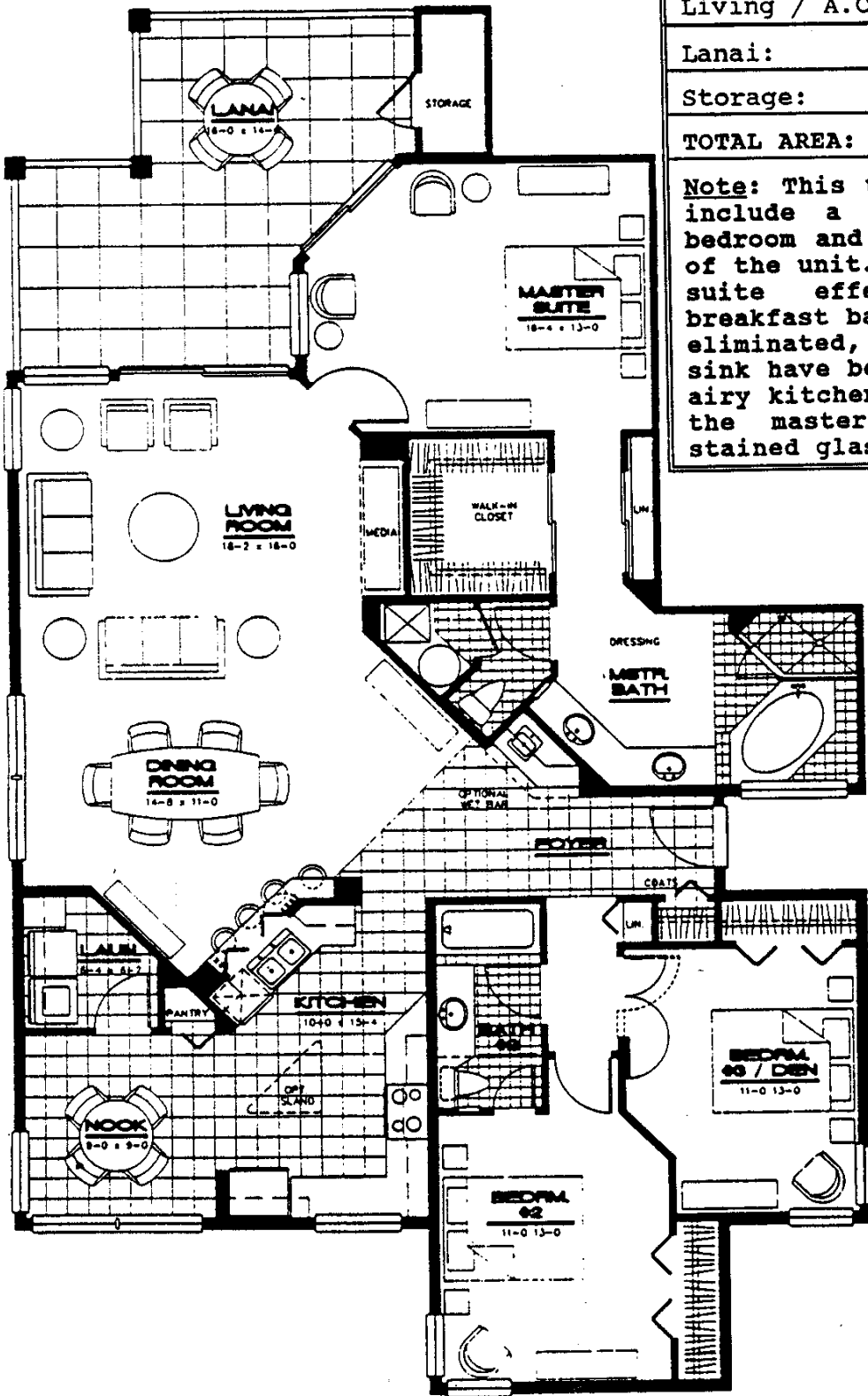
UNIT "B"

AREA CALCULATIONS

Living / A.C. Area:	1,698 Sq. Ft.
Lanai:	170 Sq. Ft.
Storage:	13 Sq. Ft.
TOTAL AREA:	1,881 Sq. Ft.

Note: This unit has been upgraded to include a door dividing the Guest bedroom and Guest bath from the rest of the unit. This will create a Guest suite effect when closed. The breakfast bar with barstools has been eliminated.





UNIT "C"

AREA CALCULATIONS

Living / A.C. Area:	1,837 Sq. Ft.
Lanai:	248 Sq. Ft.
Storage:	26 Sq. Ft.
TOTAL AREA:	2,111 Sq. Ft.

Note: This unit has been upgraded to include a door dividing the Guest bedroom and Guest bath from the rest of the unit. This will create a Guest suite effect when closed. The breakfast bar with barstools has been eliminated, and the cabinets above the sink have been moved to allow an open airy kitchen. The picture window over the master bath is available in stained glass or one-way glass block.