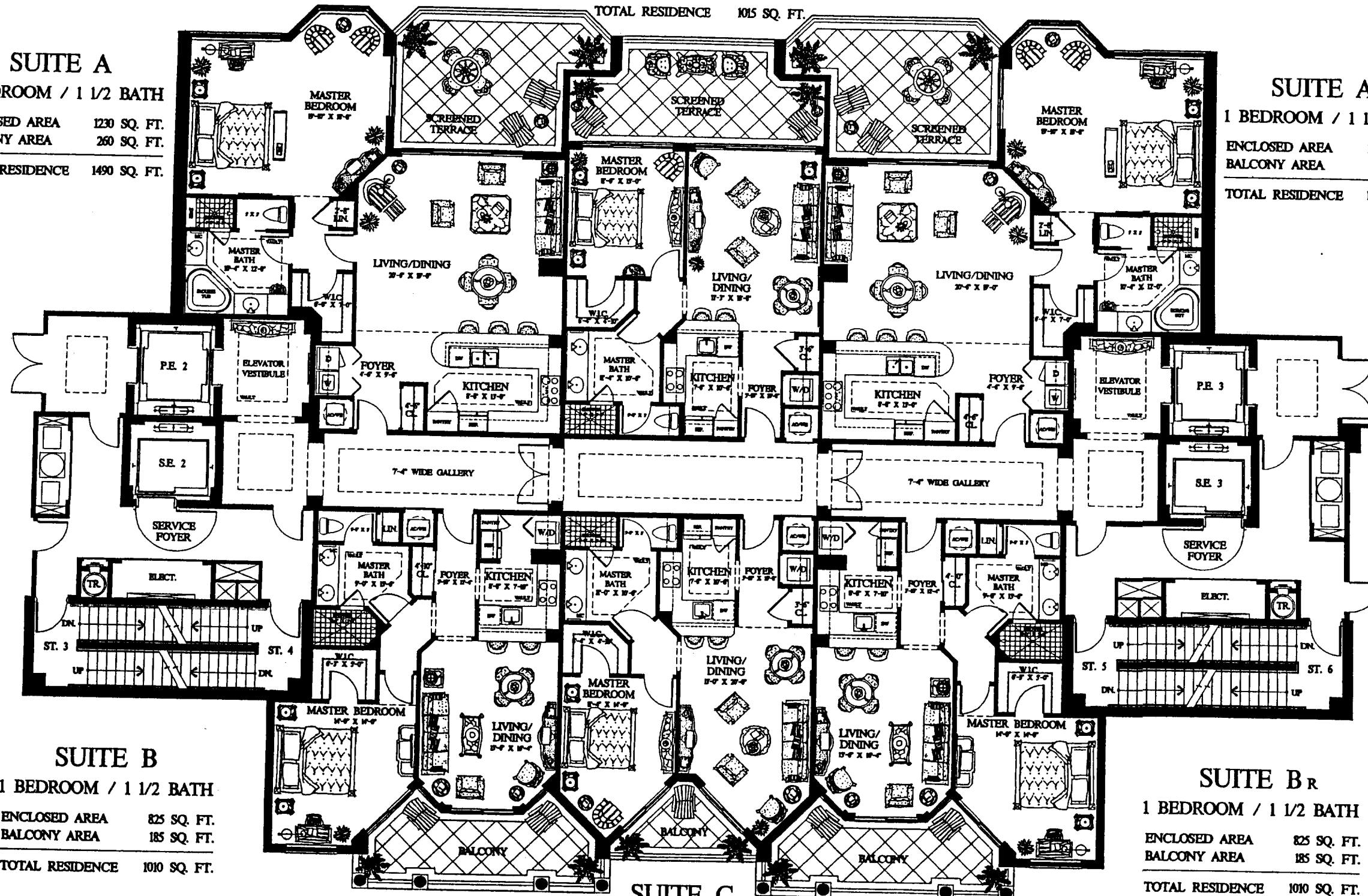


SUITE A
 1 BEDROOM / 1 1/2 BATH
 ENCLOSED AREA 1230 SQ. FT.
 BALCONY AREA 260 SQ. FT.
 TOTAL RESIDENCE 1490 SQ. FT.

SUITE D
 1 BEDROOM / 1 1/2 BATH
 ENCLOSED AREA 775 SQ. FT.
 BALCONY AREA 240 SQ. FT.
 TOTAL RESIDENCE 1015 SQ. FT.

SUITE Ar
 1 BEDROOM / 1 1/2 BATH
 ENCLOSED AREA 1230 SQ. FT.
 BALCONY AREA 260 SQ. FT.
 TOTAL RESIDENCE 1490 SQ. FT.



SUITE B
 1 BEDROOM / 1 1/2 BATH
 ENCLOSED AREA 825 SQ. FT.
 BALCONY AREA 185 SQ. FT.
 TOTAL RESIDENCE 1010 SQ. FT.

SUITE C
 1 BEDROOM / 1 BATH
 ENCLOSED AREA 765 SQ. FT.
 BALCONY AREA 75 SQ. FT.
 TOTAL RESIDENCE 840 SQ. FT.

SUITE Br
 1 BEDROOM / 1 1/2 BATH
 ENCLOSED AREA 825 SQ. FT.
 BALCONY AREA 185 SQ. FT.
 TOTAL RESIDENCE 1010 SQ. FT.

All dimensions are approximate. This floor plan is subject to change without notice. The Seller reserves the absolute right, in its sole judgment and discretion, to substitute appliances, materials, fixtures and equipment of equal or greater quality or value for those specified. The living area square footage stated includes the Private Elevator Vestibule area which is a limited common element (L.C.E.).

Oral representations cannot be relied upon as accurately stating representations of the developer. For certain representations, make reference to this brochure and to the documents required by section 718.503, Florida Statute, to be furnished by a developer to a buyer.

DATE	01-20-00
SCALE	
DWG NO.	
SHEET	

TRIESTE
 AT BAY COLONY
 COLLIER COUNTY,
 FLORIDA



ROBERT M. SWEDROE
 ARCHITECTS
 PLANNERS
 1171 LINCOLN ROAD SUITE 300 MIAMI BEACH, FL.
 A.L.A. P.A.
 PHONE 678-9002