

SUITE D

1 BEDROOM / 1 1/2 BATH

ENCLOSED AREA 75 SQ. FT.
BALCONY AREA 240 SQ. FT.

TOTAL RESIDENCE 1015 SQ. FT.

SUITE A
1 BEDROOM / 1 1/2 BATH

ENCLOSED AREA 1230 SQ. FT.
BALCONY AREA 260 SQ. FT.

TOTAL RESIDENCE 1490 SQ. FT.

SUITE A_R
1 BEDROOM / 1 1/2 BATH

ENCLOSED AREA 1230 SQ. FT.
BALCONY AREA 260 SQ. FT.

TOTAL RESIDENCE 1490 SQ. FT.

SUITE B
1 BEDROOM / 1 1/2 BATH

ENCLOSED AREA 825 SQ. FT.
BALCONY AREA 185 SQ. FT.

TOTAL RESIDENCE 1010 SQ. FT.

SUITE B_R
1 BEDROOM / 1 1/2 BATH

ENCLOSED AREA 825 SQ. FT.
BALCONY AREA 185 SQ. FT.

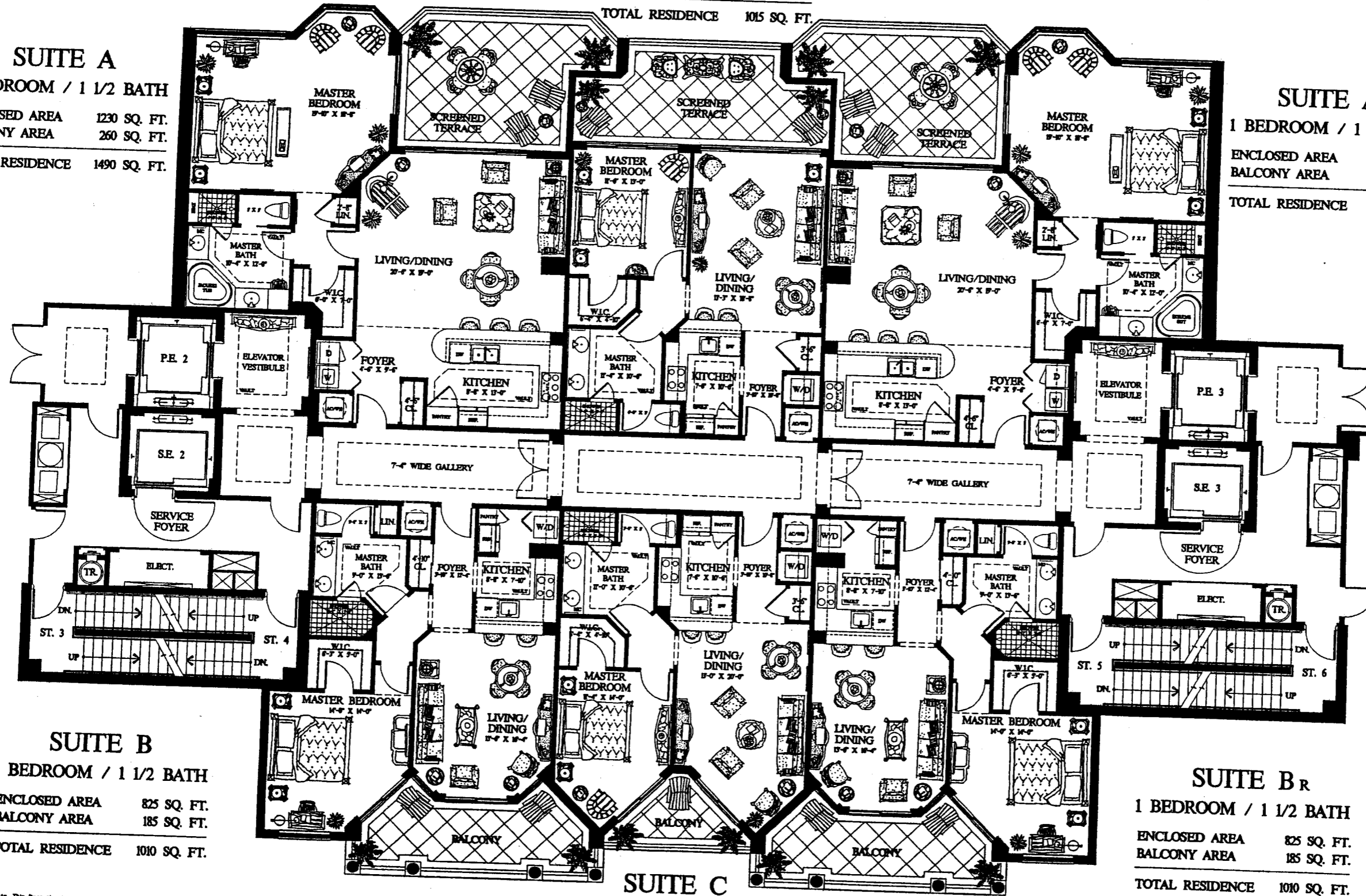
TOTAL RESIDENCE 1010 SQ. FT.

SUITE C

1 BEDROOM / 1 BATH

ENCLOSED AREA 765 SQ. FT.
BALCONY AREA 75 SQ. FT.

TOTAL RESIDENCE 840 SQ. FT.



All dimensions are approximate. This floor plan is subject to change without notice. The Seller reserves the absolute right, in its sole judgment and discretion, to substitute appliances, materials, fixtures and equipment of equal or greater quality or value for those specified. The living area square footage stated includes the Private Elevator Vestibule area which is a limited common element (L.C.E.).
Oral representations cannot be relied upon as correctly stating representations of the developer. For correct representations, make reference to the brochure and to the documents required by section 716.003, Florida Statutes, to be furnished by a developer to a buyer.

DATE	01-20-00
SCALE	
JOB NO.	
SHEET	

TRIESTE
AT BAY COLONY
COLLIER COUNTY,
FLORIDA



ROBERT M. SWEDROE
ARCHITECTS
PLANNERS
1111 LINCOLN ROAD SUITE 300
MIAMI BEACH, FL.
PHONE 673-8002
A.L.A. P.A.