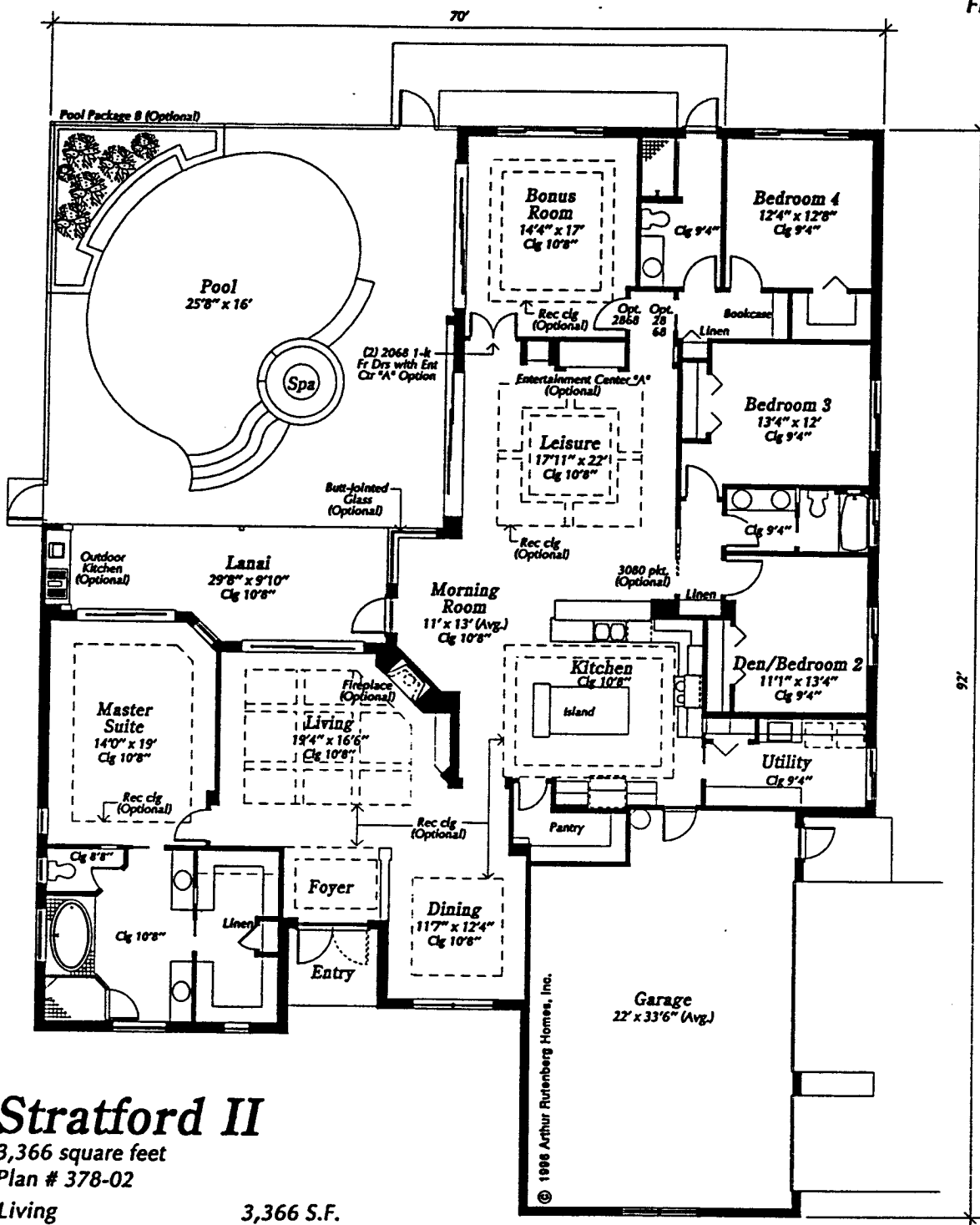


Stratford II 378-02

Floor Plan



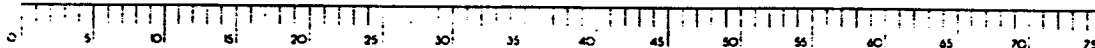
Stratford II

3,366 square feet
Plan # 378-02

Living	3,366 S.F.
Lanai	250 S.F.
Garage	745 S.F.
Entry	50 S.F.
Total	4,411 S.F.

Plans and specifications subject to change without notice. Certain items such as the pool, fireplace or roof tie shown may be optional. Reference should be made to the applicable specifications.

MEASUREMENT IN FEET



May 16, 1997