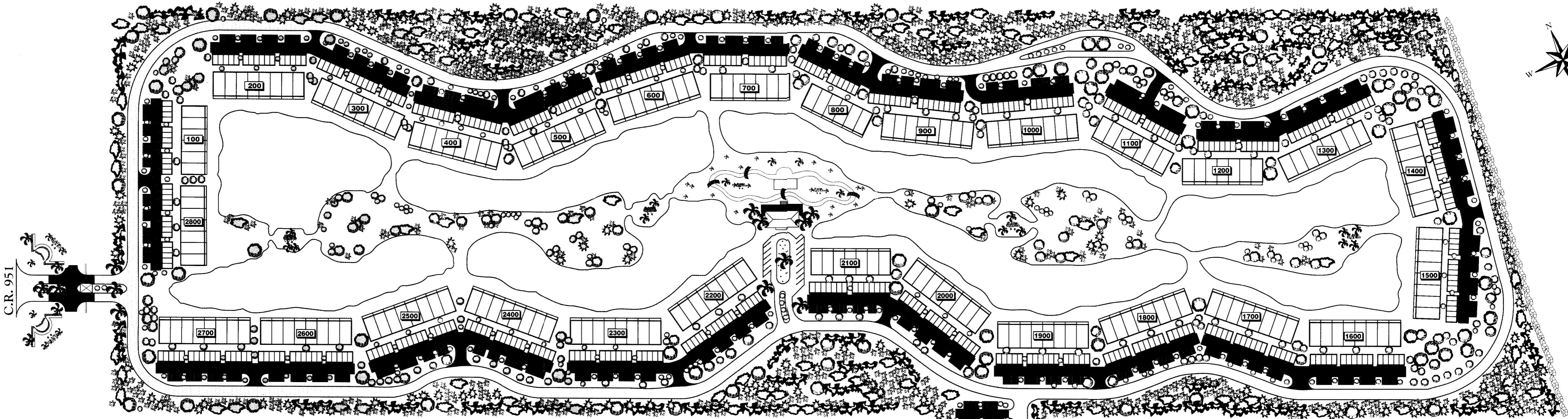
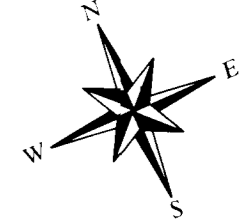


Site Plan



Site plan is an artist's conception and is not necessarily to scale.
Dimensions and specifications are approximate and subject to change without notice.

The developers of Falling Waters are proud to present a new development of unsurpassed quality, excellence, and beauty.

The Falling Waters Beach Resort is that development. Envision yourself drifting along the 600 foot lazy river pool or maybe practicing on the 18 hole putting green.

As another distinctive Falling Waters community, you will be greeted by spectacular waterfalls while driving through a 24 hour gated entry which has been designed to ensure the character of the community.

As you will see, our Sandhill model is as spacious as it is elegant. Our standard features provide you with high quality products from only the very best manufactures, complete appliance packages including washer and dryer, high efficiency air conditioners, to name a few. You will be treated to standard and optional products that make living more enjoyable, comfortable and convenient.

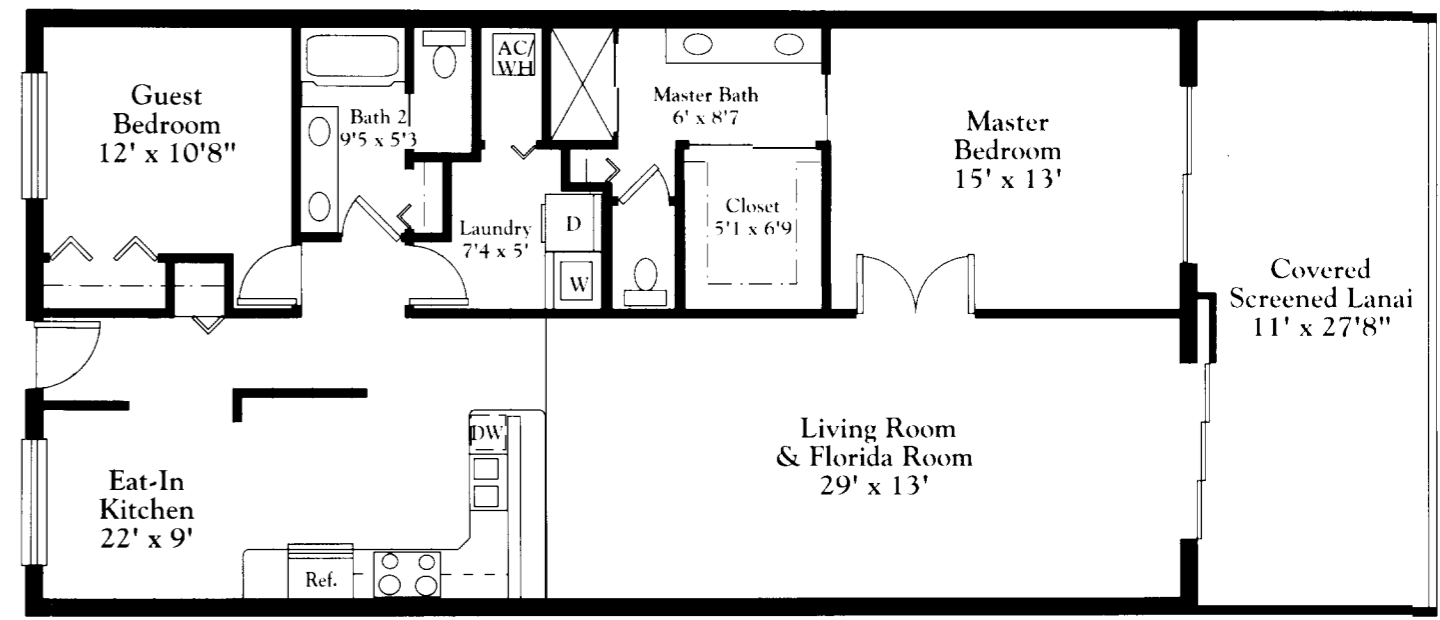
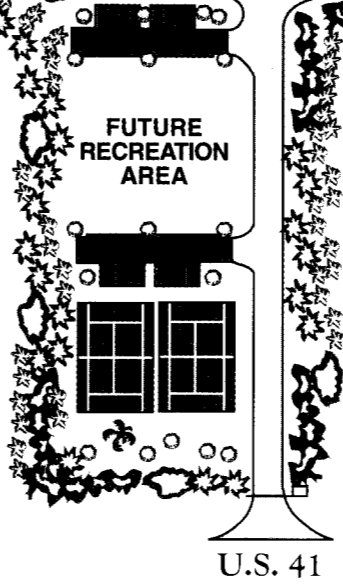
The developers and staff of Falling Waters Beach Resort are here to assist you while you are considering the purchase of your new home. Feel free to contact our office at anytime.

SANDHILL

Two Bedroom, Two Bathroom

SQUARE FOOTAGE	
Living Area	1,351
Lanai	304
Garage	288
TOTAL	1,943

Private Garage
In Front
Of Each Unit
24' x 12'



ORAL REPRESENTATIONS CANNOT BE RELIED UPON AS CORRECTLY STATING REPRESENTATIONS OF THE DEVELOPER. FOR CORRECT REPRESENTATIONS, MAKE REFERENCE TO THIS BROCHURE AND TO THE DOCUMENTS REQUIRED BY SECTION 718.503, FLORIDA STATUTES, TO BE FURNISHED BY THE DEVELOPER TO A BUYER OR LESSEE.