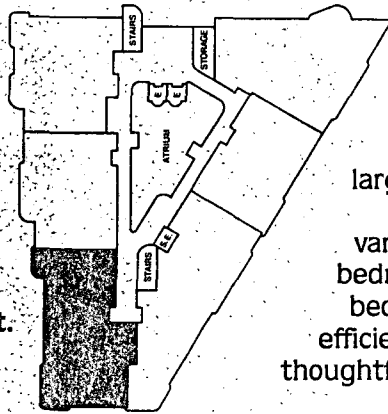


Residence Seven

Enclosed area: 2100 sq. ft.
 Balcony area: 365 sq. ft.
 Total area: 2465 sq. ft.



One balcony for entertaining and a second for your house guests' private enjoyment are what give this three bedroom, three bath home its special style. And whether you step out from either of two bedrooms, or from the large L-shaped living/dining room, the view of the Gulf is the same—spectacular. A double bowl vanity area and two walk-in closets in the master bedroom suite, a third walk-in closet in the second bedroom, and a cozy breakfast area adjoining the efficient contemporary kitchen further enhance the thoughtful elegance of this well-planned design.

