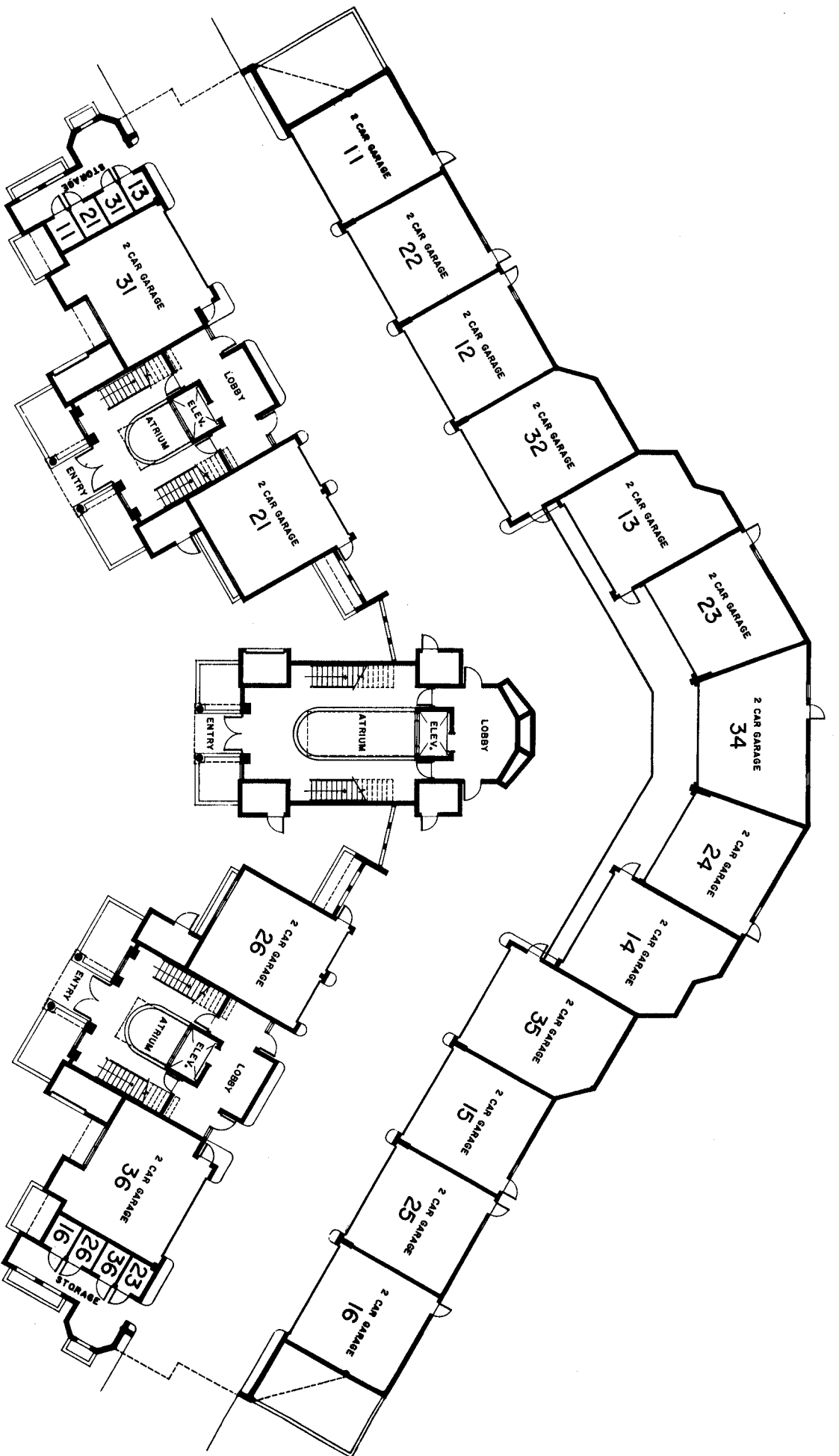


Rarely does a master planned community attract such admiration and accolades as does Pelican Bay. Westinghouse Communities of Naples, Inc. is the developer of Pelican Bay. They have taken great care in creating an exquisite community that offers a superior quality of life in a natural and beautiful environment. Pelican Bay lies along 3 miles of pristine white sand beach. There are 570 acres of natural preserves; estuarine bay systems and mangrove forests, all abundant with native wildlife and breathtaking scenery. A private tram meanders along an elevated boardwalk through an unspoiled preserve to the Gulf of Mexico, where residents not only enjoy the warmth of the Naples sun and the Gulf's emerald waters, but also the charm of the open-air Sand Bar restaurant.

Arthur Hill's championship golf course at Pelican Bay is both charming and beautiful. Rolling fairways, multi-tiered greens, glistening lakes, an array of pines, palmettos and lakes distinguish this course as one of the most magnificent golf courses in Florida. You will use every club in your bag when you play The Club at Pelican Bay.

Pelican Bay features Har-Tru tennis courts and cement courts for the tennis enthusiasts, and throughout the community are bicycle and jogging paths. Pelican Bay is also home to the Philharmonic Center for the Arts which features world class musicians, entertainers, outstanding theatrical productions and includes two art galleries.

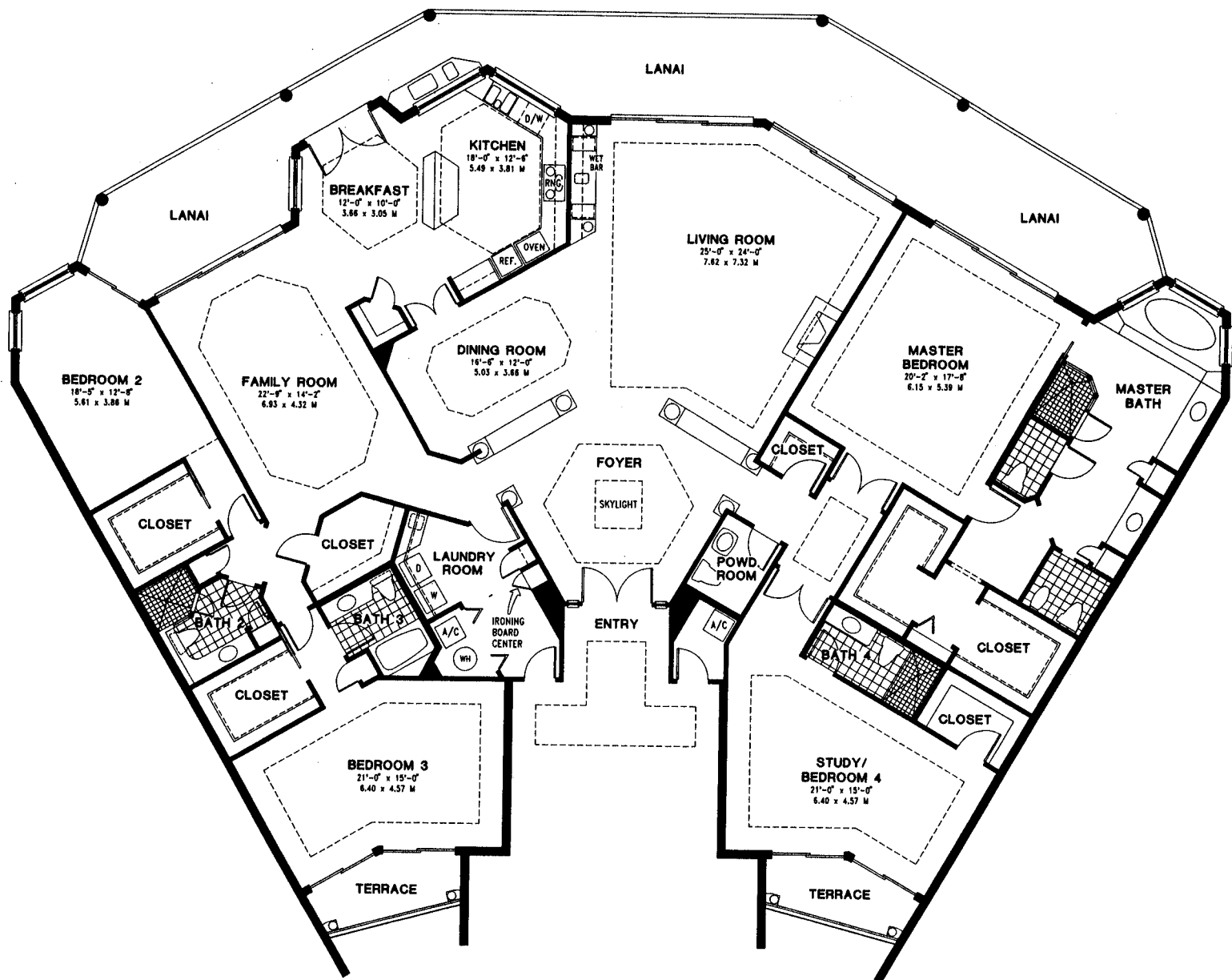




MIDRISE GARAGE FLOOR PLAN



8400 Pelican Bay Blvd. • Naples, FL 33963 • 941-598-1615 • Fax: 941-598-1916



THE PENTHOUSE

Living Area	4,480 Sq. Ft.	416.21 Sq. M.
Lanai & Terrace	942 Sq. Ft.	87.51 Sq. M.
A/C Room	78 Sq. Ft.	7.25 Sq. M.
TOTAL FLOOR AREA	5,500 Sq. Ft.	510.97 Sq. M.

All dimensions are approximate and subject to change without notice.