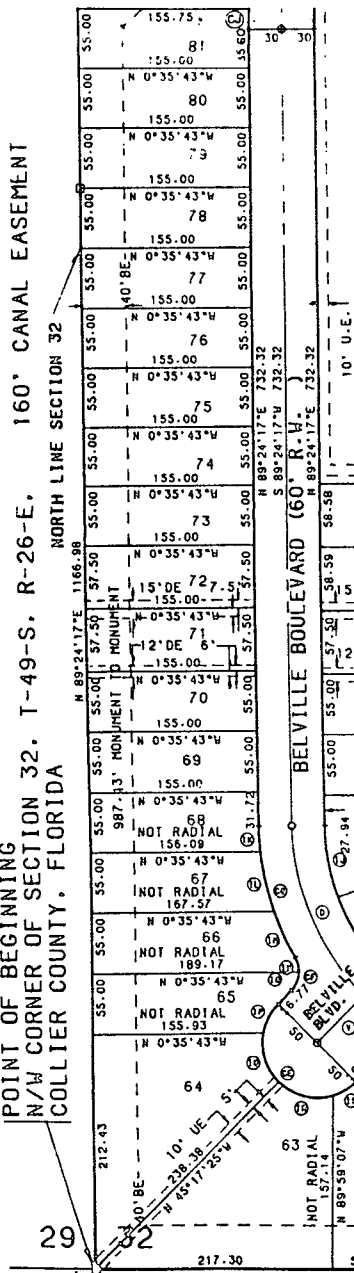
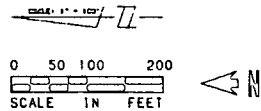


POINT OF BEGINNING
N/W CORNER OF SECTION 32, T-49-S, R-26-E,
COLLIER COUNTY, FLORIDA



SITE PLAN

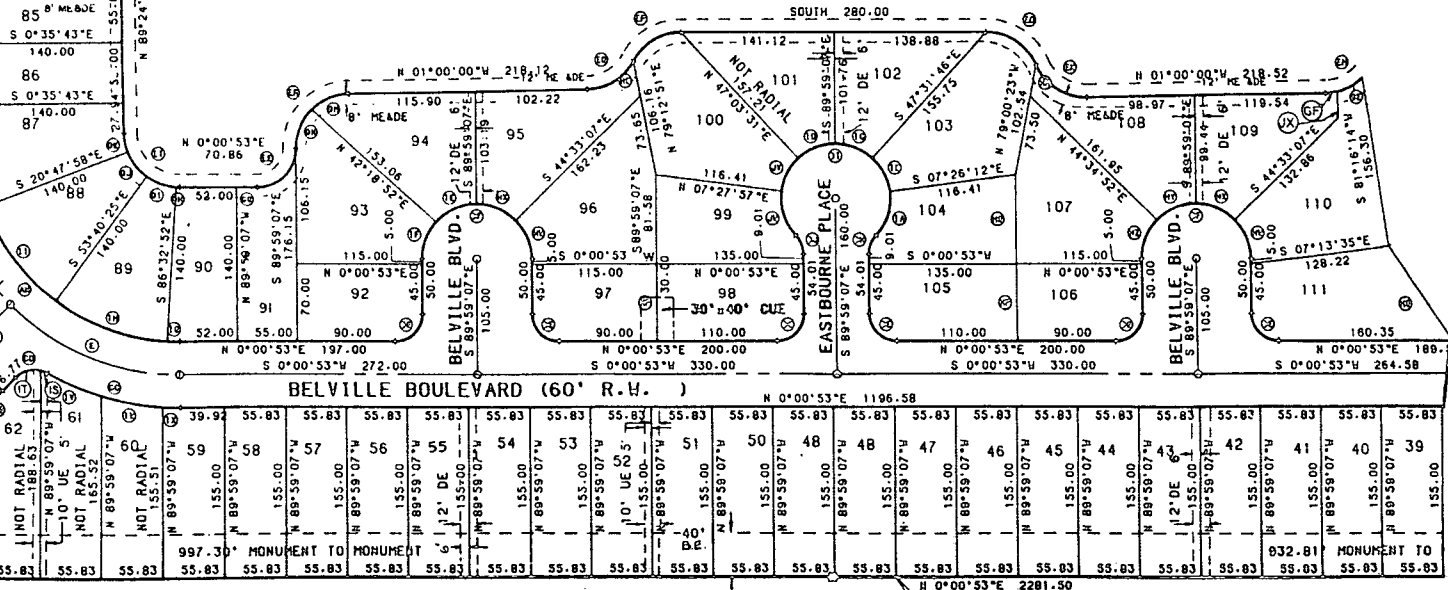


BELVILLE BOULEVARD (60' R.H.)

BELVILLE BLVD.

BELVILLE BOULEVARD (60' R.H.)

14.3 ACRE LAKE



ST. CLAIR SHORES
(NOT RECORDED)

WEST LINE OF THE NORTHWEST 1/4 SECTION 32,
TOWNSHIP 49 SOUTH, RANGE 26 EAST, COLLIER COUNTY, FLORIDA