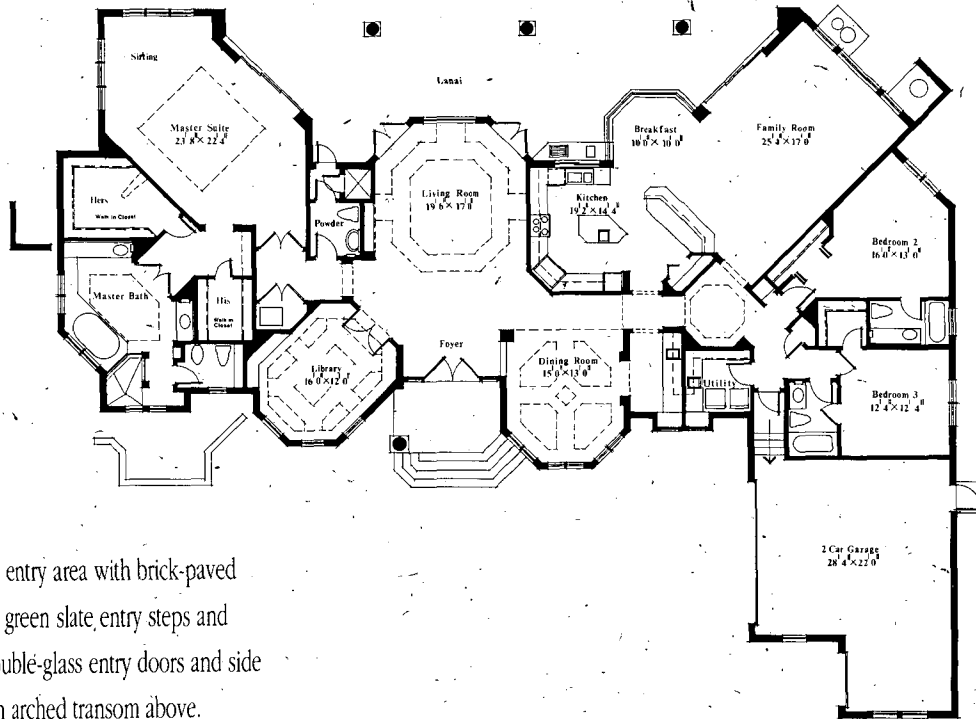


# London Bay Homes



- Outside entry area with brick-paved driveway, green slate entry steps and loggia, double-glass entry doors and side lights with arched transom above.

- Living area with detailed coffered ceiling, built-in art niche, cove lighting, double French doors for access to lanai and large picture window for views of pool and golf course.

- Kitchen with center-island cooktop, custom-designed wood cabinets, tile and Corian™ countertops and breakfast bar/wet bar to service family room.

- Family room with fireplace and built-in entertainment center, pocketed sliding doors for access to pool, and large picture window for views of fairway and green.

- Dining room with detailed coffered ceiling accented with pecked cypress. Arched opening to Butler's pantry.

- Library with built-in bookshelves and computer center, double-entry doors and detailed coffered ceiling.

- Large master suite with sitting area, detailed bed wall with pilasters and arch, pocketed sliding glass doors for access to lanai and pool. His and hers walk-in closets with drop-down ironing board in hers.

- Master bath with Jacuzzi™ tub, tiled step-down shower, Italian marble floor, Corian™ countertops and tub deck, and premium Jacuzzi™ faucets and fixtures.

- Two guest suites, one with view of golf course. Both have private baths with Jacuzzi™ faucets.

- Architecturally designed swimming pool and spa with cascading water feature, covered lanai with summer kitchen, extensive landscaping and sprinkler system.