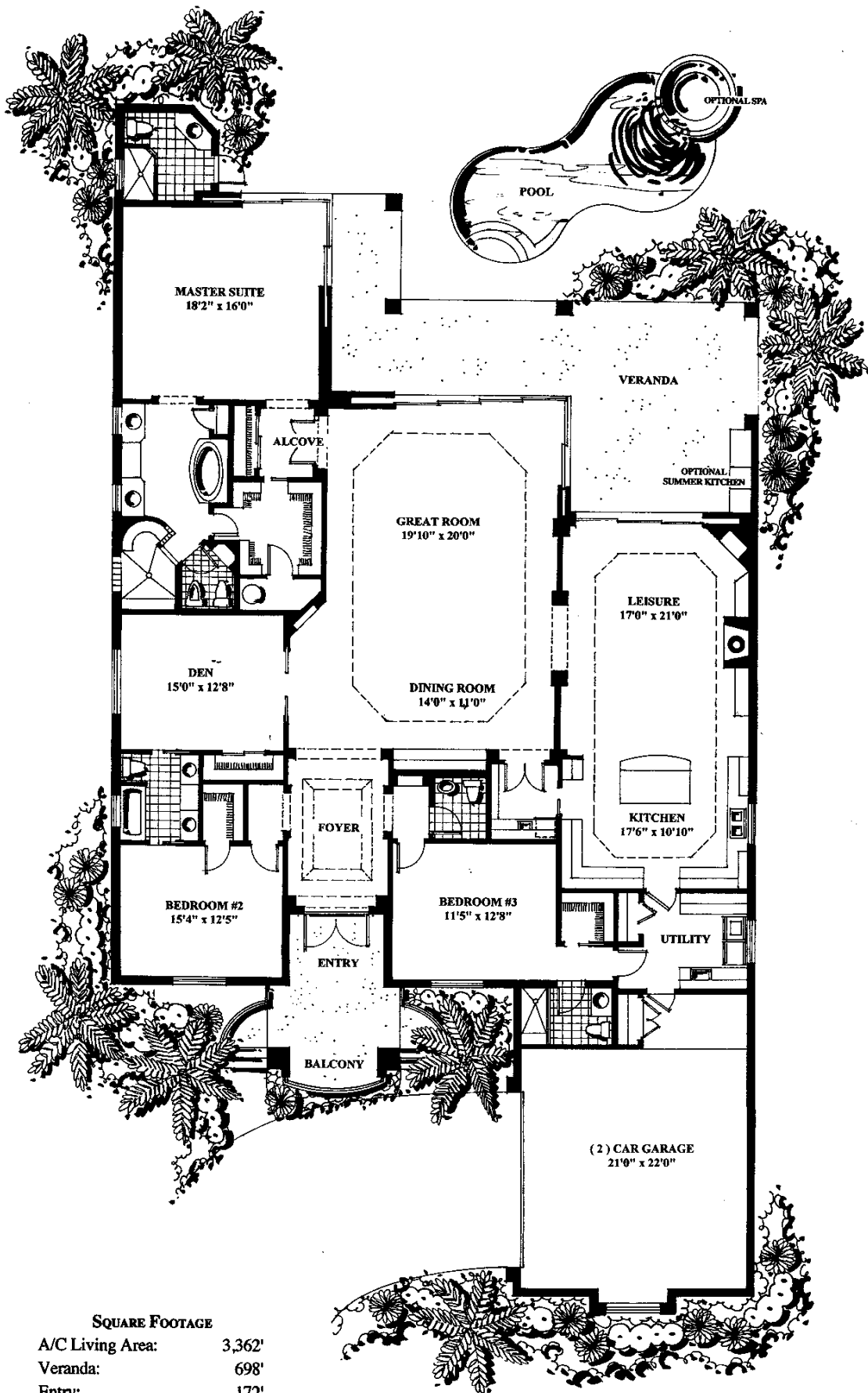


GREAT ROOM HOME



The Mews
AT GREY OAKS



SQUARE FOOTAGE	
A/C Living Area:	3,362'
Veranda:	698'
Entry:	172'
Garage:	528'
TOTAL:	4,760'

Dimensions approximate. Information herein believed to be accurate but not warranted.

Developed by Country Homes of Collier County, Inc. Marketed exclusively by Grey Oaks Realty, Inc.