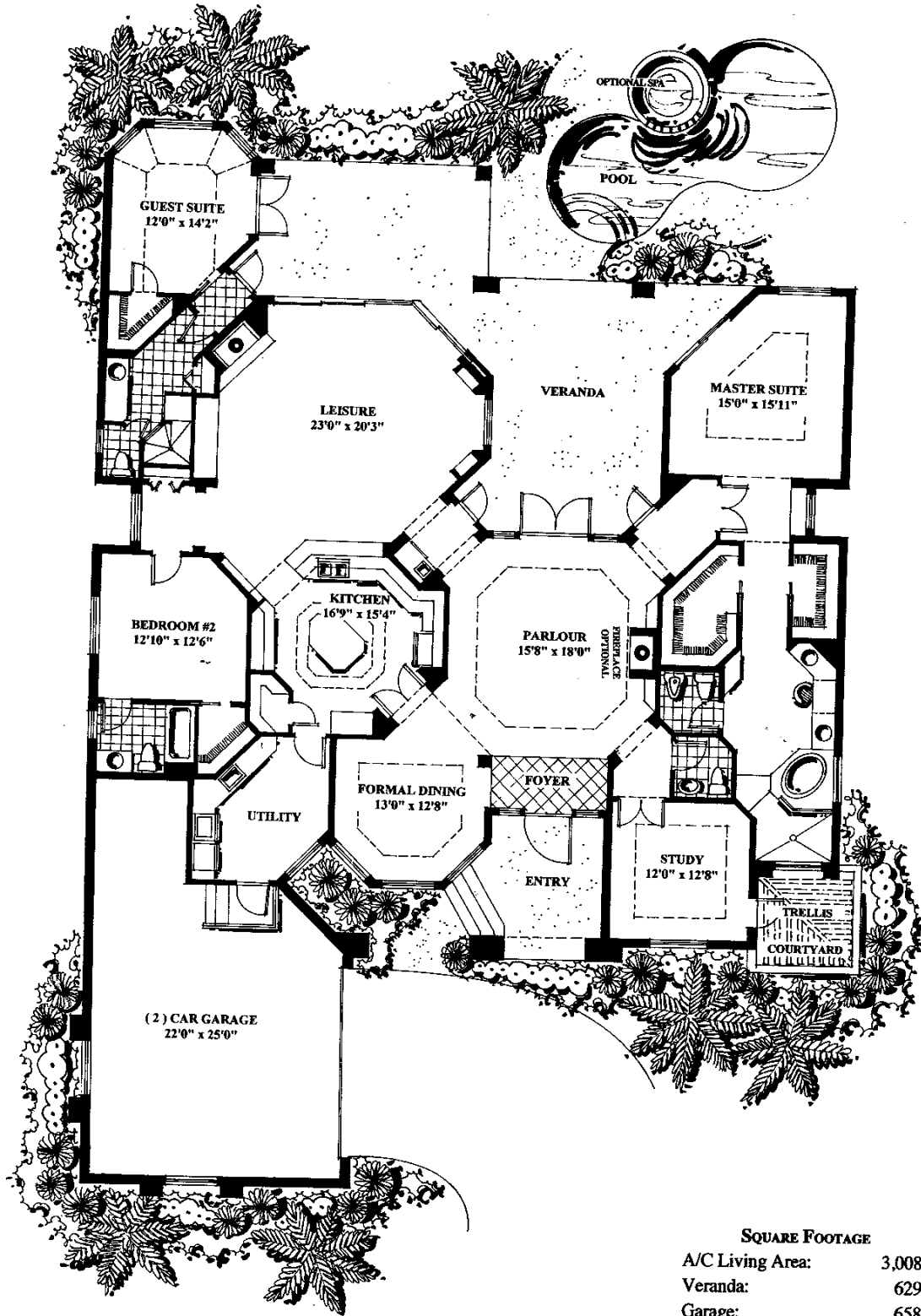


# GRAND PARLOUR HOME

---



The Mews  
AT GREY OAKS



SQUARE FOOTAGE	
A/C Living Area:	3,008'
Veranda:	629'
Garage:	658'
Entry:	188'
<b>TOTAL:</b>	<b>4,483'</b>

Dimensions approximate. Information herein believed to be accurate but not warranted.

Developed by Country Homes of Collier County, Inc.  
Marketed exclusively by Grey Oaks Realty, Inc.