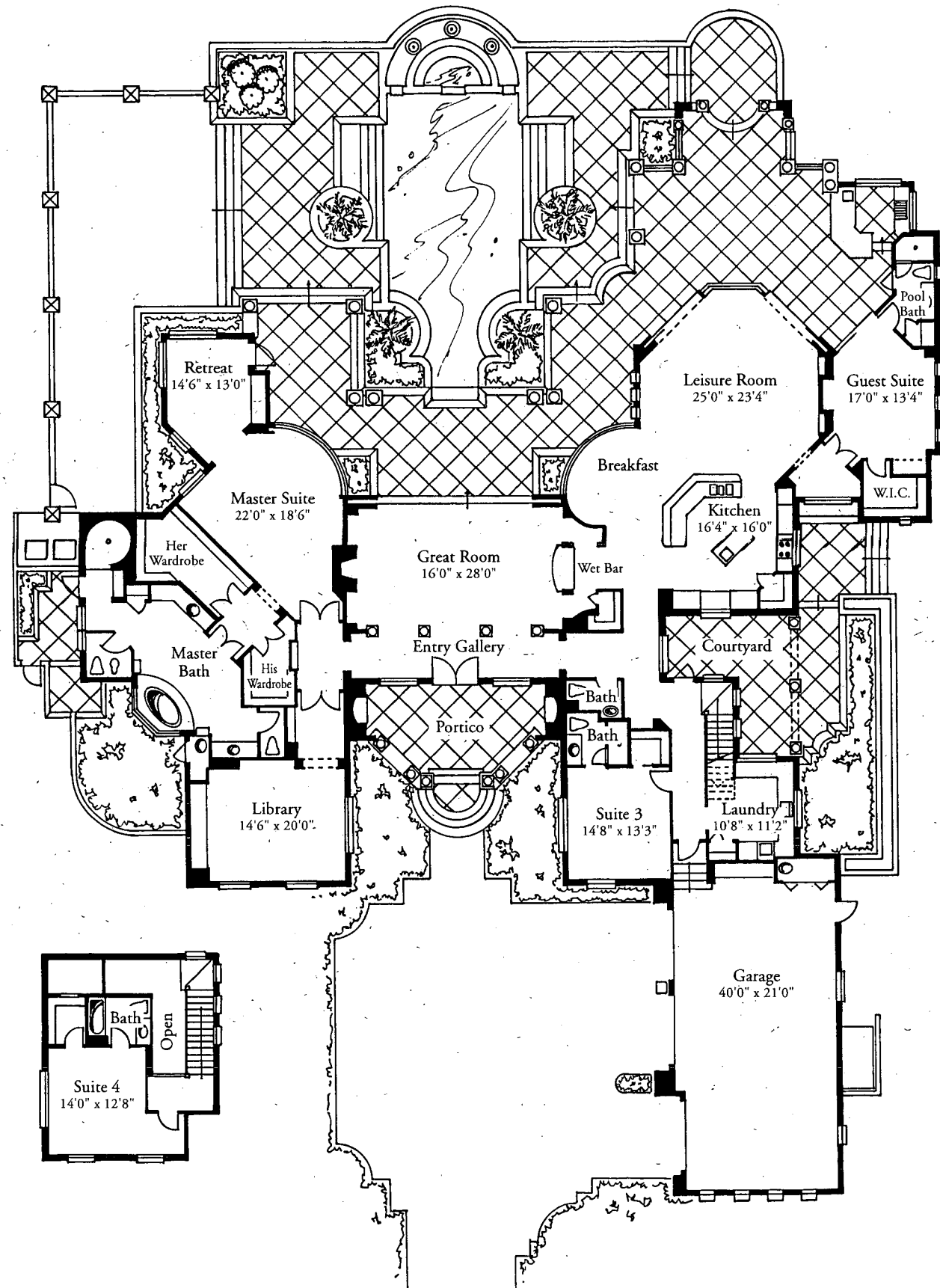


# FREY & SON



## Home Features

- Arched Entry Portico Lavishly Detailed with Keystone Columns and Cladding on Arches and Window Surrounds
- Living Room and Dining Room Combined into One Large Seamless Space with Soaring Ceilings
- Custom Moldings and Intricate Ceiling Details in Nearly Every Room
- Leisure Room Features Wall of Glass behind Built-In Television, Flanked by Two Large Sliding Doors that Pocket to the Side
- Beige-Colored Stone Flooring Flows from Entry Foyer to Guest Hallways and into Kitchen, Breakfast Area and Leisure Room
- Professional Series Appliances including Dacor Gas Cooktop, Sub Zero Refrigerator, Asko Dishwasher and Dacor Oven
- Lavish Outdoor Kitchen includes Cypress Cabinets, Gas Grille, Under-Counter Refrigerator, Granite Tops and Sliding Glass Window
- Master Bath Contains Private Her Water Closet and Bidet, and Separate His Water Closet
- Marbled Tub Overlooks Large Privacy Garden through Expansive Fixed Glass, Framed by Keystone Columns

## Home Dimensions

First Floor A/C: ..... 4,782 sq. ft.  
 Second Floor A/C: ..... 385 sq. ft.  
 Total A/C Area: ..... 5,167 sq. ft.  


---

 Total Area under Roof: ... 8,371 sq. ft.