

EGRET'S WALK AT PELICAN MARSH

For more than a decade, the developers of Egret's Walk At Pelican Marsh have been creating residential masterpieces at outstanding values. Egret's Walk, the first multi-family community within Pelican Marsh, is certain to be the next chapter in this success story of record sales and rapid sell-outs.

Egret's Walk will total 204 garden residences on a 28.3 acre parcel located in the southwest corner of Pelican Marsh. The gated community will surround three man-made lakes accentuated by four aquascapes and lush tropical landscaping.

With Mediterranean influenced architecture, Egret's Walk At Pelican Marsh offers four floorplans in two types of two-story buildings.

The amenities within Egret's Walk include a clubhouse complete with furnished social room with television, juice bar with sink and refrigerator, sauna, exercise room, massage room and fitness coordinator's office. A heated spa and two large swimming pools with sundecks offer residents the opportunity to relax or socialize with other residents.

SITE PLAN

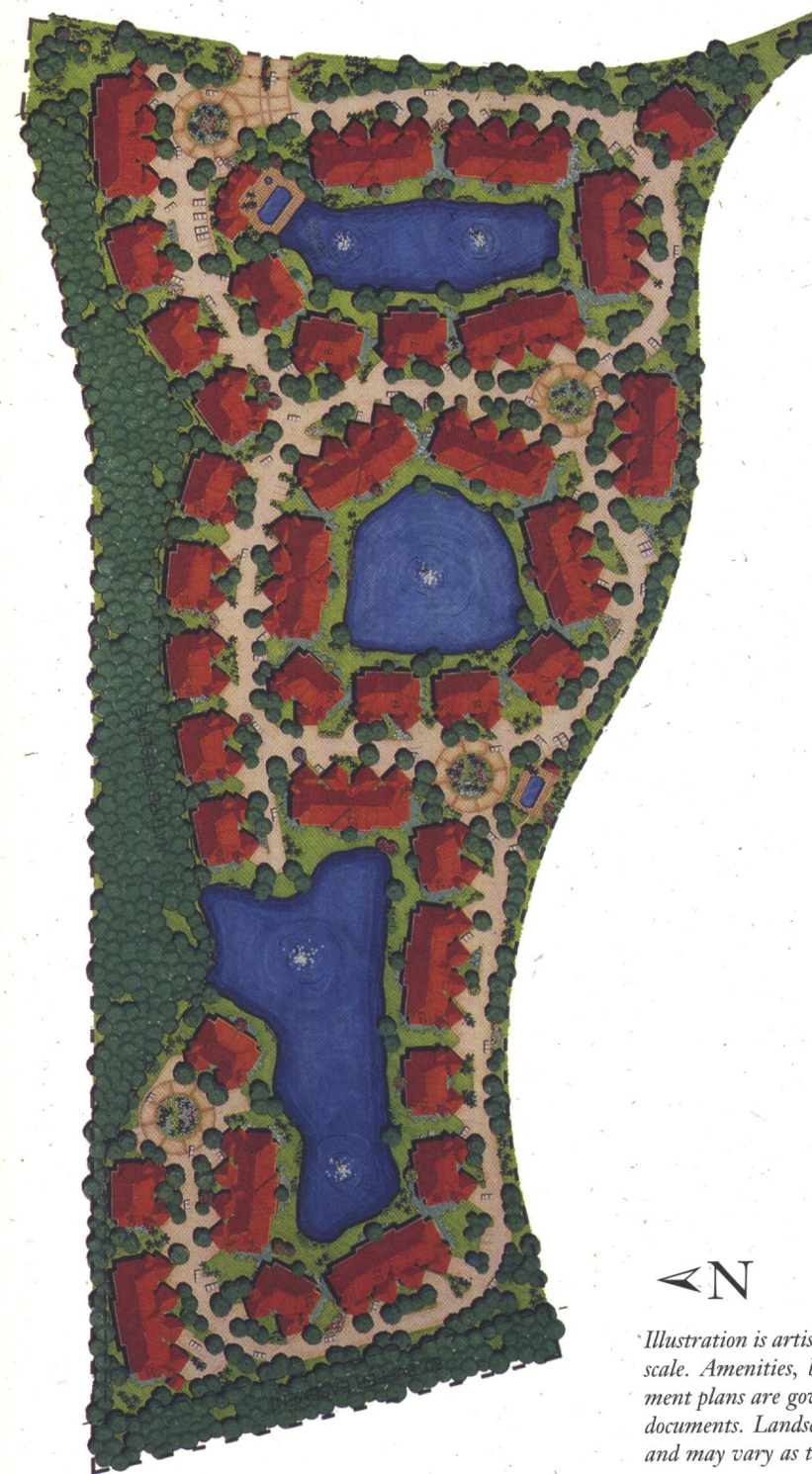


Illustration is artist's depiction only and not to scale. Amenities, building type and development plans are governed by the condominium documents. Landscaping depicted not to scale and may vary as to maturity and number.