

LLY TAKE THE LEAD

SH MULTI-FAMILY COMMUNITY

For more than a decade, the developers of Egret's Walk at Pelican Marsh have been creating residential masterpieces at outstanding values. Egret's Walk, the first multi-family community within Pelican Marsh, is certain to be the next chapter in this success story of record sales and rapid sell-outs. Situated on a 28.3 acre parcel in the southwest corner of Pelican Marsh, Egret's Walk will total 208 garden residences when complete.

This gated community will surround three man-made lakes accentuated by three cascading fountains and lush tropical landscaping.

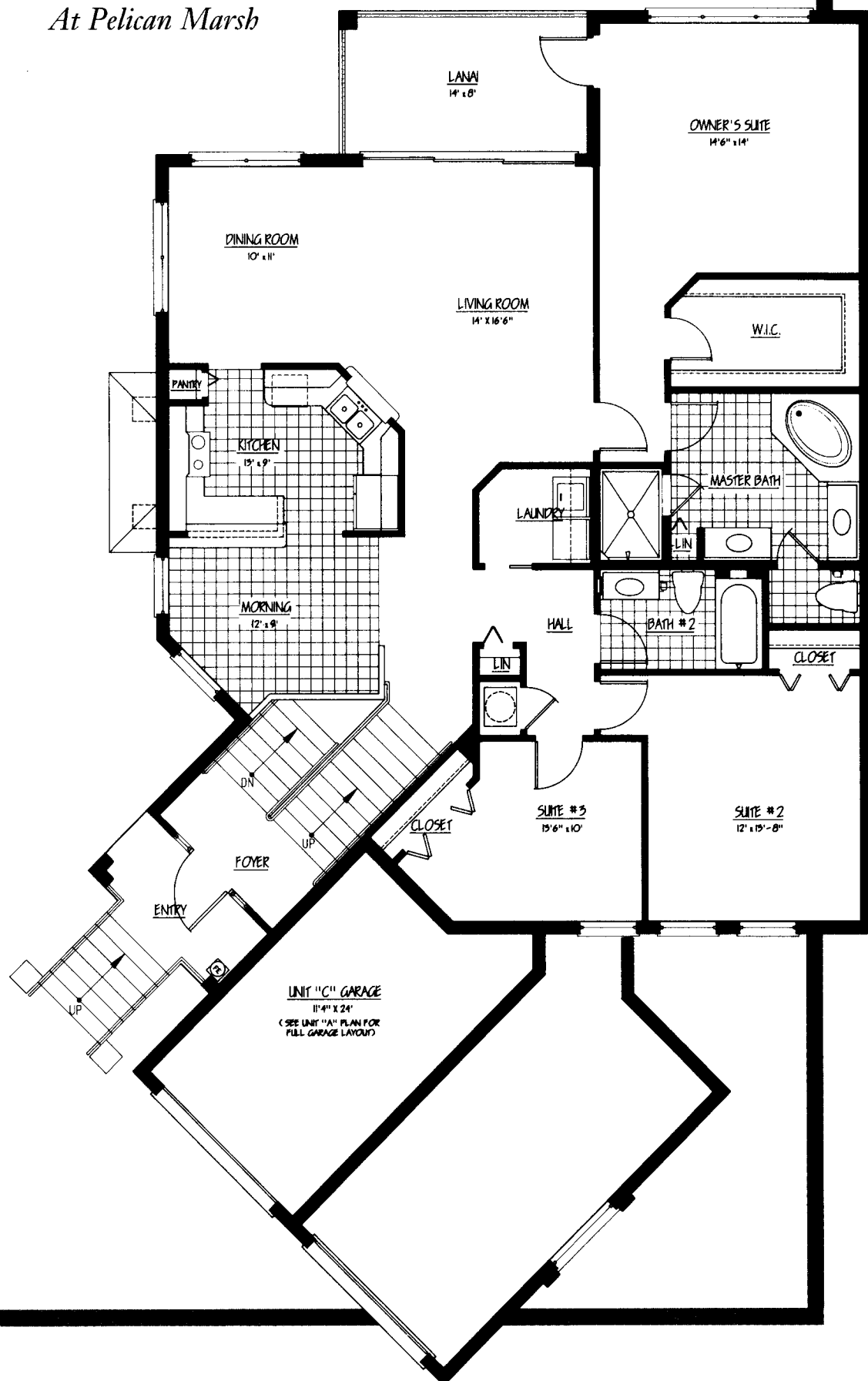
The amenities within Egret's Walk include a clubhouse complete with furnished social room with television, juice bar with sink and refrigerator, saunas, exercise room, massage room and resident manager's quarters. A heated spa and two large swimming pools with sundecks offer residents the opportunity to relax or socialize with other residents.

With Mediterranean influenced architecture, Egret's Walk offers four floorplans in two types of two-story buildings, starting from the mid \$100's.



EGRET'S WALK At Pelican Marsh

Scan
& Scan last pg.
and middle pg.



At Right, Residence "C", a second floor residence featuring 1,800 square feet of living space, a 112 square foot lanai and 290 square foot garage. Residence "C" is one of four floorplans available at Egret's Walk.

Egret's Walk is being developed by Signature Communities, Inc. and Royal Palm Builders, Inc. and is located at 992 Pelican Marsh Boulevard, (813)598-9500